

NGA Center for Best Practices

Employment for People with Psychiatric Disabilities

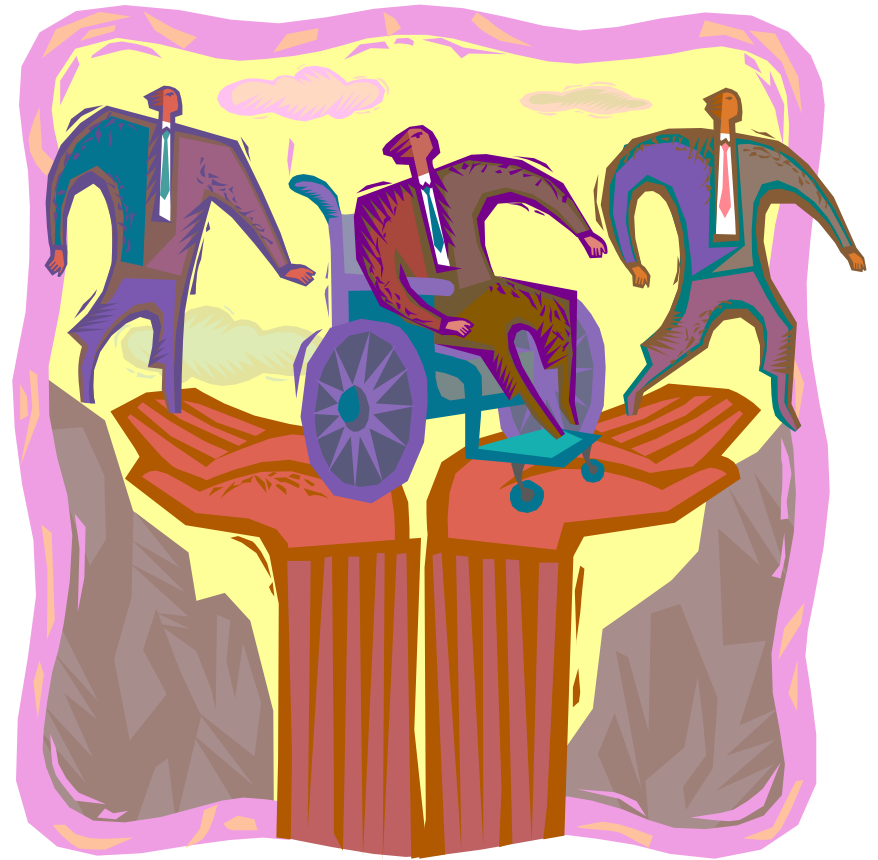
Public Vocational Rehabilitation (VR)

- Mission – to enable persons with disabilities to achieve employment, economic self-sufficiency and independence
- Located in all 50 states, District of Columbia and the territories



Public Vocational Rehabilitation (VR)

- Nationally serves over 1,000,000 people each year
- Of these, 205,791 achieved employment
- Persons with psychiatric disabilities represent a large and growing segment of public VR's consumer base



What Public VR Does



- Provides coordinated and comprehensive services as determined in Individualized Plans for Employment (IPE) that lead to integrated, community-based employment
- Provides a combination of workforce services and specialized disability services

What Public VR Does



- ❑ Provides extensive case management and service coordination services
- ❑ Creates strong linkages with the business community (dual customers)



VR Provides Diverse Approaches

Evidence-Based Supported Employment

- Maryland one of 10 states in Dartmouth, Johnson and Johnson national project
- Tremendous leadership technical assistance and support by Dartmouth, JNJ, University of Maryland Medical System
- Tremendous leadership and commitment by the State Mental Health agency to the vision, the philosophy, fidelity to the service design, and to making certain resources supported the transformed system



VR Provides Diverse Approaches

Evidence-Based Supported Employment

- Strong non-profit, community provider support and leadership in the state roll-out
- Strong and consistent shared leadership by the staff of the VR program to make the system “work for the consumer”

Diversity of Approaches

Traditional VR Service Delivery

- Combination of linkages to and with the workforce system in the state (colleges, proprietary trainers, non-profits, one-stops)
- Structure and provide the supports that an individual with a psychiatric disability needs to prepare for, enter and be successful in the workplace (determined individually)
- Time-limited service intervention with easy access back into service when necessary

Diversity of Approaches



The State's One-Stop Centers

- Core, intensive, and training services
- Community marketplace for job seekers and employers
- VR is an active partner in the one-stop system; partners each bring a set of strengths and capacities for providing best-in-class services

Diversity of Approaches

Self-Employment

- Understanding what self-employment is and what it entails
- Market survey to identify small business opportunities
- Business Plan Development; reviewed in an interactive way with a business advisory team (business and financial people)



Diversity of Approaches

Self-Employment

- Start-up equity
- Technical assistance and follow along



Financing



- ❑ Public VR is funded by a formula grant to each state; the funding must be matched on a 78.7% federal to 21.3% state funding ratio.
- ❑ Nationally, Section 110 of the Rehabilitation Act provides \$2.8 billion for public VR services; Maryland receives \$39 million.
- ❑ Public Mental Health agency that funds the long-term support services for persons in EBSE uses a combination of Medicaid and state general dollars.

Why Employment for Persons with Significant Mental Illness

- Work is healthy
- Work is expected
- Work is empowering



Why Employment for Persons with Significant Mental Illness

- Real business and workforce needs that can be addressed effectively by persons with significant mental illness
- Strong return on investment; VR consumers earned \$3.6 billion in wages in their first year of work; paid \$331 million in federal taxes, \$97 million in state income tax and \$537 million in Social Security and Medicare; ROI compounds every year the individual works



VR is an investment in people

