



U.S. Department of Labor

FBCOs in Reentry at DOL

***Learning to Leverage the Good Work of
FBCOs***

PRESENTER:

Scott Shortenhaus

Center for Faith-Based and Community Initiatives

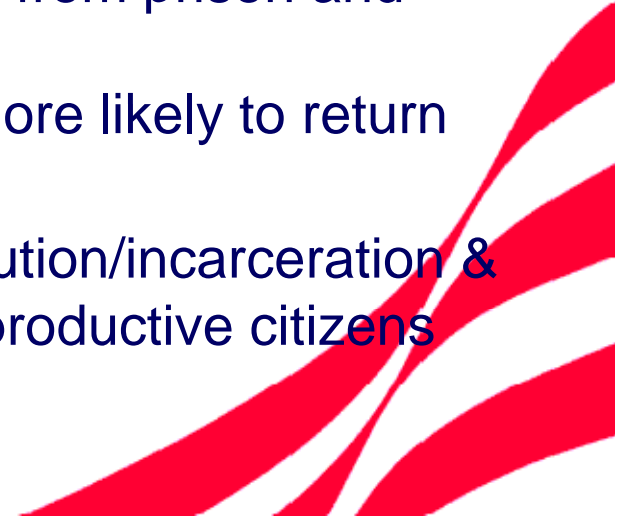
U.S. Department of Labor





Background

- Each year more than 650,000 inmates are released from Federal and State prisons and return to their families and communities
- 95% of the 2.1 million prison inmates now in prison will be released
- Without intervention, over two-thirds of returning inmates will be rearrested within three years of their release from prison and two out of five will be reincarcerated
- An unemployed ex-offender is three times more likely to return to prison than an employed ex-offender
- Cost to community two fold – cost of prosecution/incarceration & opportunity cost of not having offenders as productive citizens





Statistics on Employment and Recidivism

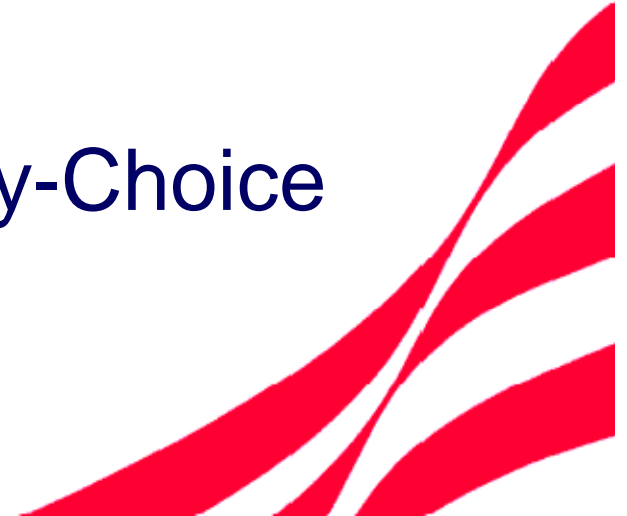
- Released prisoners face myriad challenges that contribute to their return to criminal activity, re-arrest and re-incarceration.
- Data from 1997 show that nearly one-third of adult prisoners were unemployed in the month prior to their arrest—compared with 7 percent unemployment in the general population.
- Prisoners also demonstrate low levels of educational attainment—some 40 percent of adult state prisoners are functionally illiterate and more than half of state parole entrants have not graduated from high school.





DOL Reentry through FBCOs

- **Employment Driven**
 - Training
 - Placement
 - Retention
 - Employer Focus Group
- **Mentoring is a Focus**
- **Ready4Work, PRI, Beneficiary-Choice**
- **Results-Focused**





Strengths of FBCOs

- Established and trusted presence in community with many connections to employers and other service providers
- Compassionate vision and “human capital” to provide holistic services to returnees – leveraging volunteers
- Flexibility
- Many provide a variety of social services such as: mentoring, soft skills training, technical skills training, job placement and retention, case management, language training, housing, substance abuse treatment, basic needs, etc.





Ready4Work

- Created in 2003, R4W was a 3-yr, \$25M reentry demonstration program run through FBCOs.
- Jointly funded through DOL, DOJ and P/PV.
- 11 sites serving adults (18-35), 6 sites serving juveniles (14-18).
- Services ended August, 2006.
- Adult sites are in the following cities: Memphis, New York, Jacksonville, Houston, Milwaukee, Detroit, Oakland, L.A., Chicago, Philadelphia, Washington DC





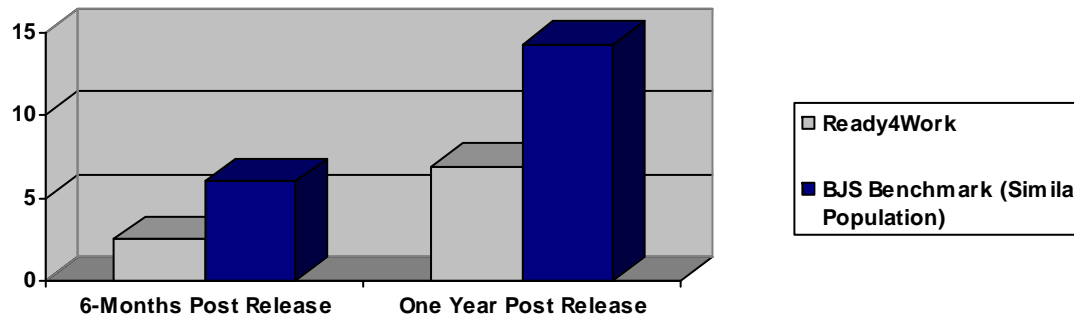
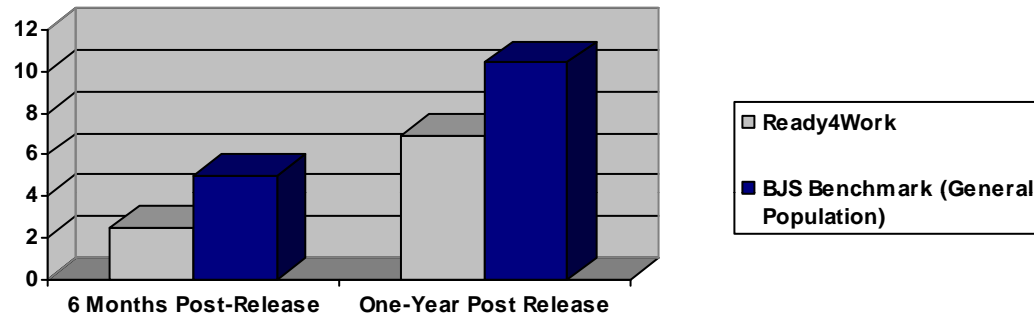
Ready4Work Results

- 4,482 participants served
- 97% case managed
- 63% mentored
- 86% in job training classes
- 2,543 (57%) have been employed, and 63% of this total retained their job for 3 consecutive months
- Average cost: \$4,500/participant
- 6-month recidivism: 2.5%, 1-year recidivism: 6.9%





Ready4Work Recidivism Results





Effect of Mentoring on Employment

In R4W, mentored participants:

- Remained in the program longer
- Twice as likely to obtain a job
- Increased the odds of getting a job by 73% the next month
- Increased the odds of retaining employment by 56%





PRI

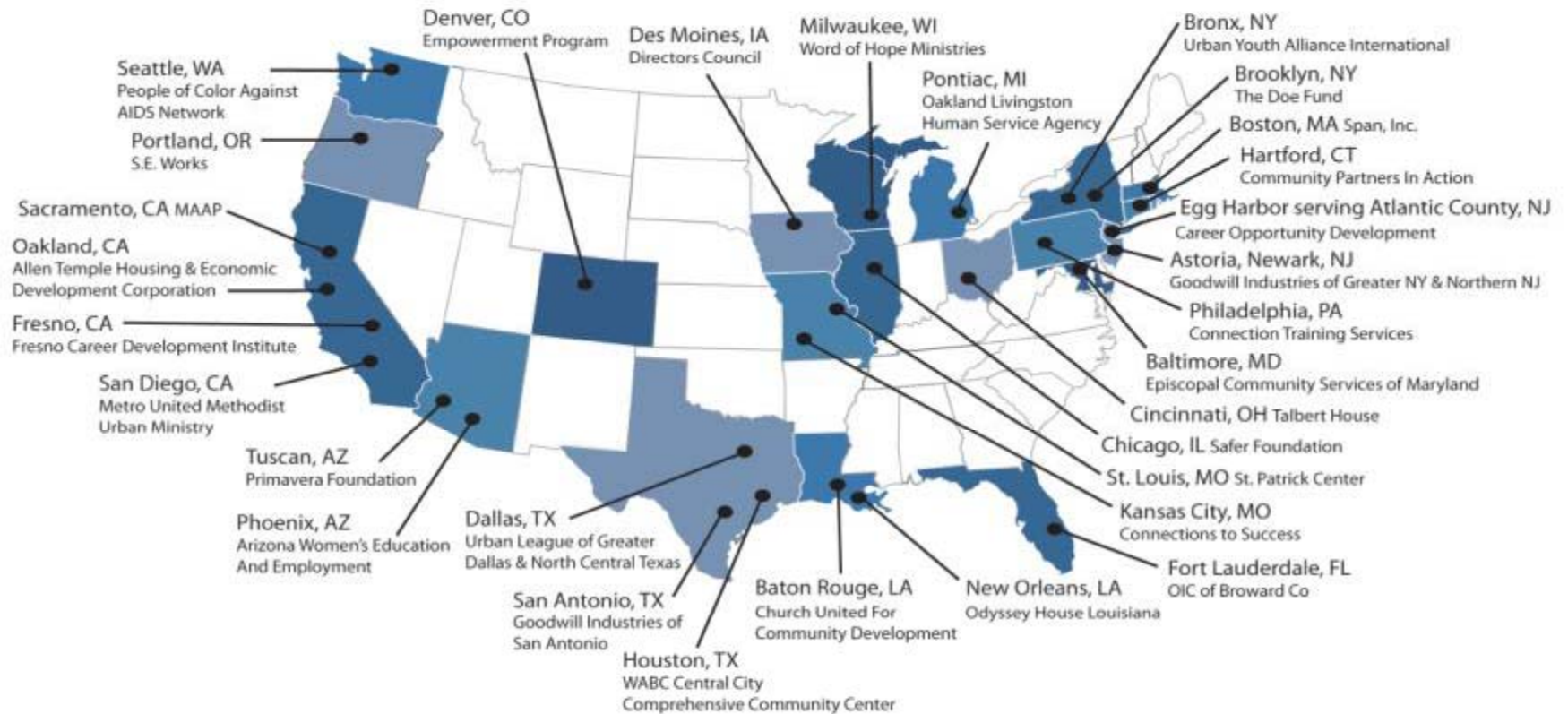
- Announced in 2004 by President Bush in his State of the Union Address
- \$85M program to date
- 30 sites in 20 states





President's Reentry Initiative

Prisoner Reentry Initiative (PRI) Grants





PRI Results

To date, PRI sites have:

- Served 8,571 participants
- 88% un-employed at program entry
- 50% less than high school degree
- 4,810 participants placed into jobs
- 6-month retention rate: 52%
- 1-year recidivism rate: 29% the national average





Beneficiary-Choice Contracting

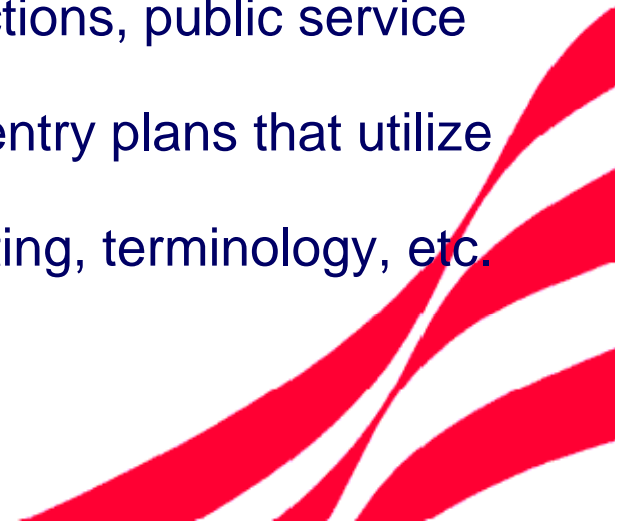
- Recently announced program
- 5 Grantees: Chicago, Indianapolis PIC, Colorado DWD, AWEE in Phoenix, Director's Council in Des Moines
- Combines participant choice plus performance-based contracting
- Each site will serve 225 ex-offenders/yr.





Helpful Tips for Building a Reentry Program

- Know and engage the FBCO community. Open a state FBCO office. Have an FBCO liaison in urban areas of high need.
- Utilize the intermediary model.
- The effectiveness of small/grassroots orgs and grants
- Inventory local resources in communities with large numbers of returnees
- Council of State Governments Justice Reinvestment Project/DOL FBCO project
- Hold networking sessions for employers, corrections, public service providers and FBCOs
- Encourage corrections to develop seamless reentry plans that utilize FBCOs
- Provide technical assistance to FBCOs – reporting, terminology, etc.





DOL Resources for Prisoner Reentry

President's PRI:

<http://www.doleta.gov/pri/>

DOL Reentry:

www.dol.gov/cfbci/Ready4Work.htm

**NIC Offender Workforce
Development Division:**

www.nicic.org/owd

CSG:

<http://justicereinvestment.org/>

CFBCI:

www.dol.gov/cfbci

Scott Shortenhaus

Shortenhaus.scott@dol.gov

202.693.6459

