



---

**Skills for Rhode Island's Future**

**Developing Strategic Partnerships**

---



## About Skills for Rhode Island's Future

---

**Skills for Rhode Island's Future is a nonprofit **workforce intermediary** dedicated to building talent pipelines  
We focus on unemployed or under-employed adults and students (16 – 24 years)**

Community Impact • October 2016 – March 2019

**1145  
Direct  
Hire**

**223  
Trained**

**169  
Students**

**77  
Employer  
s**

**\$24.4 M  
Impact**

# Demand Drive

Skills RI's Employer Partners Guide Our Work

---

**Skills RI prepares job seekers and future talent with the skills and competencies needed to meet the demands of industries and available jobs**

## Key Stakeholders

Skills RI Engages

---



**Employers**



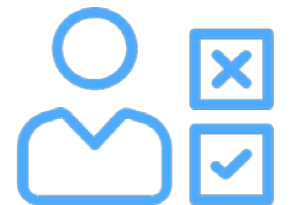
**Government**



**Schools**



**Community**



**Candidates**

# Business Services

Skills RI's Work



Direct Hire	Train-to-Hire	Internships	Consulting	Connector
Recruit Candidates	Customize Training Curriculum	Design Programs	Research & Design	Public-Private
Screen/Assess Candidates for Jobs	Recruit Candidates	Employer of Record	HR Support	Thought Leadership
Entry Level to Management Roles	Screen/Assess Candidates for Jobs	Work Readiness Training	Secure Funding	Meeting Convener
All Industries	Secure/Leverage Funding	Recruit – Matching Based on Skills/Interests	New Business Cultivation	Partnership Development
Marketing Strategies	Secure Trainers	All Industries	Stakeholder Engagement	Referrals
Hiring Events	Project Management	High School or College	Project Management	

# Workforce Intermediary Role

What Skills RI Brings to Partnerships

---



**Program Design**



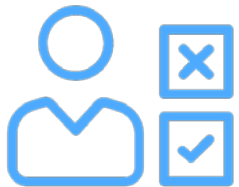
**Employer of  
Record**



**Stakeholder  
Engagement**



**Marketing**



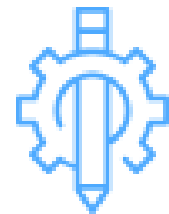
**Assess Candidates**



**Leverage  
Funding**

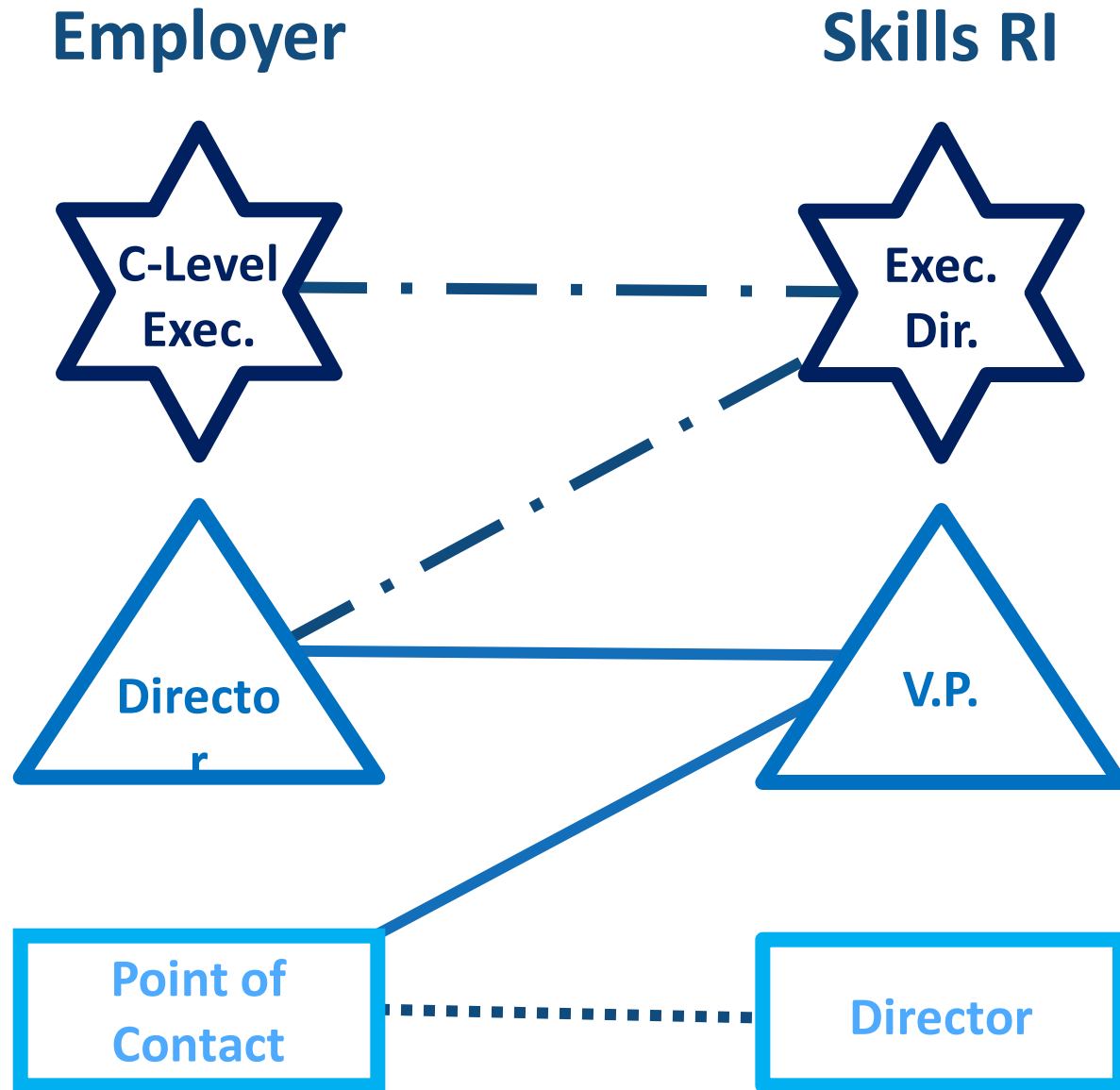


**Single Point of  
Contact**



**Project  
Management**

# Employer Engagement Approach



## Key Steps

1. Do your homework
2. Understand employer or business industry challenges
3. Identify internal capacity
4. Identify external stakeholders
5. Map out solutions based ideas
6. Develop project plan
7. Work together on solutions and execution
8. Communicate, communicate and communicate even more

# Employer Portfolio

Sample of Skills RI's Employer Partners





# Contact Us

---

[www.skillsforri.com](http://www.skillsforri.com)

401-680-5960