



Early Care and Education Workforce

2.0 Cross State Convening

October 22-24, 2018

Millennium Hotel Minneapolis • 1313 Nicollet Mall • Minneapolis, MN 55403

Resource List

General Resources

National Academies of Science, Engineering and Medicine: Board on Children, Youth, and Families. (2017). *Financing early care and education with a highly qualified workforce*.

Retrieved from:

http://sites.nationalacademies.org/DBASSE/BCYF/Finance_ECE/index.htm

Center for the Study of Child Care Employment *Early Childhood Workforce Index*

<http://cscce.berkeley.edu/early-childhood-workforce-index/> This biennial database establishes a baseline description of early childhood employment conditions and policies for each state.

Career Pathways/Apprenticeships

National Association for the Education of Young Children. (2017). *The Profession*.

NAEYC's *Power to the Profession* initiative. Retrieved from:

<https://www.naeyc.org/profession>.

Apprenticeships as a Degree Attainment Strategy for the Early Childhood Workforce.

Alison Lutton, September 2018.

http://1199ctraining.org/docs/AllisonLutton_ApprenticeshipWhitePaper_formatted090418.pdf

Rethinking Credential Requirements. Mary Alice McCarthy. New America.

<https://naproduction.s3.amazonaws.com/documents/Rethinking-Credential-Requirements-ECE.pdf>

Replication toolkit and technical assistance opportunities:

<http://1199ctraining.org/ECereplication>

Evaluation of Career Pathways:

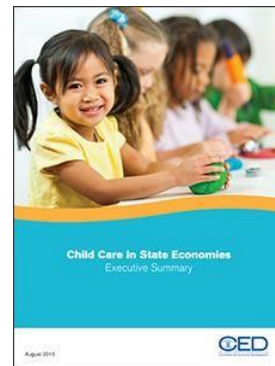
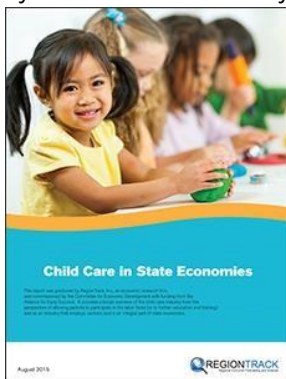
<https://www.dol.gov/asp/evaluation/completedstudies/Career-Pathways-Design-Study/4-Career-Pathways-in-Early-Care-and-EducationReport.pdf>

State Report: EARLY EDUCATION AND CARE CAREER PATHWAYS AND COMPENSATION REPORT: OPPORTUNITIES FOR MASSACHUSETTS - Final Report:

<http://buildinitiative.org/Portals/0/Uploads/Documents/Work/Learning%20Tables/2017StatePolicy/MA%20LearningTable%202016%20Report.pdf>

Committee for Economic Development

Child Care in State Economies examines the child care industry's effect on parents' participation in the labor force and provides extensive details regarding the industry's state economic impact, including: usage rates, the role of public funding, revenues, and business structure. The report was commissioned by the Committee for Economic Development, produced by the economic firm, Region Track, Inc., and generously supported by the Alliance for Early Success.



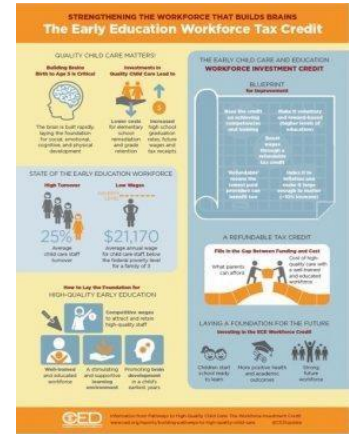
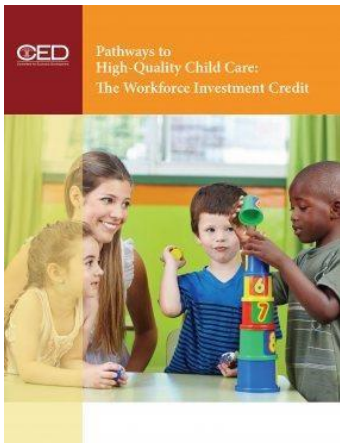
[Download Full Report](#)

[Download Executive Summary](#)



[Download National Overview](#)

[Download Infographic](#)



Policy Brief Executive Summary Credit Infographic Pathways to High Quality Child Care (policy brief about Louisiana’s refundable tax credit): <https://www.ced.org/pdf/PathwaysToHighQualityChildCare.pdf>

Louisiana Department of Revenue: School Readiness Tax Credit: <http://revenue.louisiana.gov/IndividualIncomeTax/SchoolReadinessTaxCredit>

Early Learning and the Louisiana Story (podcast): <https://www.ced.org/podcasts/early-learning-and-the-louisiana-story>

The Early Education Workforce Tax Credit (infographic): https://www.ced.org/pdf/Infographic_-_Child_Care_Tax_Credit_Brief_August_2017.pdf

The Business Case for Investing in High Quality Child Care (infographic): https://www.ced.org/pdf/CC-Infographic_FINAL.pdf

State-by-state data of the demographics of young children and wages of child care providers (web page): <https://www.ced.org/reports/early-learning/pathways-to-high-quality-child-care>

State-by-state data of the economic impact of child care including fact sheets, talking points, and infographics (web page): <https://www.ced.org/childcareimpact>

Compensation

Minnesota’s Workforce Compensation Advisory Group Summary Report and Recommendations: http://mn.gov/gov-stat/pdf/MN_Workforce_Compensation_Advisory_Group_Summary.pdf

Minnesota’s Early Childhood Workforce Webpage: <https://ecworkforcemn.org/>

Barnett, S. and Kasmin, R. (2017). Teacher Compensation Parity Policies and StateFunded Pre-K Programs. New Brunswick, NJ: the National Institute for Early Education

Research and Berkeley, CA: Center for the Study of Child Care Employment, University of California, Berkeley: <http://nieer.org/wp-content/uploads/2017/10/TeacherCompensation-Parity-Policies.pdf>

Center for the Study of Child Care Employment Resources:

Brief: Understanding Many Languages: Preparing Early Educators to Teach Dual Language Learners: <http://cscce.berkeley.edu/understanding-many-languagespreparing-early-educators-to-teach-dual-language-learners/>

Video: Why Do Parents Spend So Much On Child Care, Yet Early Childhood Educators Earn So Little? <http://cscce.berkeley.edu/why-do-parents-spend-so-much-on-child-careyet-early-childhood-educators-earn-so-little/>

Report: Strategies in Pursuit of Pre-K Teacher Compensation Parity: Lessons From Seven States and Cities: <http://cscce.berkeley.edu/strategies-in-pursuit-of-pre-k-teachercompensation-parity/>

Brief: The Workforce Data Deficit: Who it Harms and How it Can Be Overcome: <http://cscce.berkeley.edu/the-workforce-data-deficit/>

Brief: What Does Good Child Care Reform Look Like?: <http://cscce.berkeley.edu/whatdoes-good-child-care-reform-look-like/>

Report: Teachers' Voices: Work Environment Conditions That Impact Teacher Practice and Program Quality: <http://cscce.berkeley.edu/teachers-voices-work-environmentconditions-that-impact-teacher-practice-and-program-quality/>

Report/Article: Yes They Can: Supporting Bachelor Degree Attainment for Early Childhood Practitioners: <http://cscce.berkeley.edu/yes-they-can-supporting-bachelor-degreeattainment-for-early-childhood-practitioners/>

Communications

Resources on state campaigns for kids. *Vote for Young Children* webpage from The Alliance for Early Success (<http://campaigns.earlysuccess.org>) with campaigns from California, Colorado, Ohio, Pennsylvania, Michigan, New Jersey, New York, Texas, Virginia, Wisconsin, and NAEYC.

CEELO Preschool cost of quality: Communications Toolkit: <http://ceelo.org/toolkit/cpqr/> with a section on workforce: <http://ceelo.org/toolkit/cpqr/teachers-important/>

Bipartisan Policy Center: Building-Support-for-Early-Childhood-Excellence: <https://bipartisanpolicy.org/wp-content/uploads/2018/09/Building-Support-for-EarlyChildhood-Excellence.pdf>

Strategic Communications Resources from the North Carolina Early Childhood Foundation under 'Share the results' which includes templates: <https://buildthefoundation.org/2018-voter-poll-toolkit/>

Effectively Communicating to "Markets of One," Bill Millett Scope View Strategic Advantage - Resources for making the case for early learning to businesses, postsecondary, crime prevention and military readiness:

<https://elc.grads360.org/api/ApplicationMedia/GetDownload/22377>

Engaging Business Leaders and Philanthropy

U.S. Chamber of Commerce Foundation Early Education Resources and Case Studies:
<https://www.uschamberfoundation.org/early-childhood-education>

Leading the Way: A Guide for Business Engagement in Early Education:
<https://www.uschamberfoundation.org/reports/leading-way-guide-businessengagement-early-education>

Workforce of Today, Workforce of Tomorrow: The Business Case for High-Quality Childcare: <https://www.uschamberfoundation.org/reports/workforce-today-workforcetomorrow>

Louisiana: Case Study on Business Advocates for Childcare:
<https://www.uschamberfoundation.org/sites/default/files/EarlyEd%20Toolkit%20-%20Louisiana%20Case%20Study.pdf>

Public-Private Partnerships for Early Learning: The Case For Philanthropy Involvement. (October 2014). Office of Child Care, U.S. Department of Health and Human Services:
https://childcareta.acf.hhs.gov/sites/default/files/public/case_for_involvement_philanthropy.pdf

Public-Private Partnerships: Getting Started And Principles For Success. (October 2014). Office of Child Care, U.S. Department of Health and Human Services:
https://childcareta.acf.hhs.gov/sites/default/files/public/getting_started_tips_tricks.pdf