



# **Strategies for Promoting Economic Mobility**

**September 12, 2019**

# Key Features of California's TANF Program

- Cash Grants for Families;
- 48 Months of Cash Assistance and Welfare-to- Work (WTW) Services;
- 24 Months of Flexible Work Activities (24-Month Time Clock);
- Exemptions from Time Clock and Participation;
- Safety Net for Children;
- Subsidized Employment Opportunities;
- County Flexibility to Design WTW Program;
- Holistic Appraisal of Basic Needs and Barriers;
- Immediate Needs Intervention;
- Earnings Disregard;
- Child Care/Supportive Services;
- Substance Abuse, Mental Health and Domestic Violence Services; and
- Homelessness Assistance

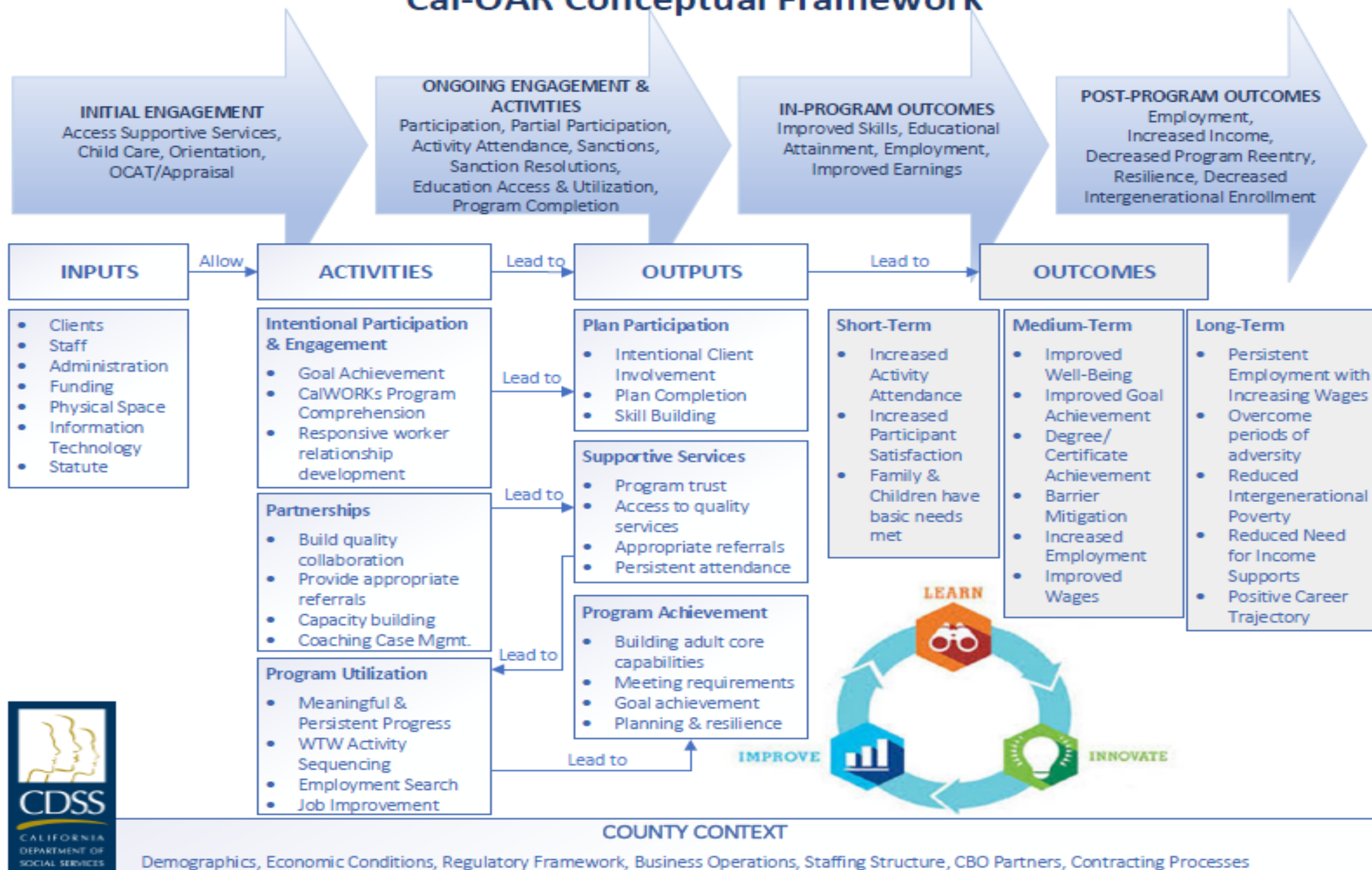
# Home Visiting Initiative

The Home Visiting Initiative aims to support positive health development and well-being outcomes for pregnant and parenting women, families, and infants born into poverty, expand their future educational, economic, and financial capability opportunities, and improve the likelihood that they will exit poverty.

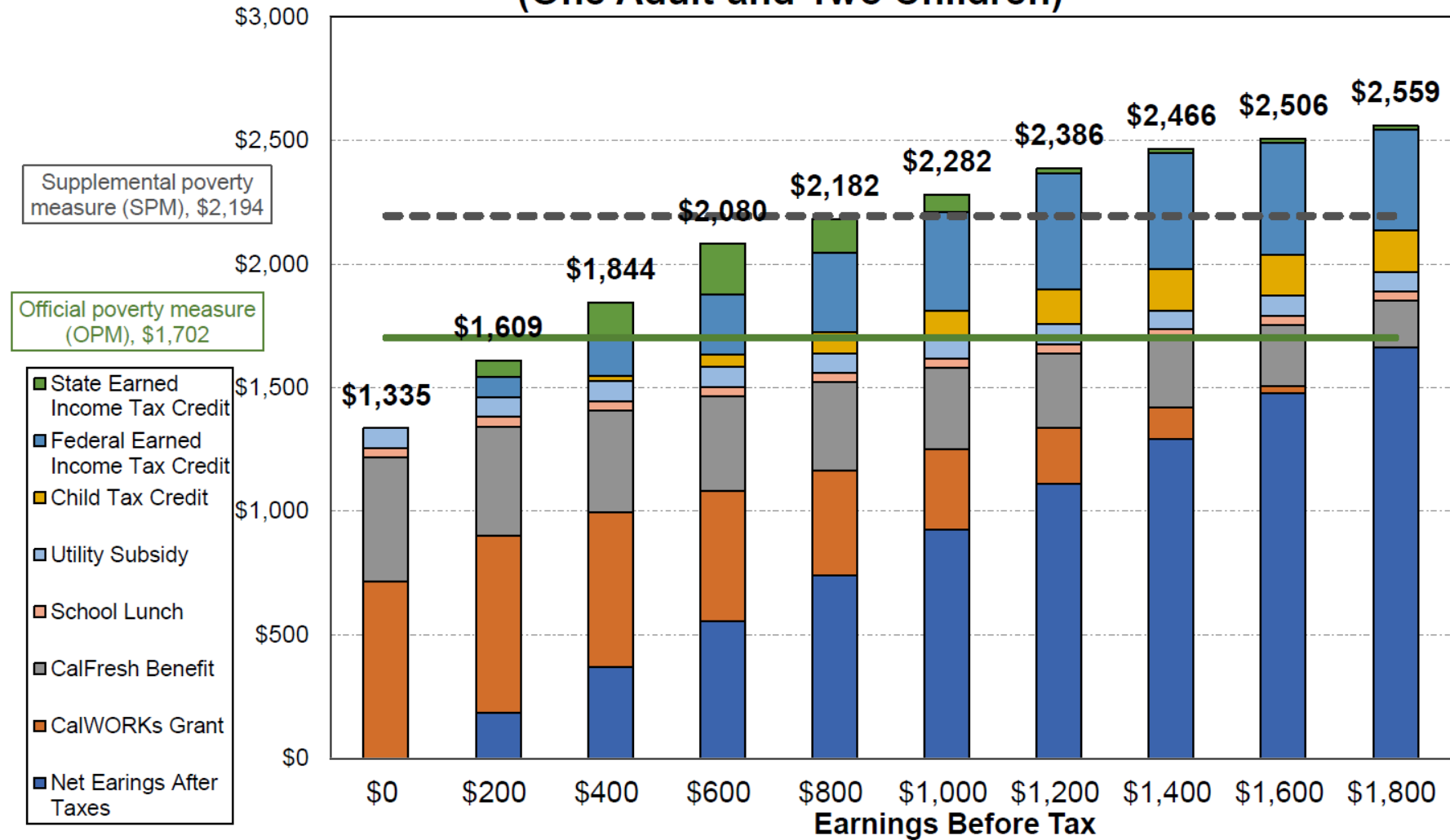
# CalWORKs Outcomes Accountability and Review (Cal-OAR) Performance Measures

- Participant engagement
- Service delivery
- Participation
- Employment
- Educational attainment
- Program exits
- Program reentries
- Family and child well-being

# Cal-OAR Conceptual Framework



## Monthly Resources Available to a Family of Three (One Adult and Two Children)



# Related Investments in the Governor's Budget

- \$1 billion in a new expanded EITC
- \$331.5 million increase in CalWORKs Maximum Aid Payments (MAP)
- \$195 million for grants for child care and preschool workforce professional development and education to improve the quality of care and provide career advance opportunities
- \$165 million over five years for targeted multi-craft pre-apprenticeship programs to increase access to careers in the construction industry and an expanded High Road Training Partnership program to foster connections among employers, workers, and communities to analyze climate- and technology-related occupational changes
- \$56.4 million to improve access to CalWORKs Stage One child care services

# Alignment Across Workforce Programs

- Priority Populations and Strategies
- Career Pathways
- Data
- Performance Measures
- Co-enrollment Policies
- Continuum of Workforce Programs