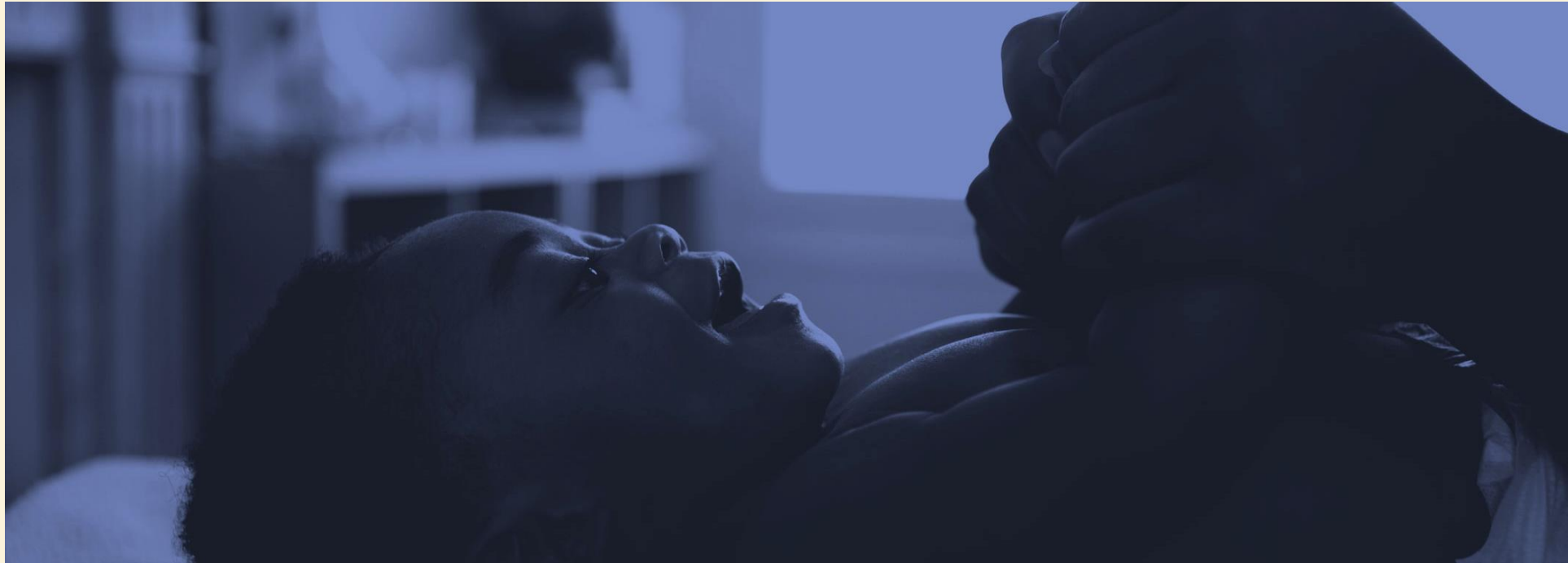


NATIONAL BIRTH EQUITY COLLABORATIVE



## **Aligning Health & Human Services to Promote the Health and Wellbeing of Moms & Babies**

National Governor's Association

September 3, 2019

# Worldview

## Human Rights

### Article 25.

(1) Everyone has the right to a **standard of living adequate for the health and well-being of himself and of his family**, including food, clothing, housing and medical care and necessary social services

(2) Motherhood and childhood are **entitled** to special care and assistance. All children, whether born in or out of wedlock, shall enjoy the same protection.

## Reproductive Justice

**The human right to maintain personal bodily autonomy, have children, not have children, and parent the children we have in safe and sustainable communities.**

-Loretta Ross

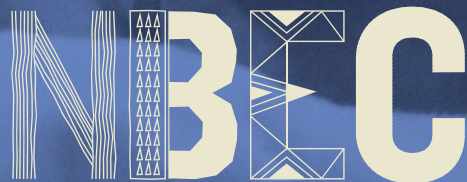
- Analyze power systems
- Address intersecting oppressions
- Center the most marginalized

# Mission

NBEC creates solutions that optimize Black maternal and infant health through training, policy advocacy, research and community centered collaboration.

# Vision

All Black mothers and babies thrive.



NATIONAL BIRTH EQUITY COLLABORATIVE

## Core Values

*Leadership*    *Freedom*    *Wellness*  
*Black Lives*    *Sisterhood*

## **birth equity (*noun*):**

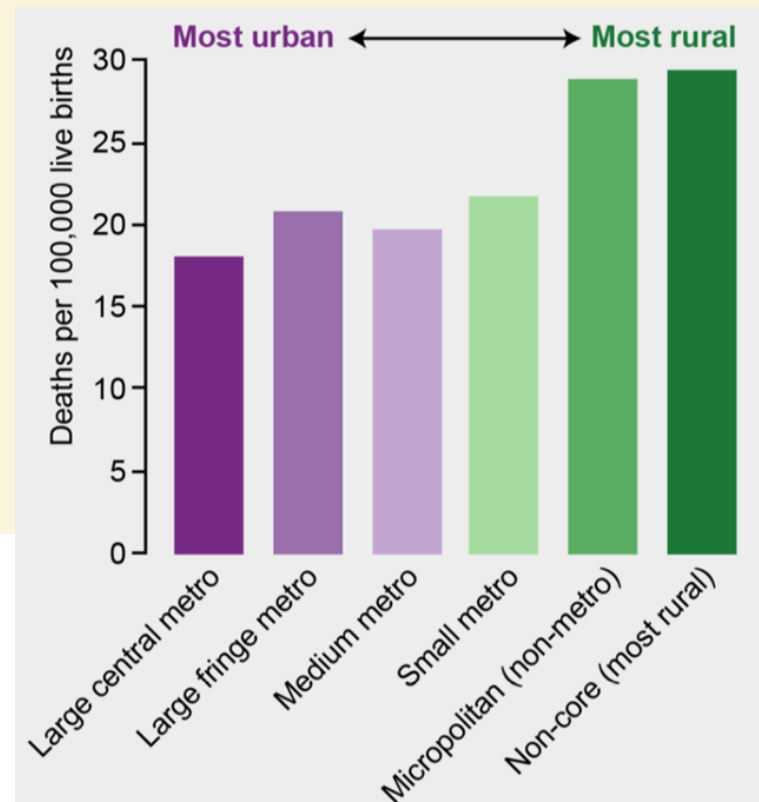
1. The assurance of the conditions of optimal births for all people with a willingness to address racial and social inequalities in a sustained effort.

Joia Crear-Perry, MD  
*National Birth Equity Collaborative*

# Disparities in Maternal Mortality

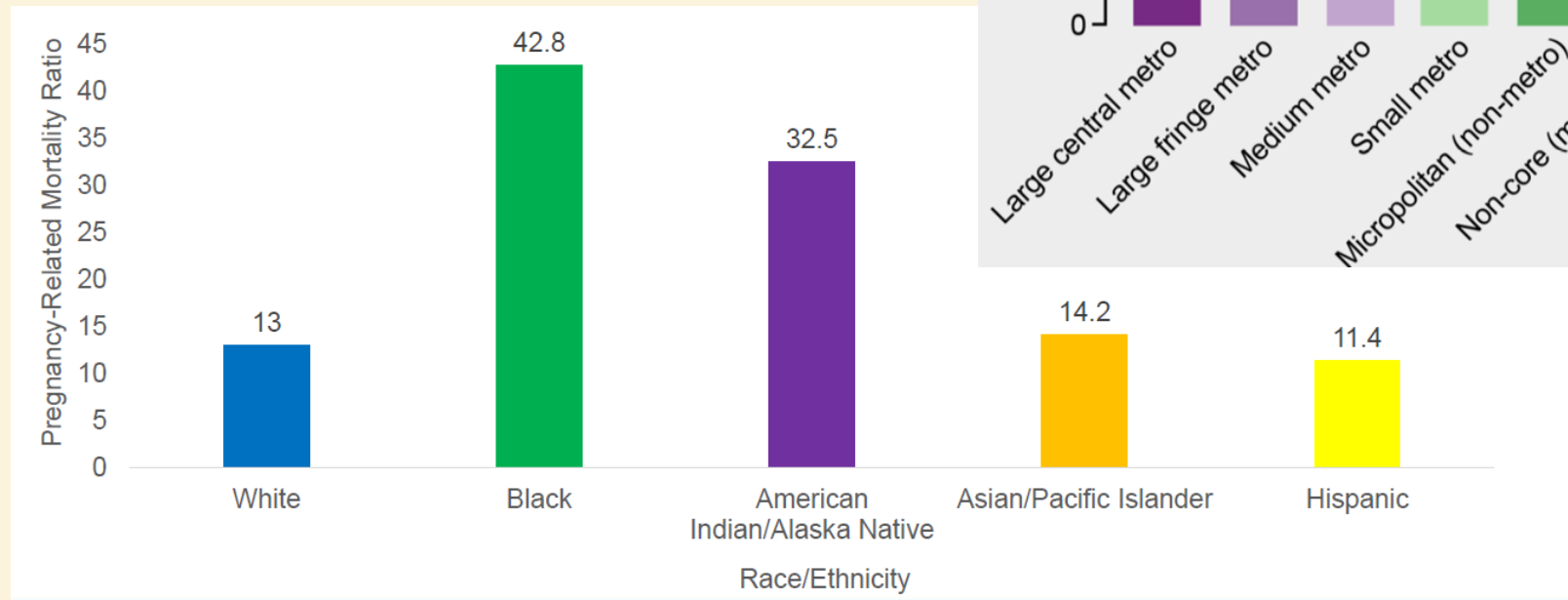
## Geographic

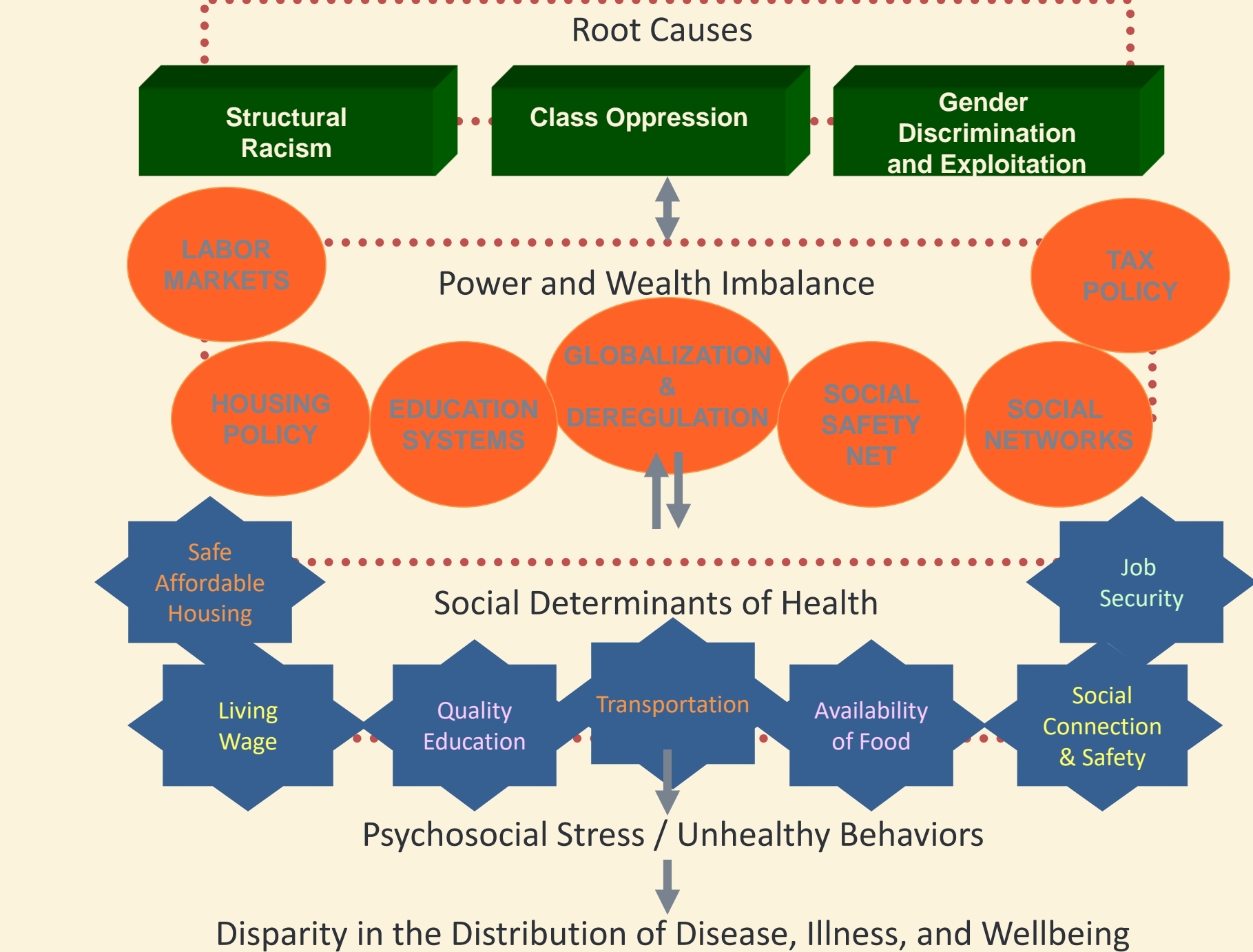
Maternal Mortality Rates, 2015



## Racial

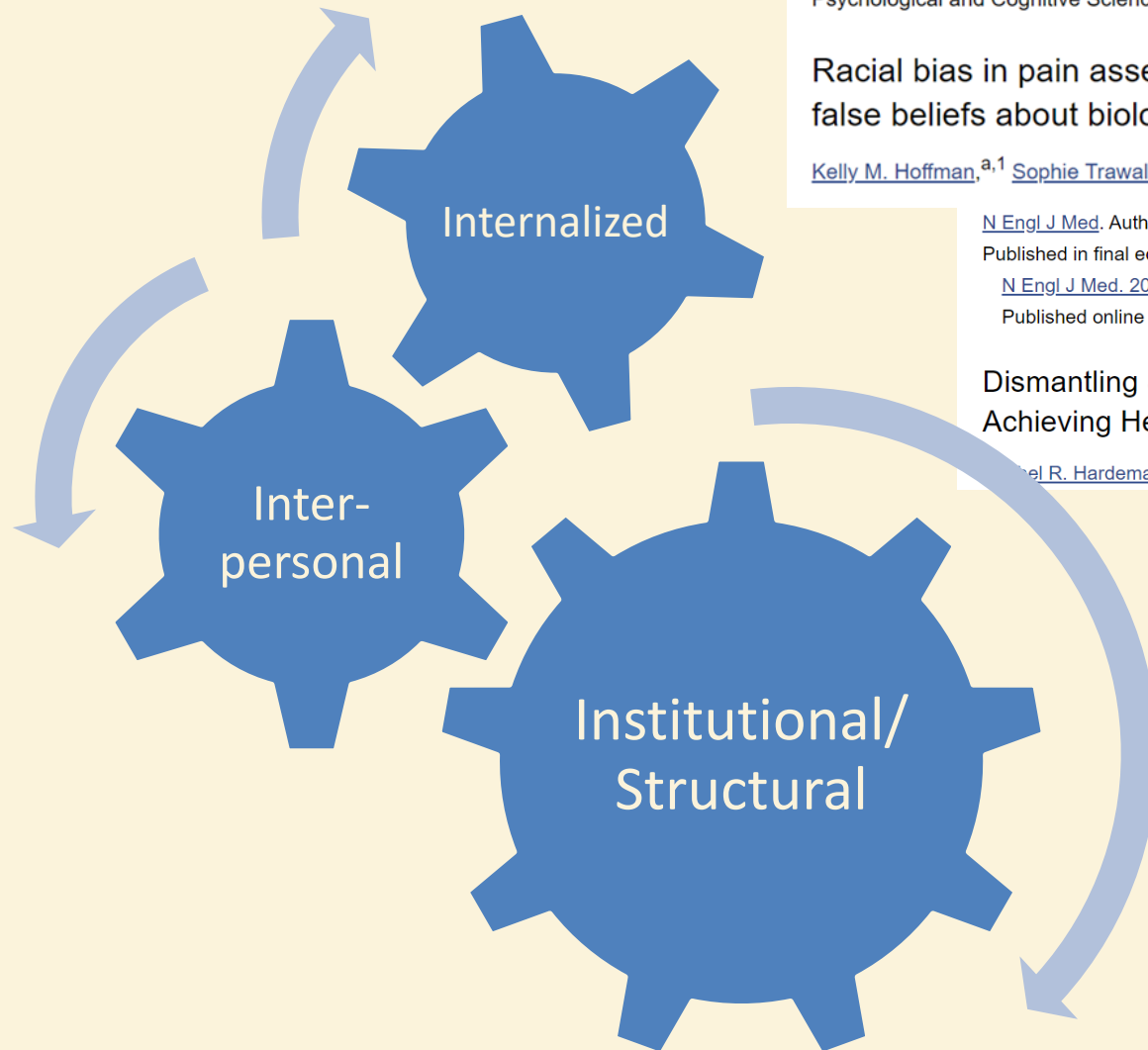
Pregnancy-related Mortality by Race/Ethnicity, PMSS, 2011-2015





Adapted by MPHI from R. Hofrichter, *Tackling Health Inequities Through Public Health Practice*.

# Levels of Racism



[Proc Natl Acad Sci U S A](#). 2016 Apr 19; 113(16): 4296–4301.

Published online 2016 Apr 4. doi: [10.1073/pnas.1516047113](https://doi.org/10.1073/pnas.1516047113)

Psychological and Cognitive Sciences

PMCID: PMC4843483

PMID: [27044069](https://pubmed.ncbi.nlm.nih.gov/27044069/)

Racial bias in pain assessment and treatment recommendations, and false beliefs about biological differences between blacks and whites

[Kelly M. Hoffman](#),<sup>a,1</sup> [Sophie Trawalter](#),<sup>a</sup> [Jordan R. Axt](#),<sup>a</sup> and [M. Norman Oliver](#)<sup>b,c</sup>

[N Engl J Med](#). Author manuscript; available in PMC 2017 Sep 7.

Published in final edited form as:

[N Engl J Med](#). 2016 Dec 1; 375(22): 2113–2115.

Published online 2016 Oct 12. doi: [10.1056/NEJMp1609535](https://doi.org/10.1056/NEJMp1609535)

PMCID: PMC5588700

NIHMSID: NIHMS867337

PMID: [27732126](https://pubmed.ncbi.nlm.nih.gov/27732126/)

Dismantling Structural Racism, Supporting Black Lives and Achieving Health Equity: Our Role

[Michael R. Hardeman](#), PhD, MPH, [Eduardo M. Medina](#), MD, MPH,<sup>1</sup> and [Katy B. Kozhimannil](#), PhD, MPA

# Concurrent Programs

Program	Description	Funded by
Maternal Mortality Review Committees*	a standard and comprehensive system primarily operating at the state level. MMRCs identify, review, and analyze maternal deaths; disseminate findings; and act on the results.	CDC/HRSA
Perinatal Quality Collaboratives	state or multi-state networks of teams working to improve the quality of care for mothers and babies.	CDC/HRSA
Alliance for Innovation in maternal health	a national data-driven maternal safety and quality improvement initiative based on proven implementation approaches to improving maternal safety and outcomes in the U.S.	HRSA
Title V	federal block grant program, a key source of support for promoting and improving the health and well-being of the nation's mothers, children, including children with special needs, and their families.	HHS
Title X	the only federal grant program dedicated solely to providing individuals with comprehensive family planning and related preventive health services.	HHS
Community-based programs & Private health institutions		Philanthropy



# Defining Community

## Community

**1:** a unified body of individuals: such as

**a:** the people with common interests living in a particular area *broadly* : the area itself, the problems of a large *community*

**b:** a group of people with a common characteristic or interest living together within a larger society, a *community* of retired persons

**c:** a body of persons of common and especially professional interests scattered through a larger society, the *academic community*

**d:** a body of persons or nations having a common history or common social, economic, and political interests, the *international community*

**e:** a group linked by a common policy

## Community Based Organization

*A public or private nonprofit organization that is representative of a community or a significant segment of a community and works to meet needs and improve life for residents. They build grassroot power & equity across society through intersecting issues.*

### Identifying CBOs

- Created from need
- Start-up culture
- Irregularly funded or social entrepreneurship model
- Focus and programming meets immediate needs of community

# Barriers to Engagement

## Common Criticisms

- Data sharing
- Discomfort- language, environment, etc.
- Lack of training and leadership pipelines
- Compensation
- Interpersonal and structural racism

## Learning from MMRCs

- ✓ Inclusive Committee recruitment process
- ✓ Equalizing overrepresentation of provider
- X Community votes undervalued
- X Recommendations lack perspective and impact

**Must create equity to meaningfully engage community voice**

# Takeaways

## Policy

- Ensure quality maternal mortality and morbidity data collection and appropriate resource allocation for prevention of maternal health harms
- Educate policymakers on racial equity
- Expand and ensure access to maternity care and preventive health services

## Culture

- Advance health equity by addressing racism within and beyond the health care system
- Language shift to “structural determinants”
- Connect all policy initiatives to lived experience
- Meaningfully engage community in policy and practice changes


# Thank you

Visit us at [birthequity.org](http://birthequity.org)



Carmen Green, MPH  
Director

[cgreen@birthequity.org](mailto:cgreen@birthequity.org)

   @birthequity