



**Donna M. Johnson, MHS**  
Director, Family Support  
Childcare and Parent Services Program (CAPS)  
September 11, 2019



Georgia Department of Early Care and Learning

Bright from the Start: Georgia Department of Early Care and Learning

[www.dec.state.ga.us](http://www.dec.state.ga.us)

# CAPS HAS MOVED.

The CAPS program has moved from the Division of Family and Children Services (DFCS) to the Georgia Department of Early Care and Learning (DECAL).



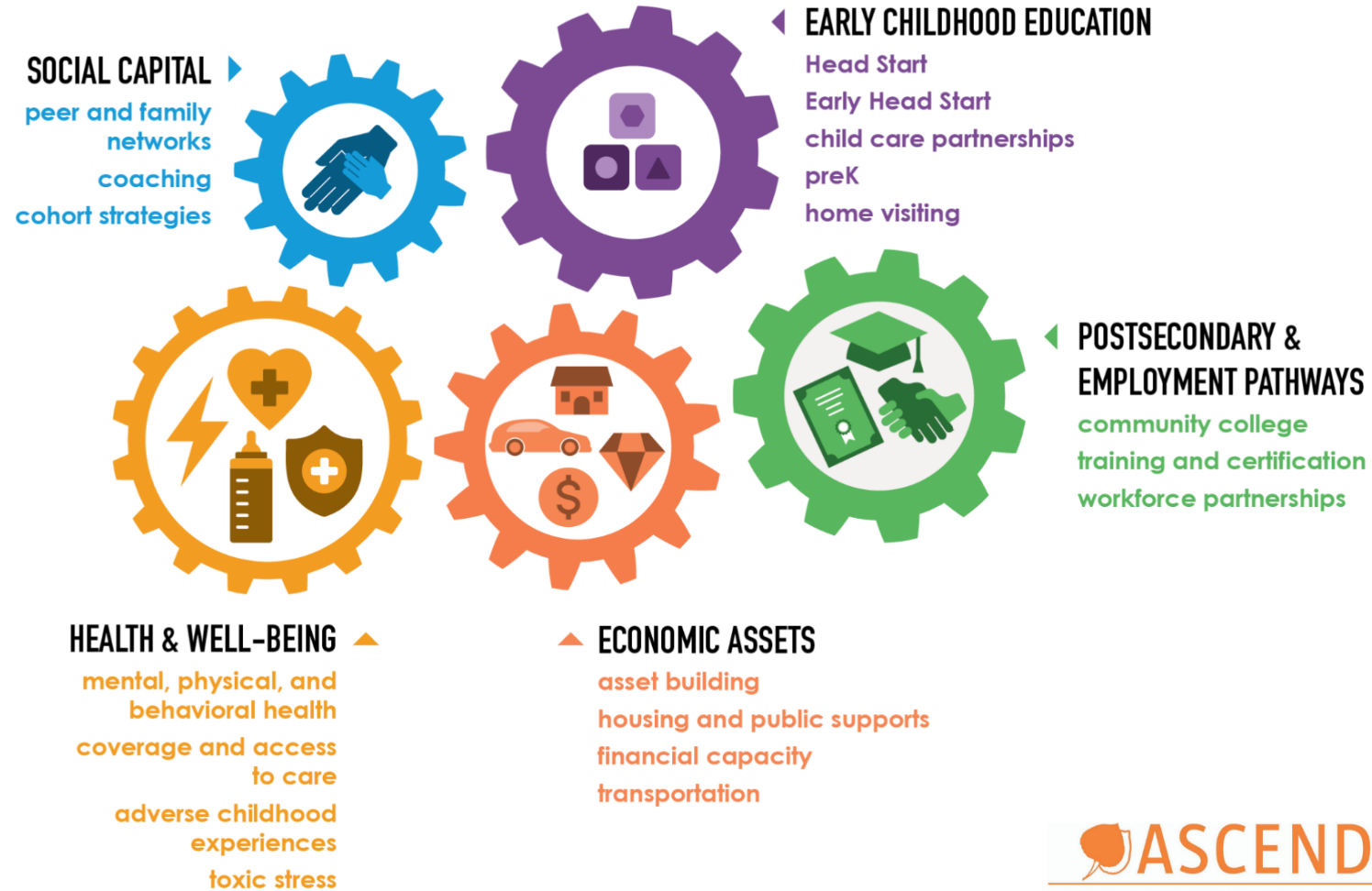
Call 1-833-4GA-CAPS (1-833-442-2277) for more information or visit [www.caps.dec.al.ga.gov](http://www.caps.dec.al.ga.gov).



# Supporting Families in CAPS



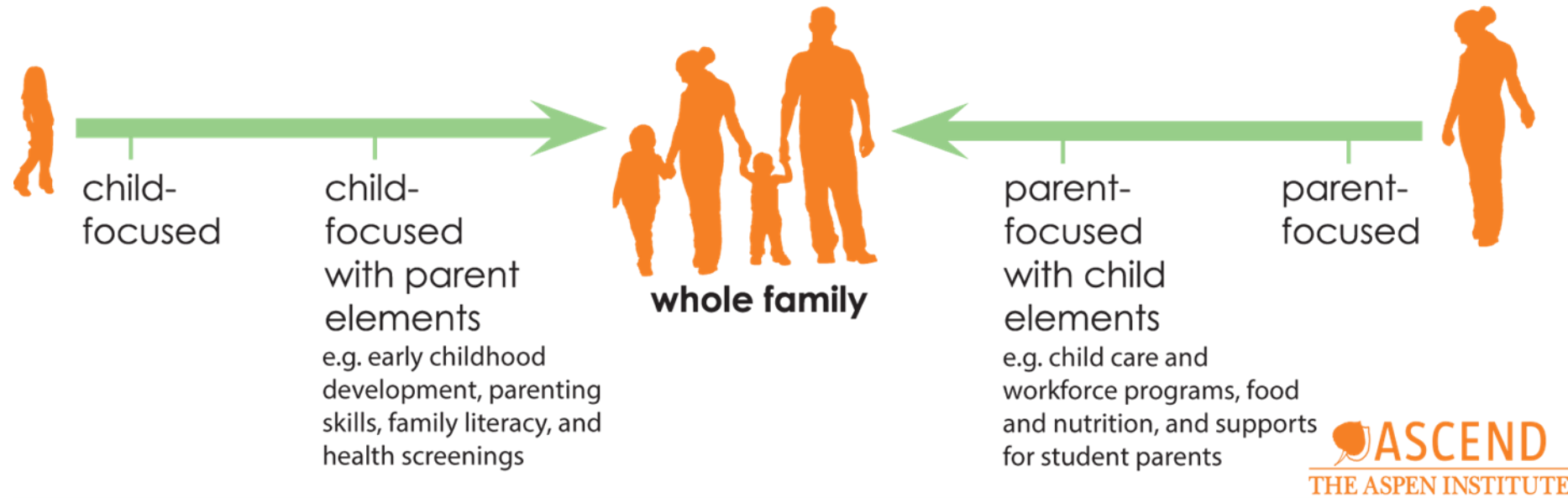
# Two-Generation Core Components





# Two-Generation Continuum

## The Two-Generation Continuum



# Why invest in the whole family?

Research shows that supporting children and their parents **together** has an impact for generations



A college degree **DOUBLES** a parent's income



A **\$3,000** increase in income during early childhood can lead to a **17%** increase in earnings for the child in adulthood.

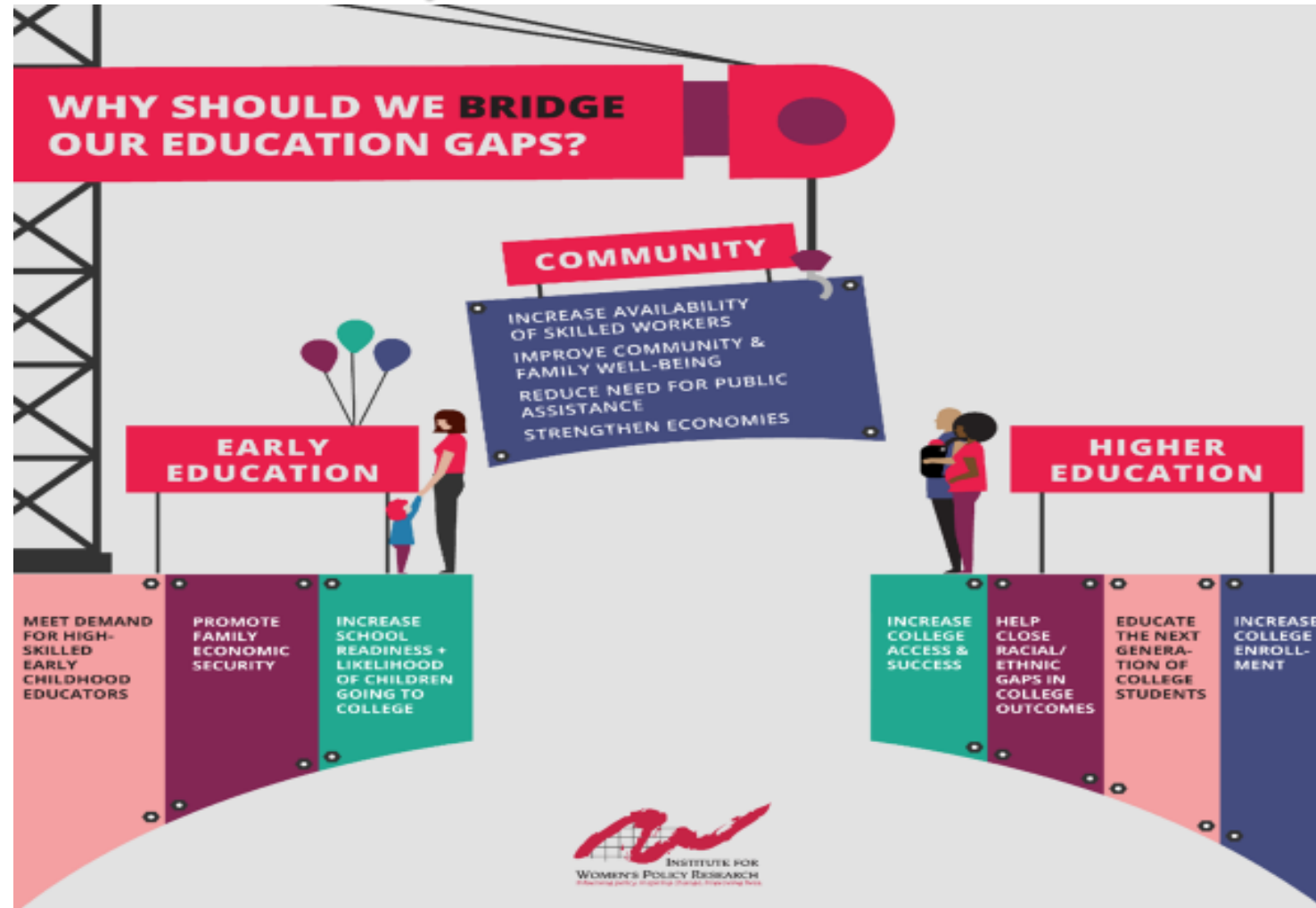


Research demonstrates up to **13% ROI** in high-quality ECE

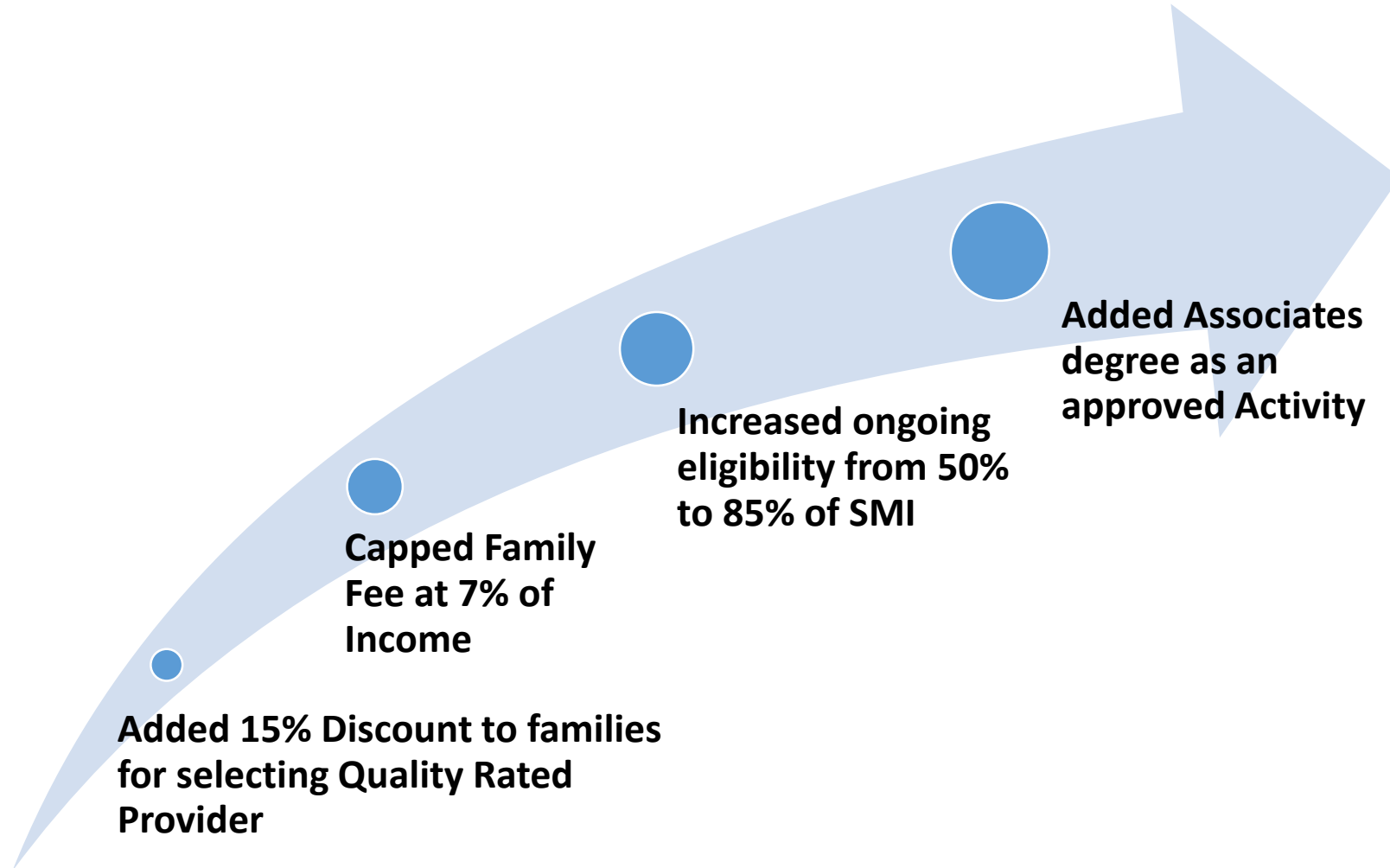


The brains of new parents undergo **MAJOR CHANGES**

# Coordination across early education and higher education systems



# Supporting a Two-Generation Approach





# CAPS Two-Generation Projects

Technical College  
System of Georgia  
Partnership

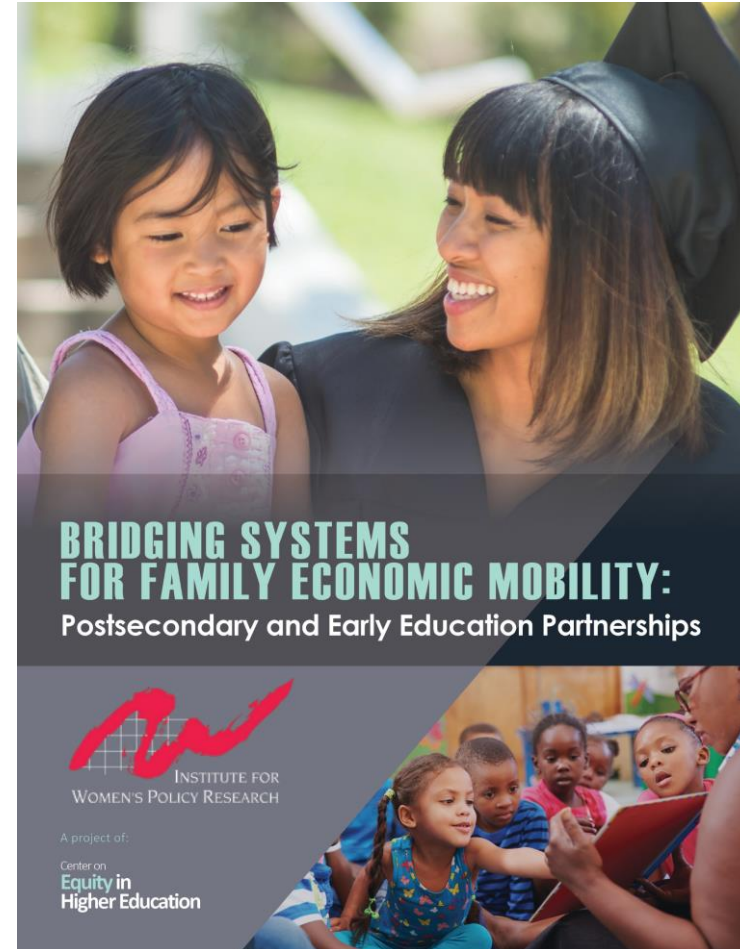
Community  
Resource Portal

Family Centered  
Coaching

Nana Grants

# Georgia Recognized in National Report

*“Linking Early Childhood  
and Higher Education  
Systems Can Improve  
Economic Mobility”*



Link to report- <https://iwpr.org/postsecondary-early-education-systems-pr/>