



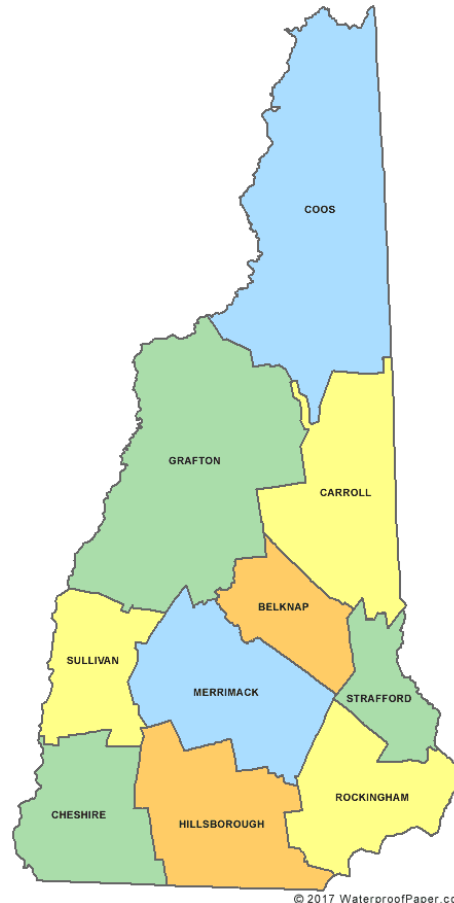
Solving the Benefits Cliff in the Granite State

**Christine Tappan, MSW, CAGS
Associate Commissioner, NH DHHS**

***National Governor's Association
September 12, 2019***

Department of Health and Human Services

To join communities and families in providing opportunities for citizens to achieve health and independence.



- “Umbrella” state HHS agency – limited county (10) role
- 3,000 employees
- \$3 Billion annual budget
- Provide direct services and oversight of quasi-governmental agencies
- 15% of population on Medicaid
- 90,000 on SNAP
- 9,000 child care scholarships
- 3,500 families and 5,700 children on TANF
- 47,000 children served via child support

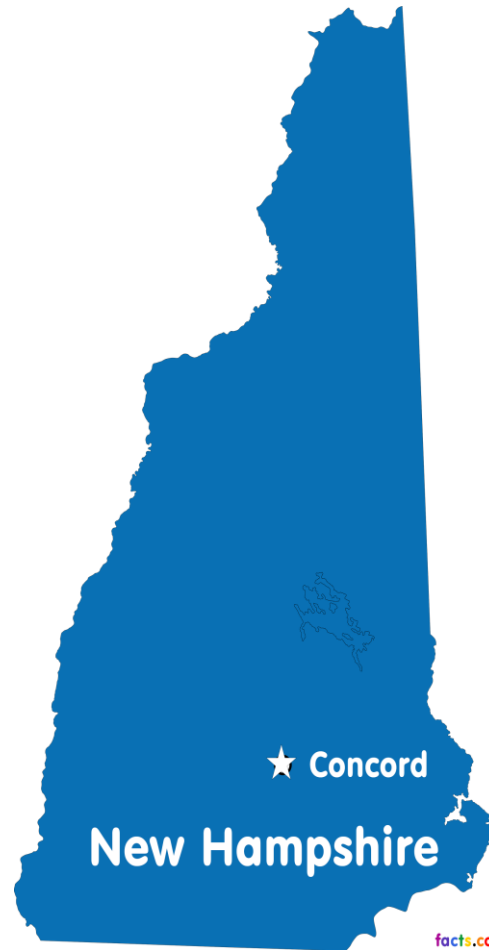


NH's mixed economic and social vulnerability landscape

3

- 1.3 million people
- 90% white
- Median household income \$68,000
- Unemployment rate 2.4%
- Poverty rate 7.7%
- #1 Child Well-Being

- NO SALES OR INCOME TAX



- Livable wage \$26 (1Adult:1 Child) - minimum wage \$7.25 an hour
- Rapidly changing cultural makeup, 2018 – 1:4 infants born non-white
- 3rd fastest aging state in U.S.
- Workforce crisis felt by ALL employers
- 4,000 children experiencing chronic housing instability - need 20,000 housing units today
- 1,200 in foster care - doubled between 2014 – 2017
- 10,000 grand families
- “Deep” pockets of poverty, along with higher rates of mental illness, suicide, substance use disorders, and child maltreatment
- 1:10 report four or more ACEs in NH



Whole Families Approach to Jobs: Parents Working, Children Thriving

- ❑ Disrupt poverty
- ❑ Two-generational framework
- ❑ Families at the center of policy making
- ❑ Incentivize work, boost individual effort and responsibility
- ❑ Promoting efficiencies in government and multi-sector partnerships

Learning community to accelerate innovation

Environmental Health

Environmental elements support individuals' wellness and health behaviors; exposure to toxic substances and physical hazards is reduced.

Education

Children are ready to learn and able to graduate; adults are adequately prepared to be self-sufficient.

Transportation

Individuals have safe, affordable, and accessible transportation options.

Housing Stability

Individuals have safe, affordable, and stable housing.

Healthy Thriving Communities



Healthy Thriving Communities

Transportation

Housing Stability

Health & Well-Being

Employment & Income Stability

Food & Nutrition

Safety

Environmental Health

Education

Safety

Individuals live in safe and inclusive communities; free from abuse, neglect, discrimination, inequity, crime and violence

Food & Nutrition

Individuals have reliable access to a sufficient quantity of affordable, nutritious food.

Employment & Income Stability

Individuals maximize their capacity to support themselves financially across their lifespan.

Health & Wellbeing

Individuals achieve their desired level of physical, mental and emotional health.



ACF Region I - State Level “Whole Families” Efforts

EXAMPLES	
CT	<ul style="list-style-type: none"> • Embedding workforce incentives in home visiting program • Data integration • Executive branch commission on whole family
ME	<ul style="list-style-type: none"> • Benefits cliff research • Exploring range of policy options related to benefits cliff
MA	<ul style="list-style-type: none"> • Programs serving young parents • Systems alignments • Future focus on child support and families
NH	<ul style="list-style-type: none"> • Families and the opioid crisis • Exploring range of policy options related to benefits cliffs
RI	<ul style="list-style-type: none"> • Young parents 16-24 focus • Improving policy alignment across programs • Career pathways for early childhood educators with potential focus on non-traditional hours of care to meet workforce needs • whole family budgeting among state agencies and the Legislature
VT	<ul style="list-style-type: none"> • Toolkit with family-friendly principles/approaches across executive agencies, legislature, and organizations • Emerging focus on putting parents at the center and identifying how to streamline case management.

Tackling the Cliff Effect...

How's it affecting families and businesses in our state and how can we solve it?



Keeping grounded through lived experiences



*“We need to move away from the stigma of “welfare” -
it’s really about strengthening all families.”*



Readying the organization



- Setting our North Stars
 - Safety Culture as a foundation
 - **Integration** that promotes prevention and providing the right service, at the right time, in the right place - and to the **whole family**
 - Alignment towards “*collective*” outcomes

- “Refreshing” our agency/system and program governance

- Building relationships, partnerships, and mutual responsibility

- Using Data to drive innovation and change





NH Department of Health and Human Services DHHS Overview*

Office of the
Commissioner

- Administrative Business Supports
- Legal & Regulatory
 - Program Planning & Integrity
 - Quality Assurance & Improvement
 - Health Equity
 - Finance

Population Health

Division of Public Health

- Population Health & Community Services
- Infectious Disease Control
- Public Health Protection
- Laboratory Services
- Public Health Statistics and Information
- Public Health Systems, Policy & Performance
- State Epidemiologist

Division of Medicaid Services

- Clinical Operations
- Medicaid Policy
- Dental Services
- Health Care Reform
- Managed Care

DHHS 24/7 Facilities

- New Hampshire Hospital
- Glenclyff Home for the Elderly
- Sununu Youth Services Center
- Designated Receiving Facility

Human Services & Behavioral Health

Division of Economic & Housing Stability

- Family Assistance
- Employment Supports
- Housing Supports
- Child Support Services
- Child Development & Headstart Collaboration

Division of Behavioral Health

- Mental Health
- Drug & Alcohol Services
- Children's Mental Health

Division of Long Term Supports & Services

- Adult Protection Services
- Elderly & Adult Services
- Developmental Services
- Designated Receiving Facility
- Special Medical Services
- Community Based Military Programs

Division of Children, Youth & Families

- Field Services
- Family, Community & Program Support
- Organizational Learning & Quality Improvement
- Sununu Youth Services Center

Operations

Bureau of Information Services

- Data Management
- Data Warehouse
- Information Security
- Medicaid Management Information System
- DHHS Systems Oversight
- Linkage to DoIT

Bureau of Human Resource Management

- Organizational Development & Training Services

Bureau of Facilities Maintenance & Office Services

- HHS Facilities & State Office
- Safety & Wellness
- Office Services
- Oversight – Institutional Services

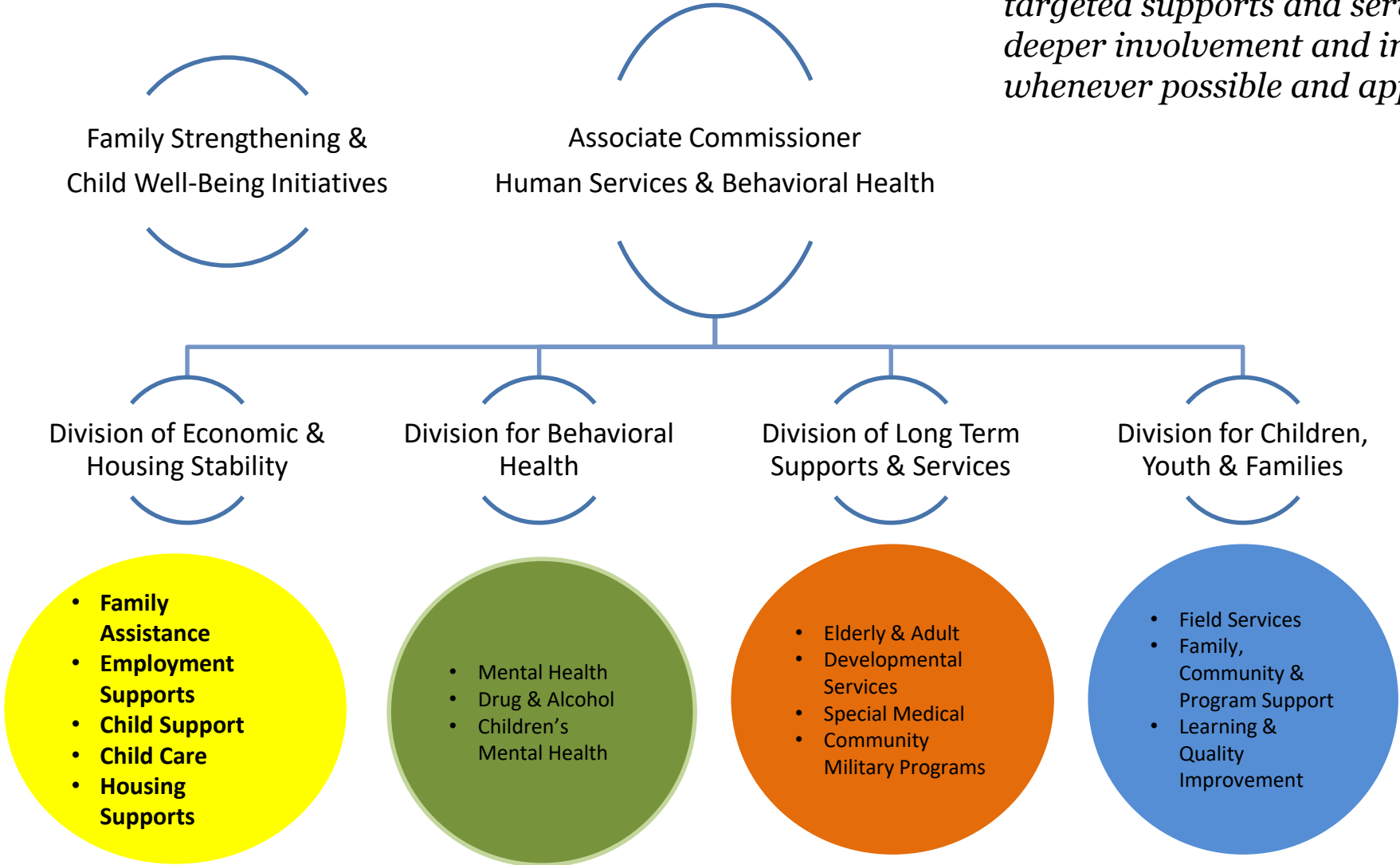
Communications Bureau

Emergency Services Unit

Employee Assistance Program

NH DHHS
Operational Area: HS & BH

**From left to right - Emphasis on rapid and holistic engagement with integrated, targeted supports and services to prevent deeper involvement and interventions whenever possible and appropriate*

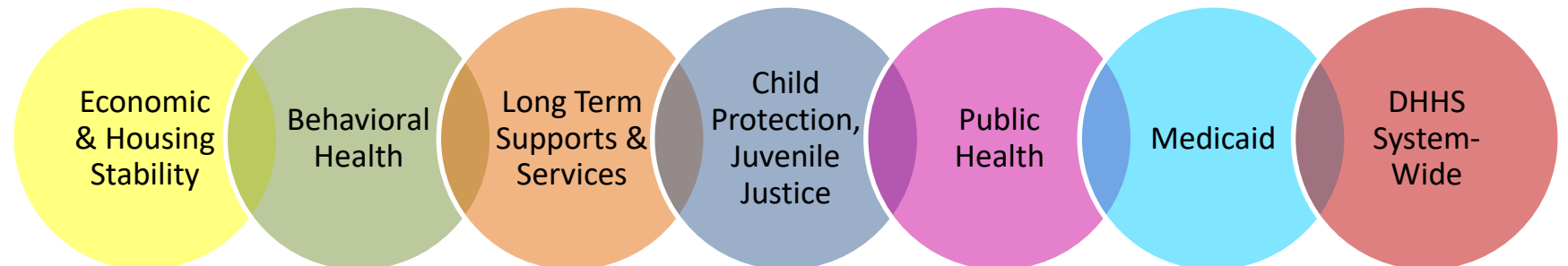


Health & Human Services Integration “Teams”



- ✓ Chartered approach
- ✓ Varied leadership and membership
- ✓ Inter and Intra organizational efforts

- ❖ Suicide Prevention
- ❖ Child Welfare Transformation
- ❖ Early Childhood
- ❖ Youth affected by caregiver substance use disorders
- ❖ Father Engagement/Parenthood
- ❖ Multi-system involved individuals
- ❖ Housing
- ❖ Data Analytics
- ❖ **Whole Families Approach to Jobs**



New Hampshire's Whole Family Team

- **Focus on...**

Parents working AND children thriving
Business needs being matched to workforce needs and creating lifetime pathways for learning

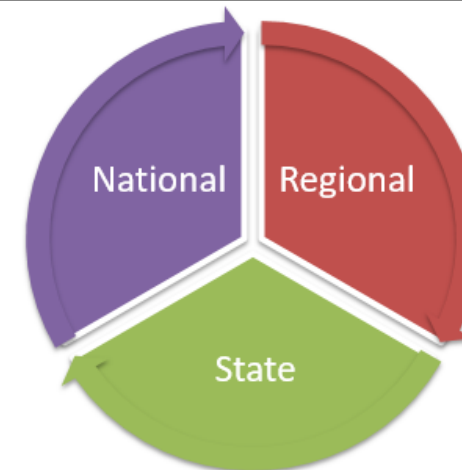
- **Cross-Sector Partnerships**

Government, business, community providers, philanthropy, legislators, higher education, and parents

- **Addressing the most difficult barriers to family self-sufficiency and well-being**

Supportive employers/recovery friendly, housing, childcare access and quality, transportation solutions, locally accessible mental health, diverse educational pathways

- US DHHS/ACF Region 1
- Other Federal Agencies - USDA
- National Conference of State Legislatures
- Technical Assistance partners
- Philanthropic partners
- Parents



Key focus areas

- Employers
- Childcare
- Transportation
- Housing

New Hampshire Whole Families Chapter

- Parents
- NH DHHS, DOE, NHES, DOT, DBEA
- Employers
- Higher Education
- Local Leaders, i.e. City Welfare and Planners
- Technical Assistance partners
- Philanthropic partners



Widen roads to self-sufficiency by closing the Cliff Effect

Governor Sununu Inaugural Address

“It won't be easy but I believe the pathway is there, and I'm calling on the Legislature to join me in tackling the issue

NH HB2 Legislation

Plan to Close the Cliff Effect for Individuals and Families who Receive Public Benefits

- Establishing the vision
- Economic analysis and model development
- Convening key partners, experts, and parents
- Designing and testing a cliff effect calculator
- Building capacity and sustainability



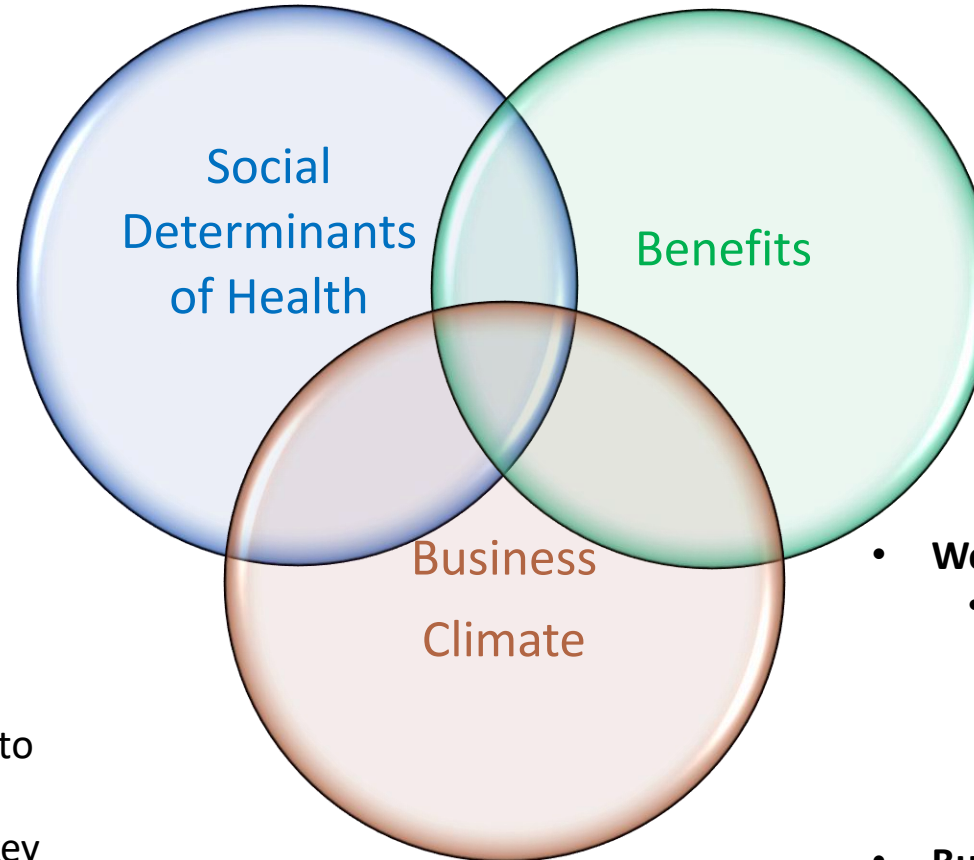
New Hampshire Economic Analysis

Key Elements

- Social Vulnerability Index
- Adverse Childhood Experiences
- Substance Use Disorders Data “Dashboard”

*DHHS – Public Health

Real life “vignettes” will be developed to illuminate regional similarities and differences across the intersection of key elements and the impact on families



- TANF
- SNAP
- Housing
- Child Care
- Transportation
- Healthcare
- Child Support
- WIC/School Lunches
- Energy/Fuel Assistance

*NH DHHS DEHS

- Workforce
 - Employment Supports to promote movement towards high demand labor market jobs with geographic overlay - educational/training pathways
- Business Environment

*NHES ELMI

Leveraging all efforts to promote whole family approaches

- ❖ Integrating and connecting our “our collective efforts” – across policies, programs, services and partnerships
 - Listening to stakeholders – particularly those with lived experiences
 - Refreshing and modernizing DHHS structure and partnerships
 - Using the **Social Determinants of Health** as the foundation of alignment and integration across ALL department efforts



- Prioritizing Early Childhood and Community Based Efforts
- Transforming our Child Welfare System
- Creating a 10 Year Mental Health Plan
- Designing a “State” Opioid Response system
- Strengthening Granite Advantage and Workforce
- Establishing a Whole Family Approach to Jobs: Parents Working, Children Thriving Initiative



In NH, we aspire for all families to...LIVE FREE AND THRIVE!!

