

What is the Future of Mobility?

- Moderator:
 - **Garrett Eucalitto**, Transportation Program Director, National Governors Association
- Speakers:
 - **Jennifer Cohan**, Secretary, Delaware Department of Transportation
 - **Sarah Kaufman**, Associate Director, Rudin Center, New York University
 - **J. Bryan Nicol**, Managing Director, Infrastructure and Capital Projects, Deloitte

NGA Transportation Workshop “What is the future of Mobility”

Jennifer Cohan
Secretary, Delaware
Department of Transportation



MoD - Mobility on Demand



MoD - Mobility on Demand



MoD - Mobility on Demand



MoD - Mobility on Demand



MaaS - Mobility as a Service



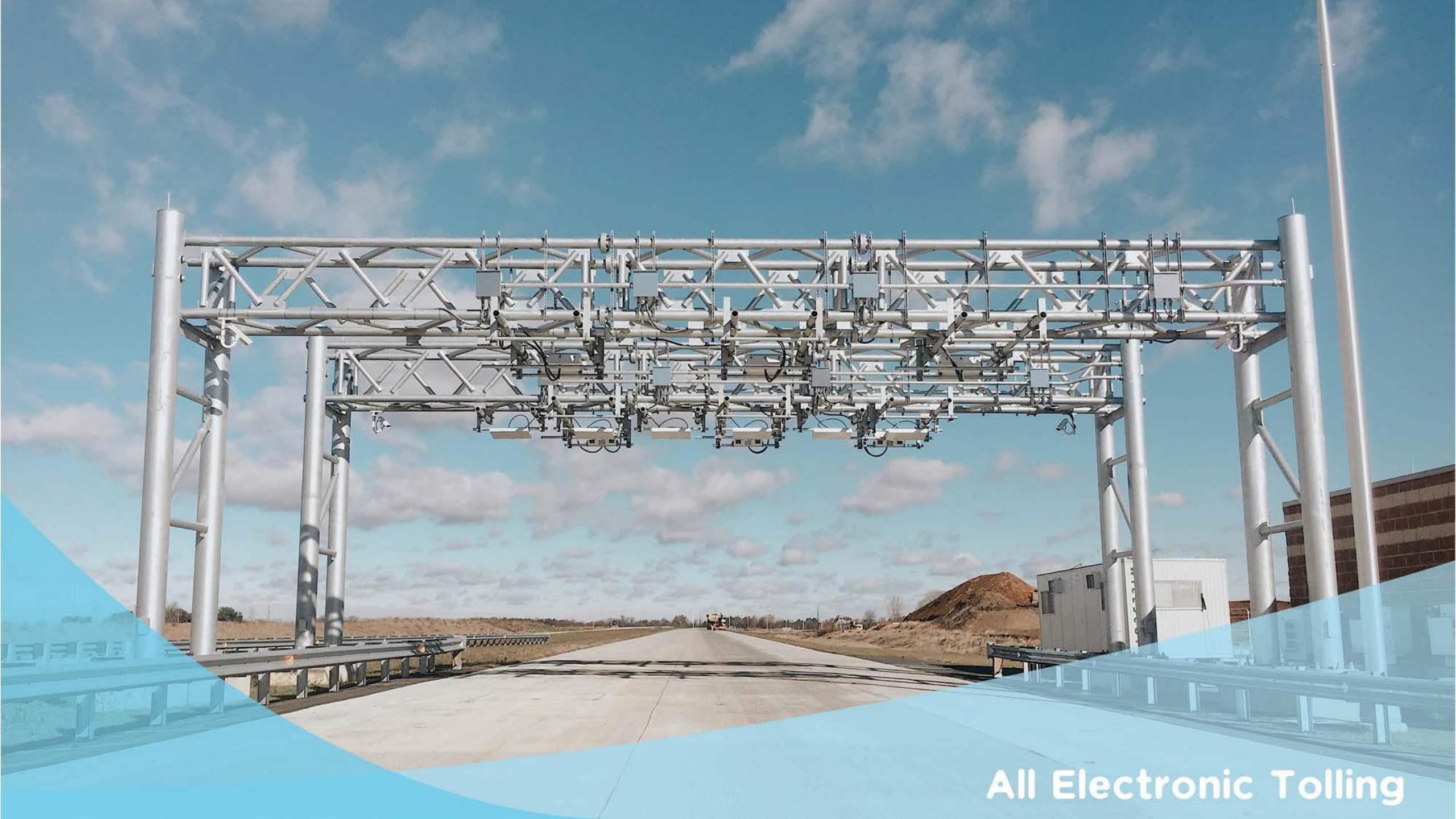
MaaS - Mobility as a Service



MaaS - Mobility as a Service



MaaS - Mobility as a Service



All Electronic Tolling



DART

Delaware Transit Corporation

BATTERY INSIDE

EMERGENCY

MaaR - Mobility as a Right



MaaR - Mobility as a Right



DMV Self-Service Kiosk

Digital Identity

Mobile Driver License



Digital Identity



The Future of Mobility

Sarah M. Kaufman

National Governors Association



Transportation During and After Hurricane Sandy



L Train Closure and Mitigation

Mitchell L. Moss, Sarah M. Kaufman, Jorge Hernandez, Sam Levy

NYU Rudin Center for Transportation

August 2016



The Pink Tax on Transportation

NYU WAGNER
rudin center
for transportation policy & management

Mobility, Economic Opportunity and New York City Neighborhoods

Sarah M. Kaufman, Mitchell L. Moss,
Jorge Hernandez and Justin Tyndall

Updated November 2015

Citi Bike: The First Two Years



Sarah M. Kaufman, Lily Gordon-Koven,
Nolan Levenson and Mitchell L. Moss

NYU WAGNER
rudin center
for transportation policy & management

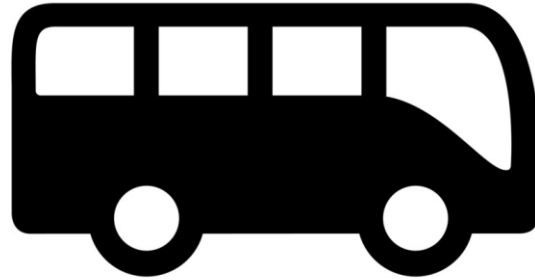
June 2015

with support from
THE ROCKEFELLER
FOUNDATION
Google

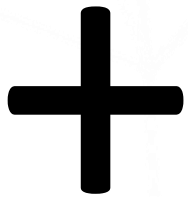
Mobility Trends

The background of the slide is a gradient from dark blue on the left to a lighter teal/green on the right. Overlaid on this gradient are several abstract, white geometric patterns. These patterns consist of interconnected lines and dots, forming a network-like structure that resembles a molecular model or a complex data visualization. The lines are thin and white, while the dots are small white circles. The overall aesthetic is modern and technological.

Trend 1: Multimodalism



20th c.
Modes

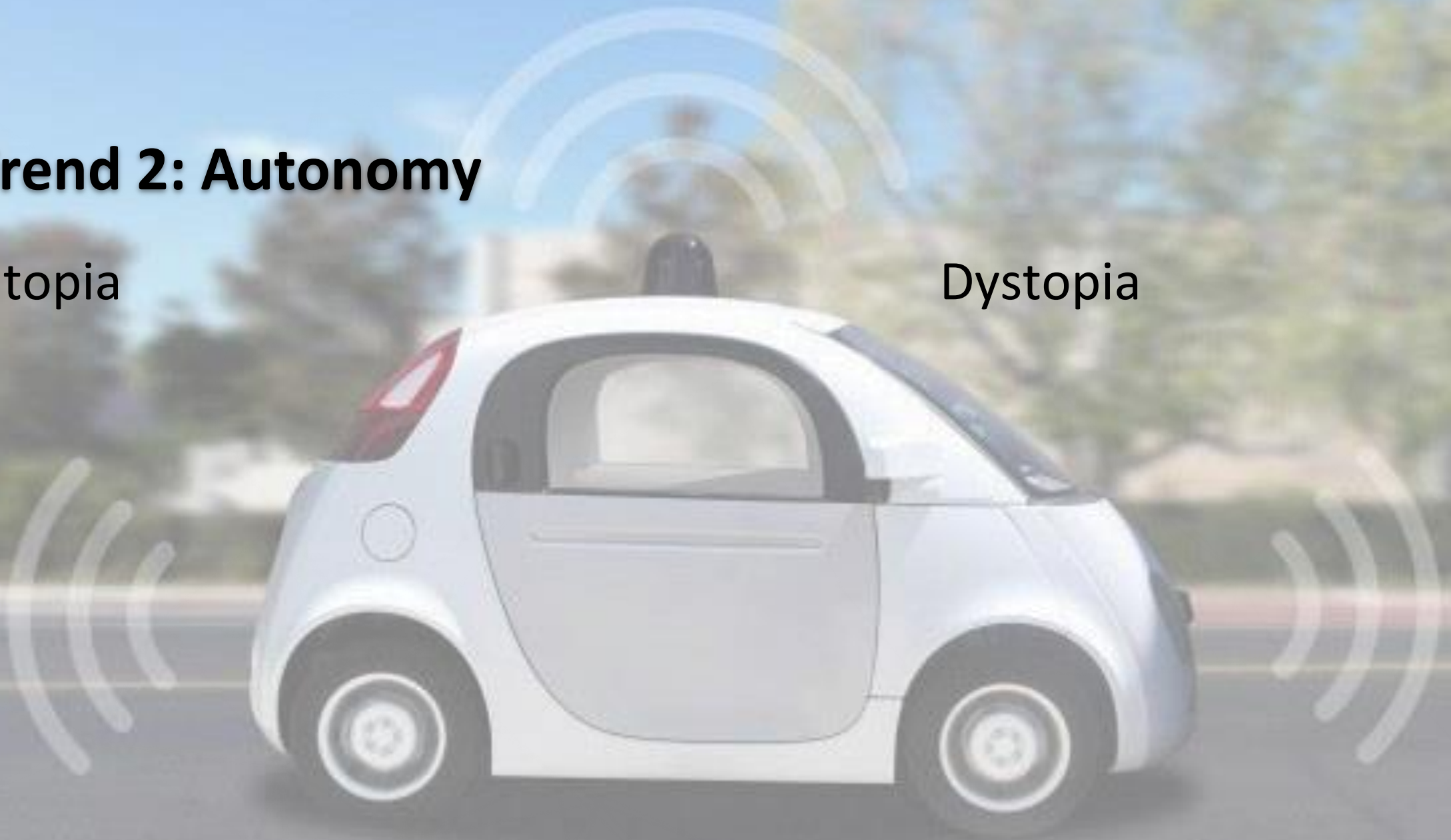


21st c.
Modes

Trend 2: Autonomy

Utopia

Dystopia



Trend 3: Aging Boomers



Photo: Philippe Leone



Building a Smart, Inclusive Future

Data Privacy





The Pink Tax on Transportation: Women's Challenges in Mobility

NYU | WAGNER
rudin
center
for transportation policy & management

C2SMART
CONNECTED CITIES WITH
SMART TRANSPORTATION



What is the future of mobility YOU want to create?

Sarah Kaufman ~ www.NYURudinCenter.com ~ @sarstar