

Prioritize for Progress: Changing How States Rack and Stack Projects

▶ Moderator:

▶ **Brandye Hendrickson**, Deputy Director, AASHTO

▶ Speakers:

▶ **Nick Donohue**, Deputy Secretary of Transportation, Commonwealth of Virginia

▶ **Ed Sniffen**, Deputy Director for Highways, Hawaii Department of Transportation

▶ **Beth Osborne**, Director, Transportation for America



#WeTheStates



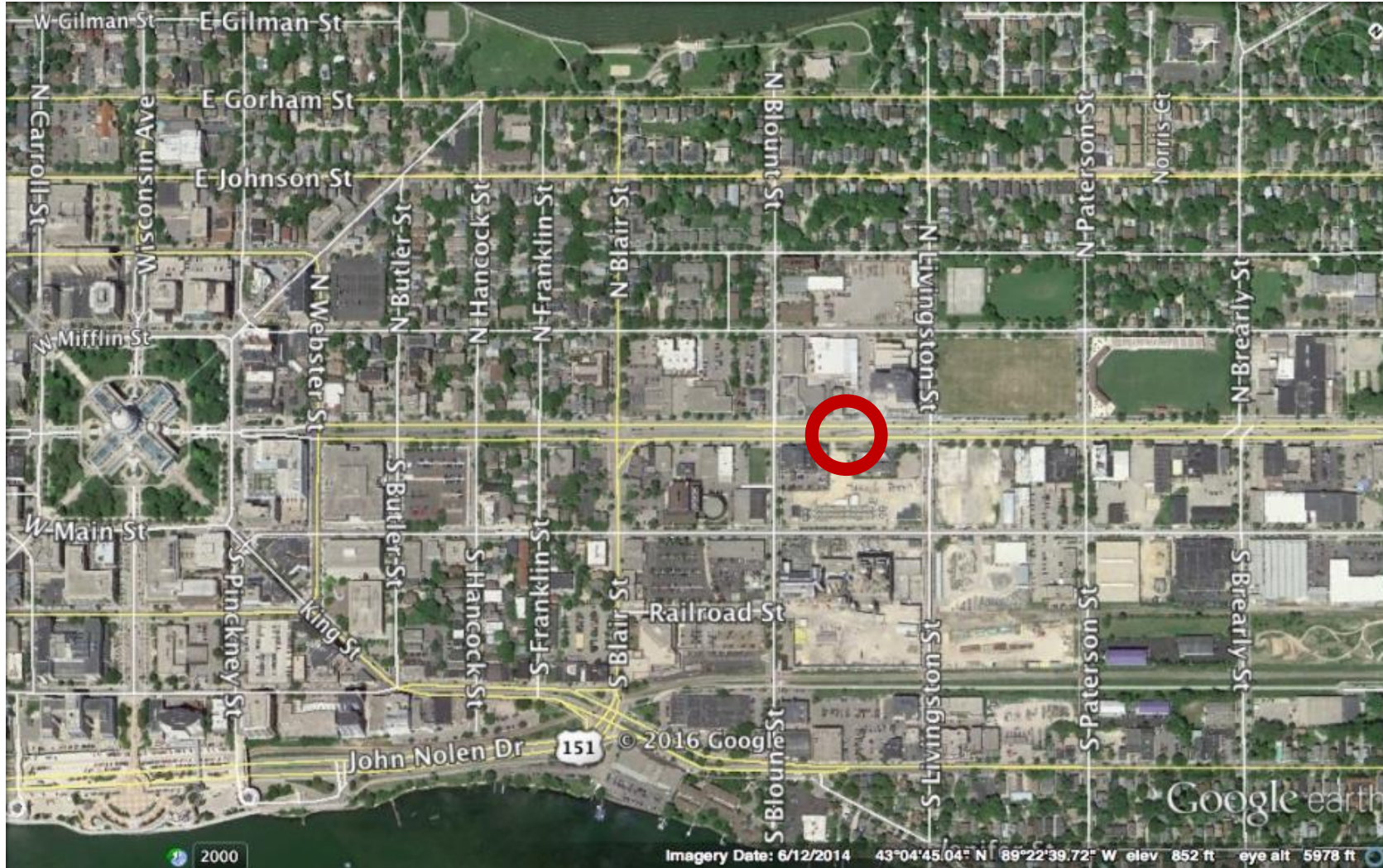
State
Smart Transportation
Initiative



Destination accessibility

A tool for transportation decision-making

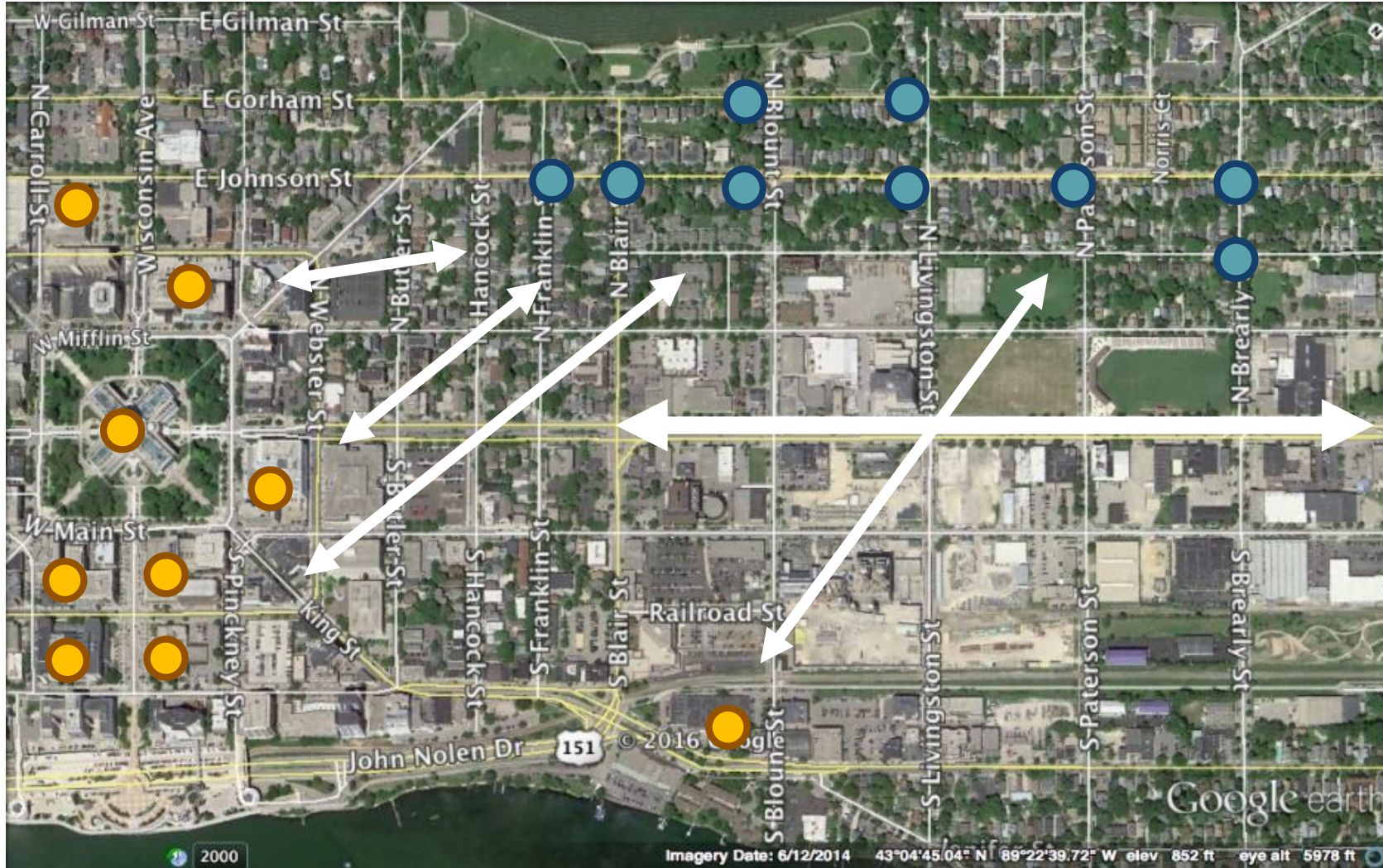
Why measure destination access?



Mobility measures

- Travel speed
- Level of service
- Vehicle throughput
- Person throughput

Why measure destination access?

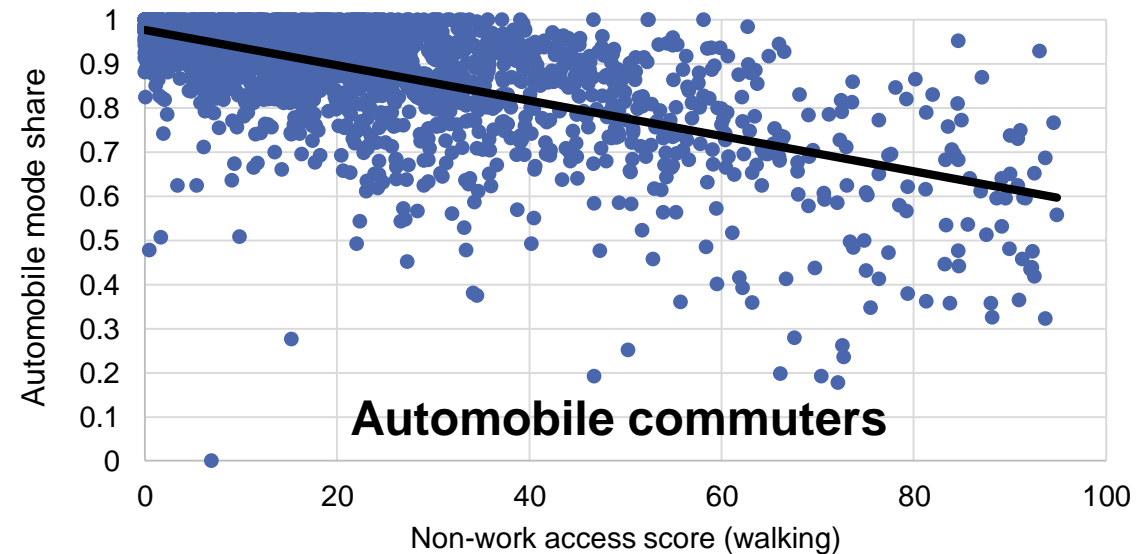
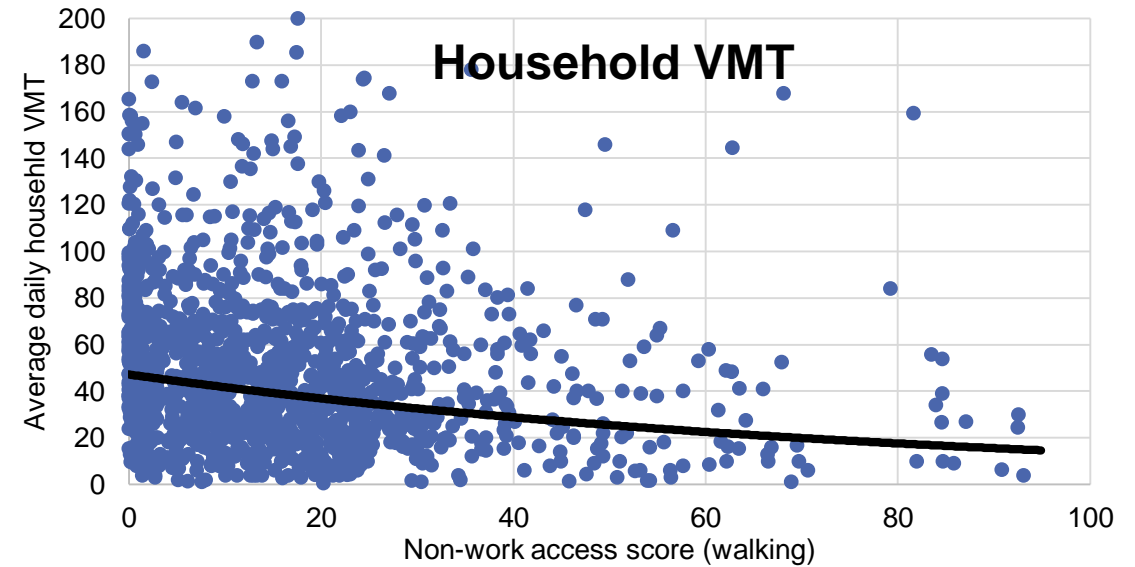
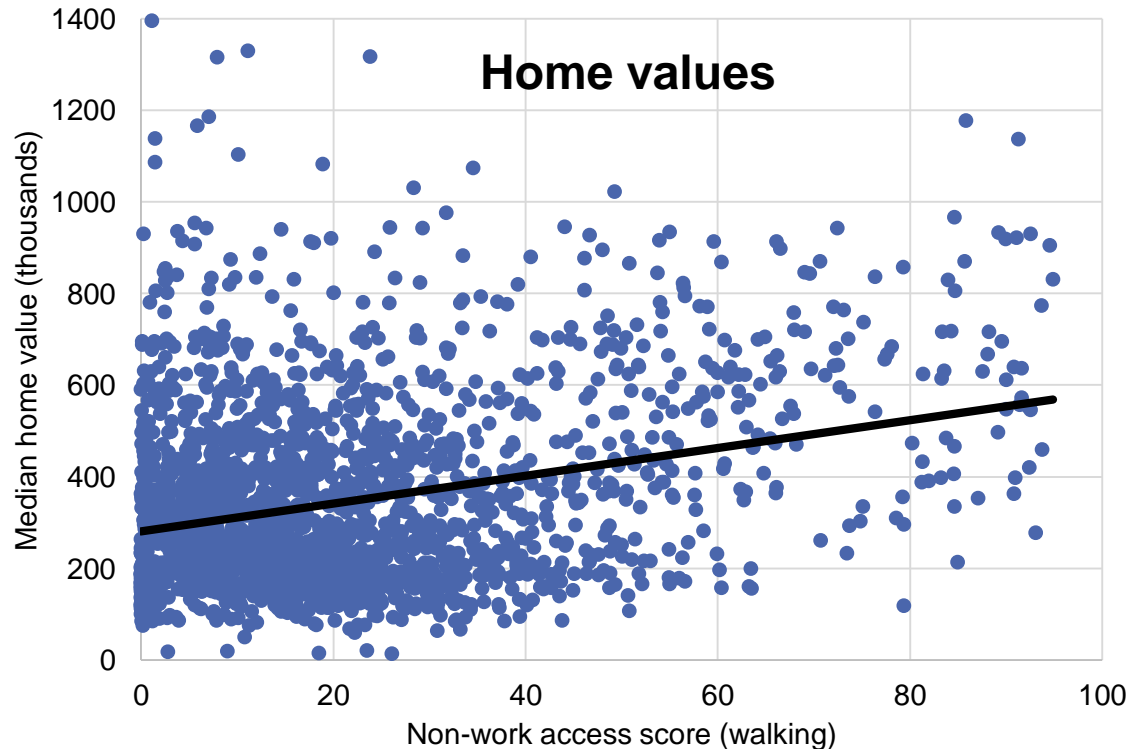


Accessibility measures

- Origins
- Destinations
- Ability to travel between them

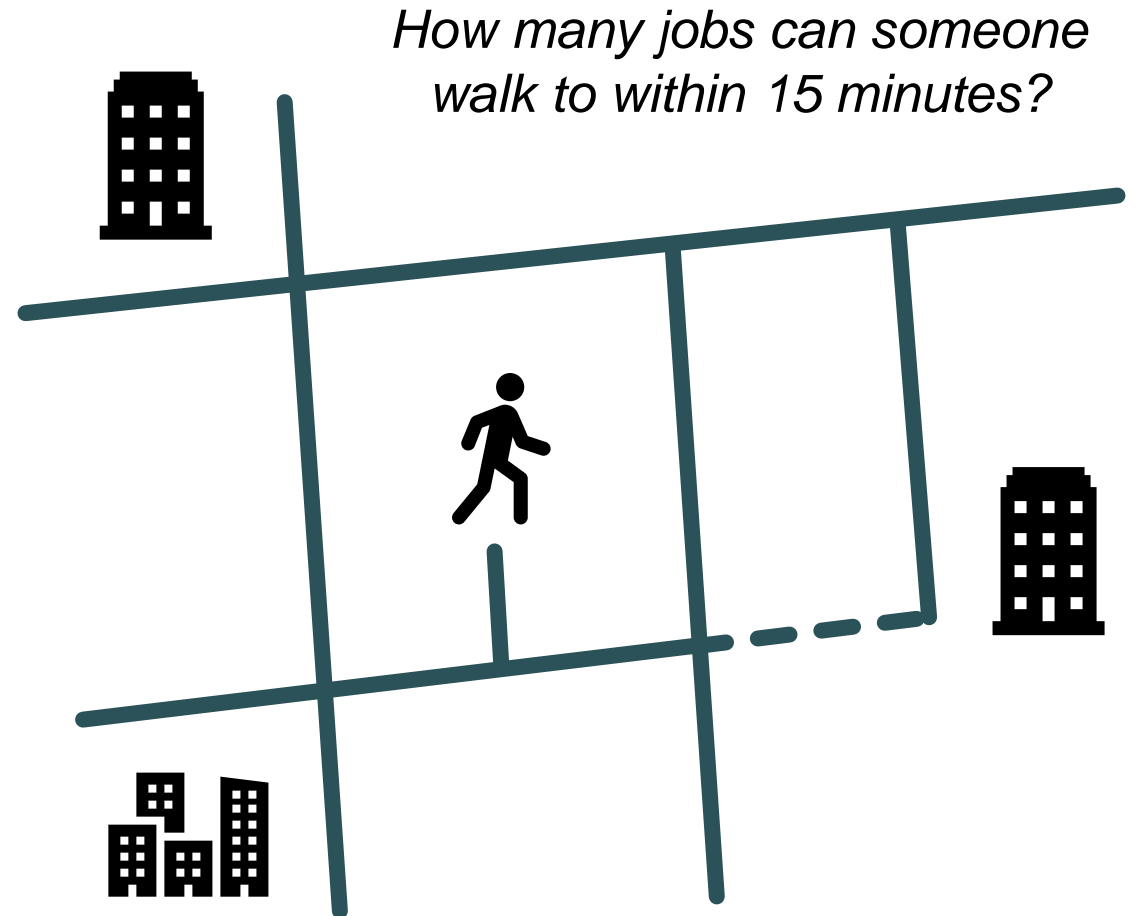
Related outcomes

Greater accessibility is associated with lower travel demand and greater economic value.

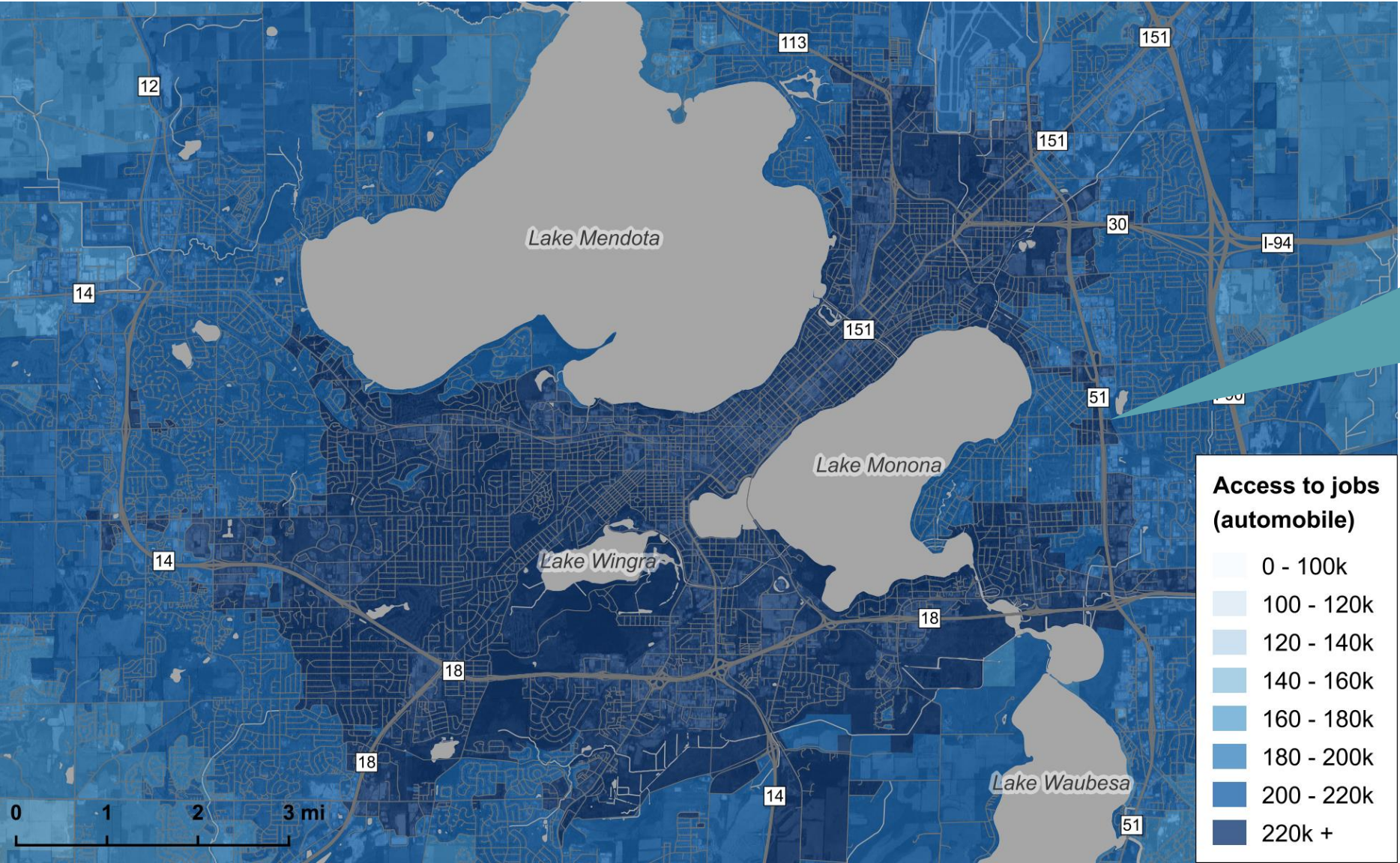


Measuring accessibility

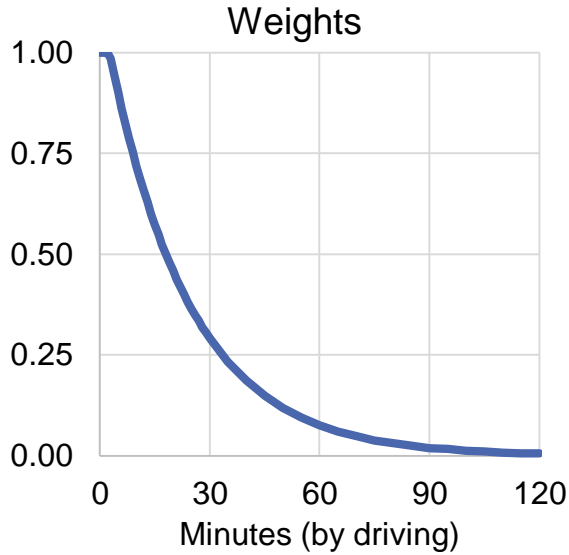
1. Information about transportation networks
2. Information about opportunities
3. Method of calculation
4. Applications in decision-making



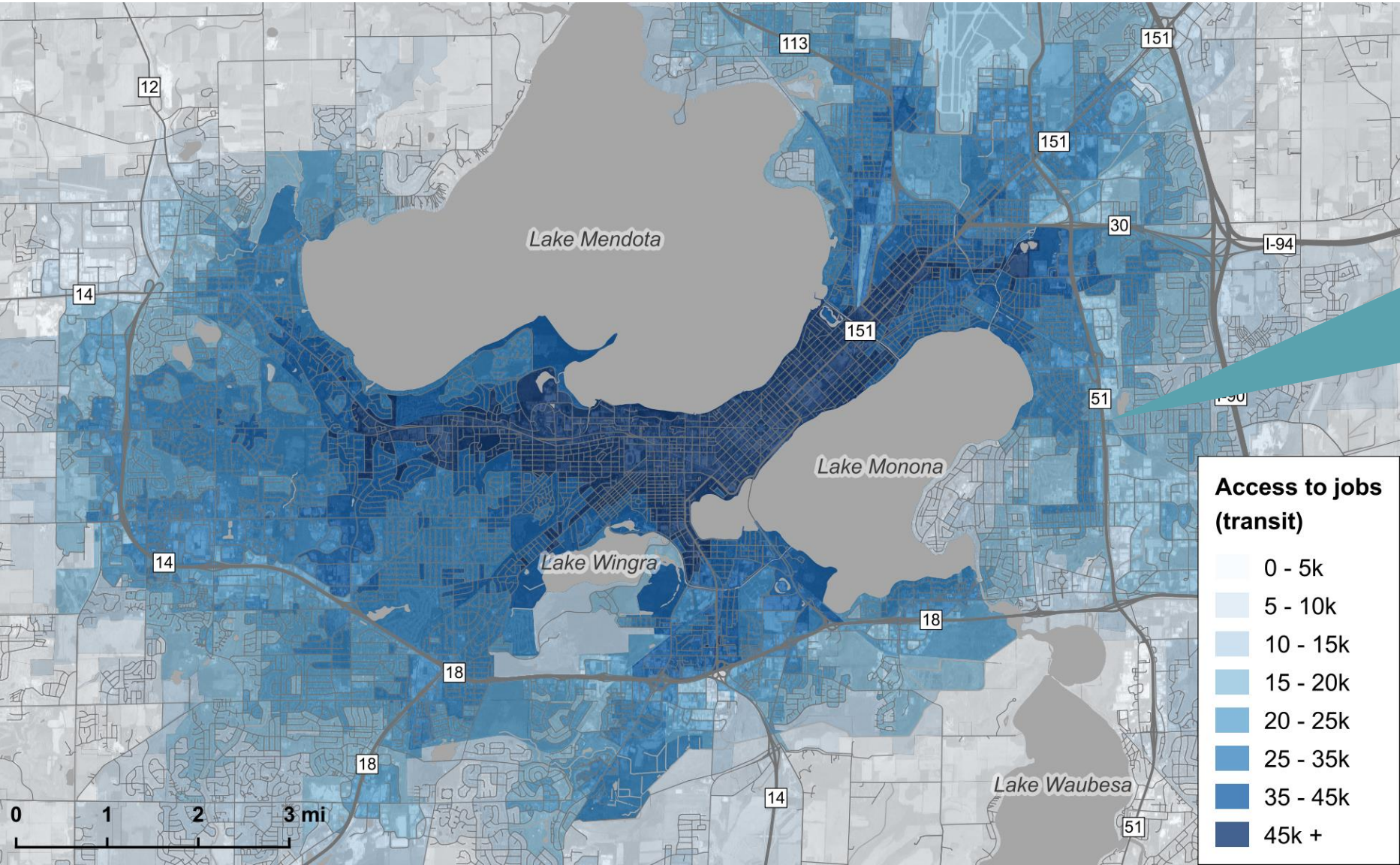
Access to jobs by driving (morning)



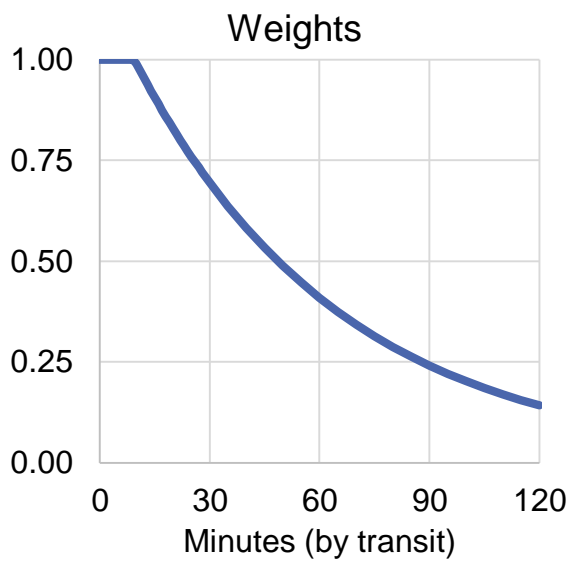
Jobs accessible	
< 15 min	29,000
< 30 min	293,000
< 45 min	308,000
Weighted	212,000



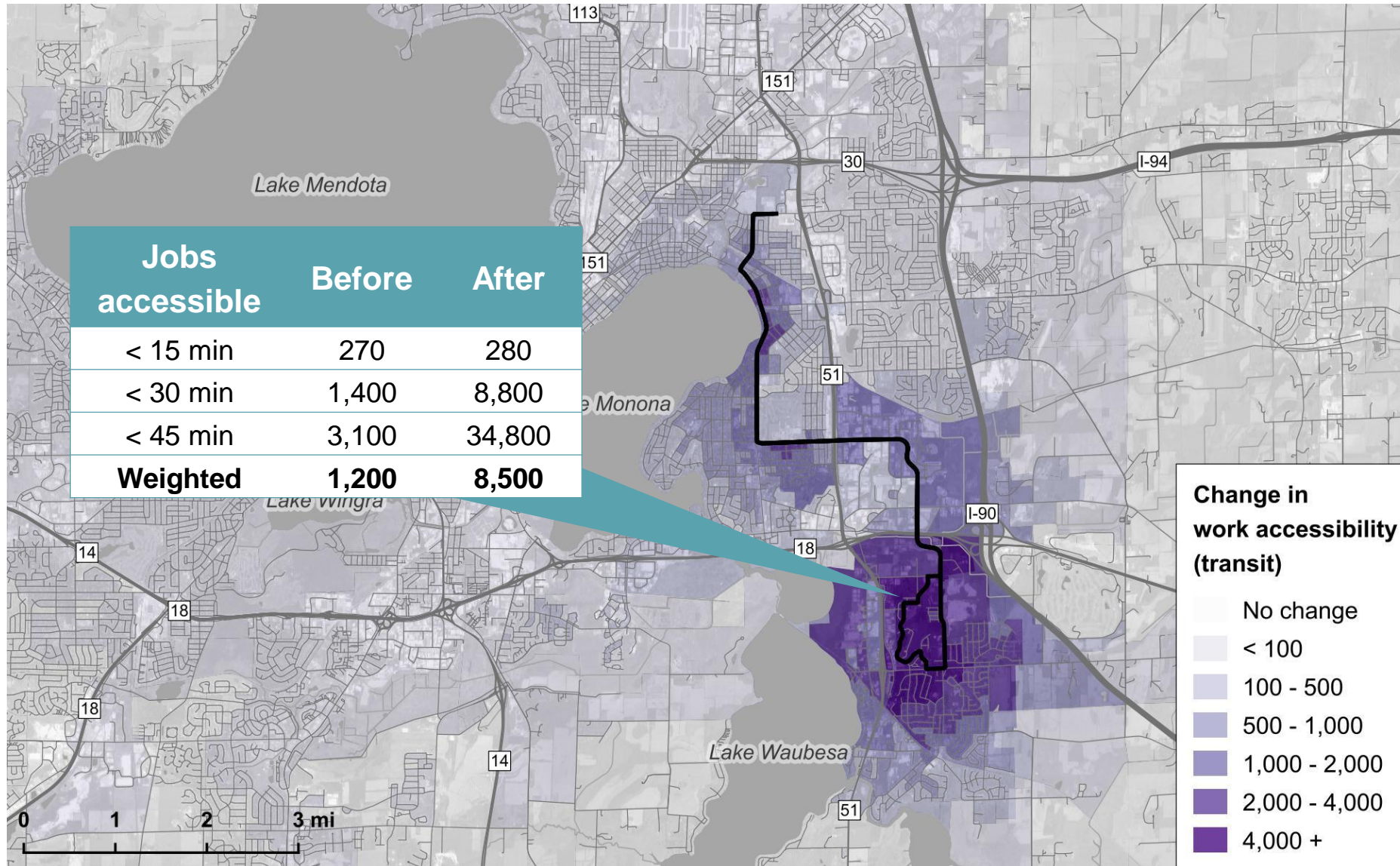
Access to jobs by transit



Jobs accessible	
< 15 min	250
< 30 min	24,000
< 45 min	33,000
Weighted	18,000



Project evaluation: New bus line



Total impact

- 1.03 million household-jobs

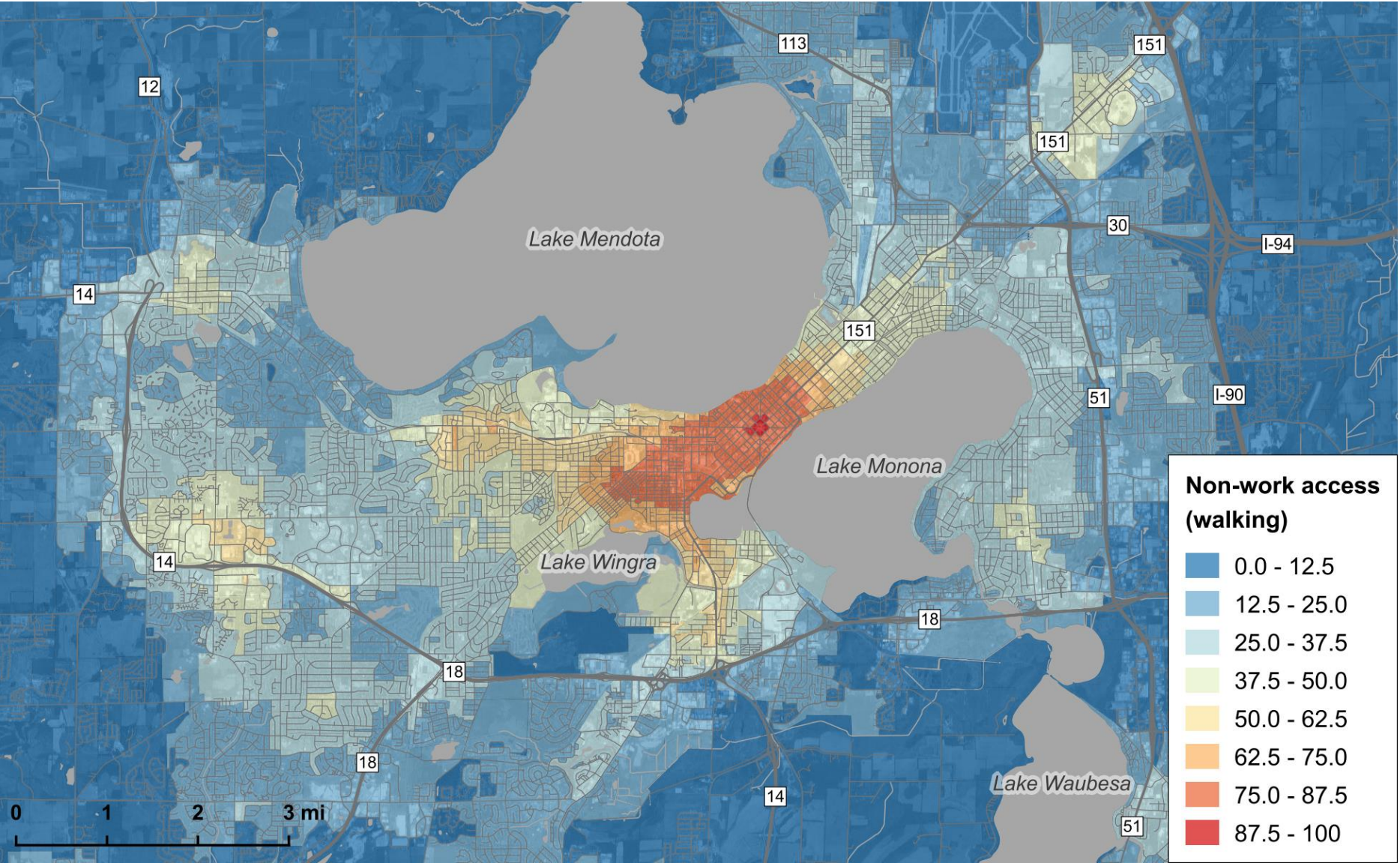
Average impact

- 5 jobs
- Across 200,000 households

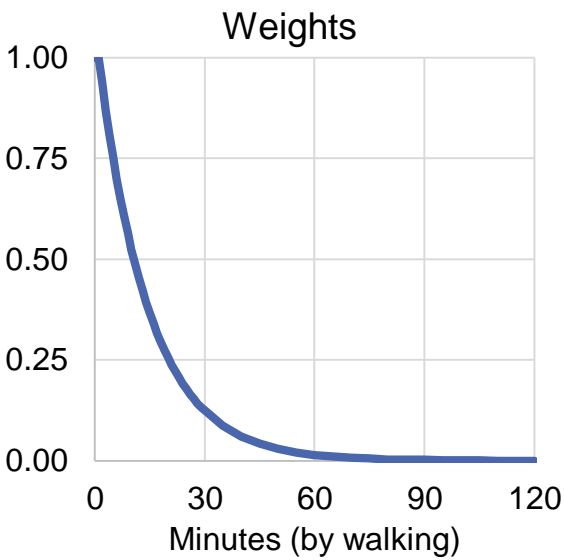
Related impacts

- Mode share and VMT
- Transit ridership
- Active transportation
- Land values

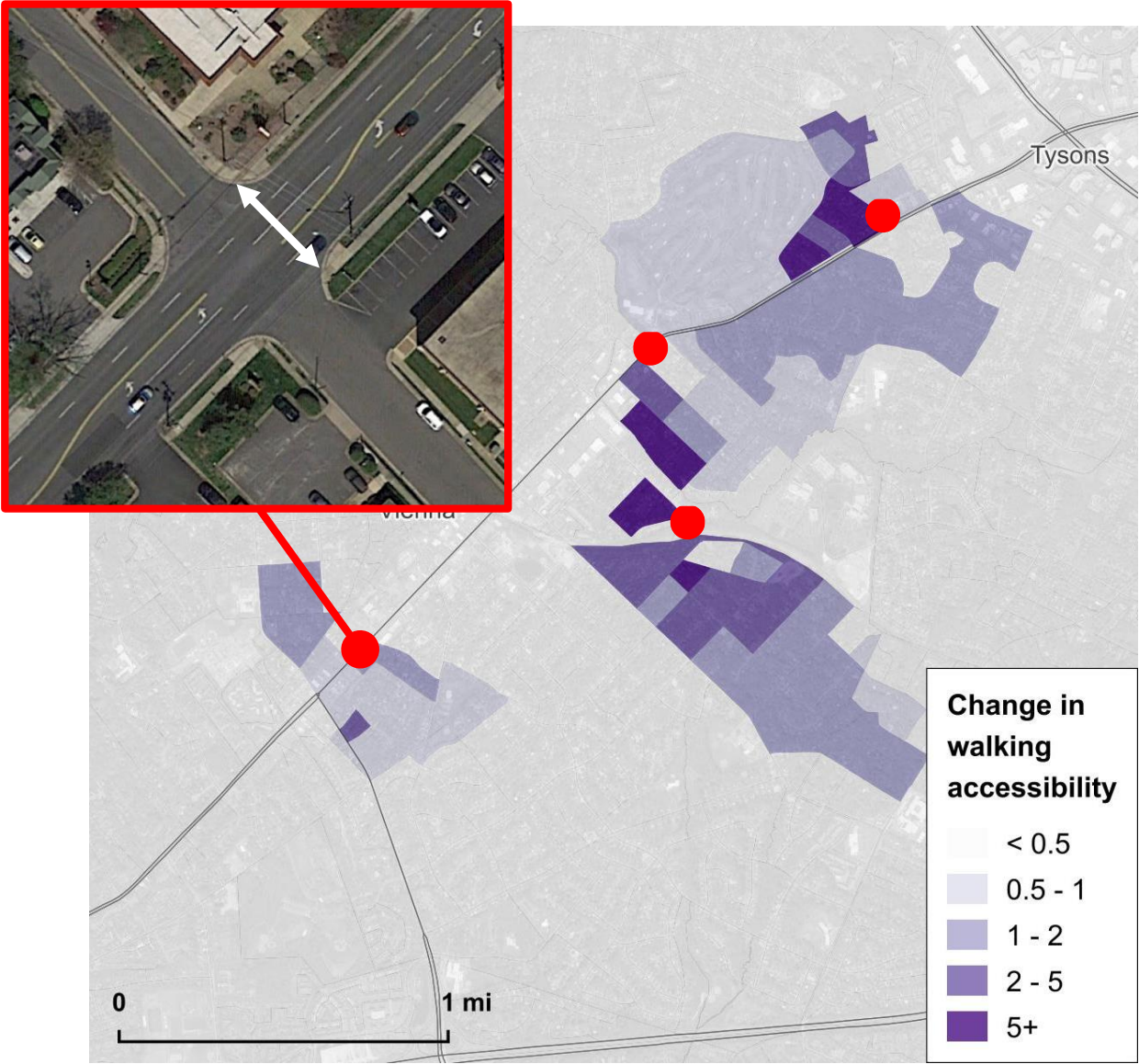
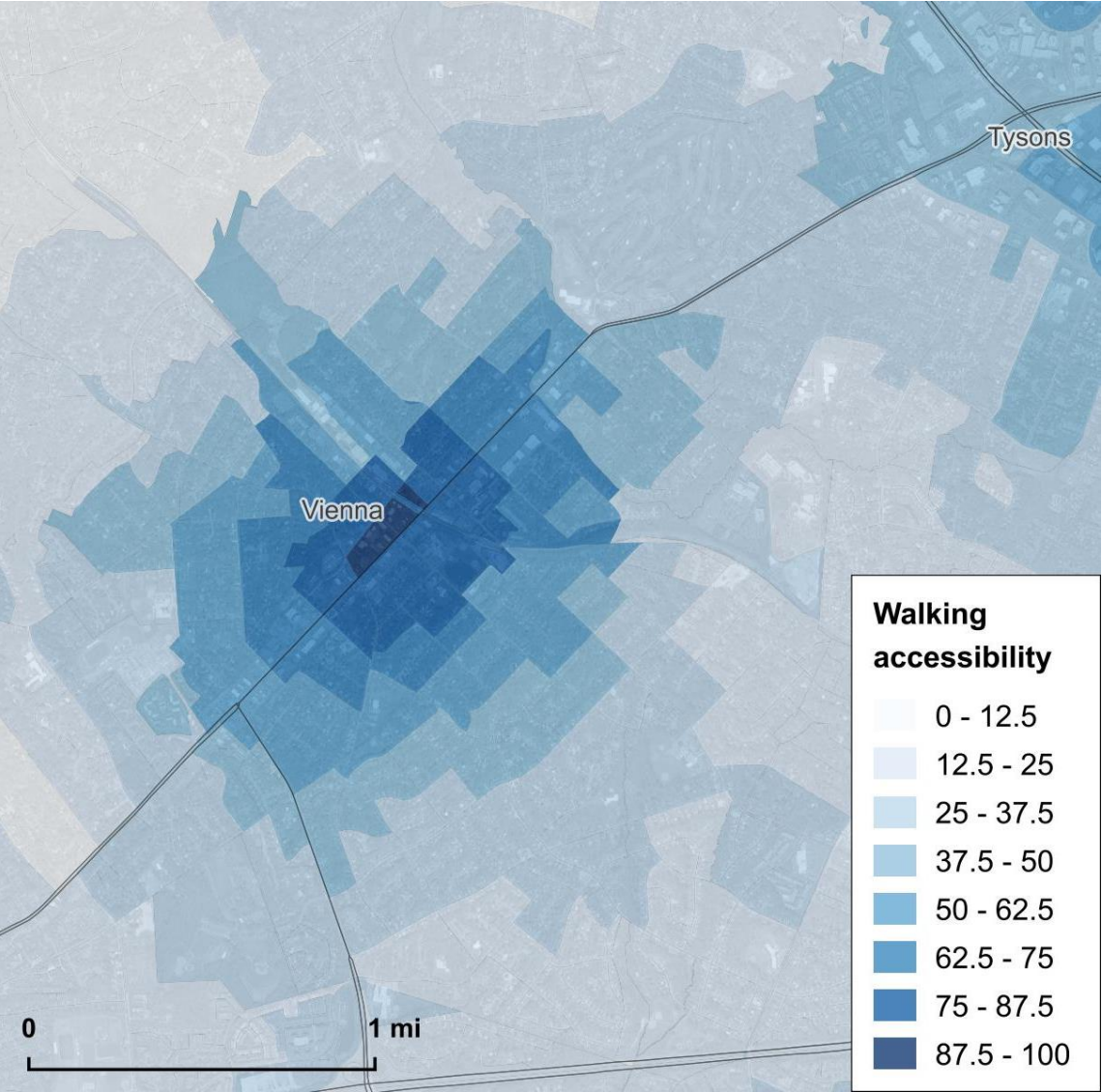
Access to destinations by walking



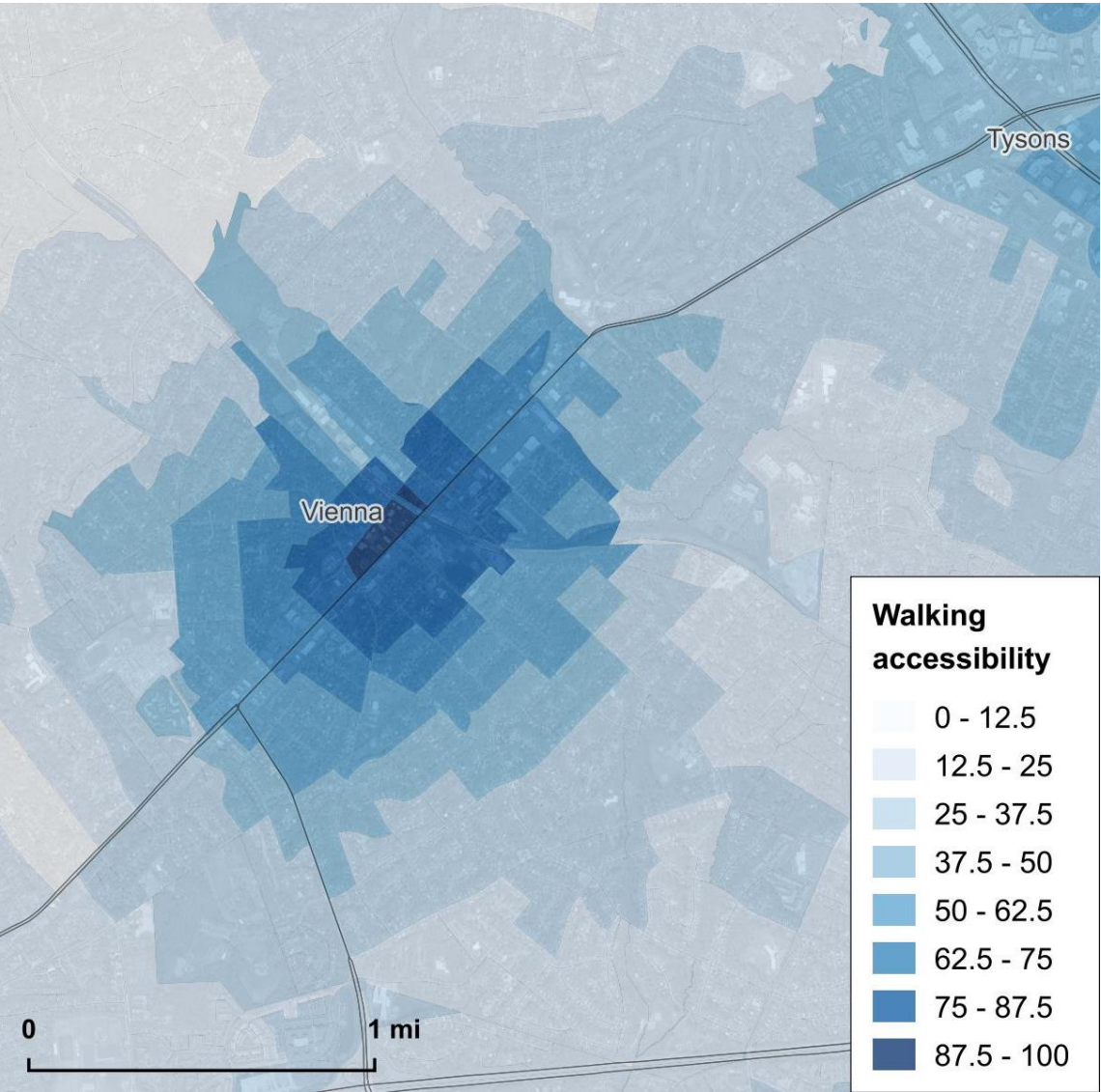
- Access to:**
- Schools
 - Shopping
 - Entertainment
 - Grocery stores
 - Food and drink
 - Recreation
 - Healthcare
 - Public services
 - Banks and ATMs



Project assessment: Pedestrian improvements



Project assessment: Mixed-use development



Applications in decision-making

Scan
conditions

Diagnose
problems

Assess
solutions

Engage
stakeholders

Track
performance

Predict
outcomes



Prioritize for Progress: Changing How States Rack and Stack Projects

▶ Moderator:

▶ **Brandye Hendrickson**, Deputy Director, AASHTO

▶ Speakers:

▶ **Nick Donohue**, Deputy Secretary of Transportation, Commonwealth of Virginia

▶ **Ed Sniffen**, Deputy Director for Highways, Hawaii Department of Transportation

▶ **Beth Osborne**, Director, Transportation for America



#WeTheStates