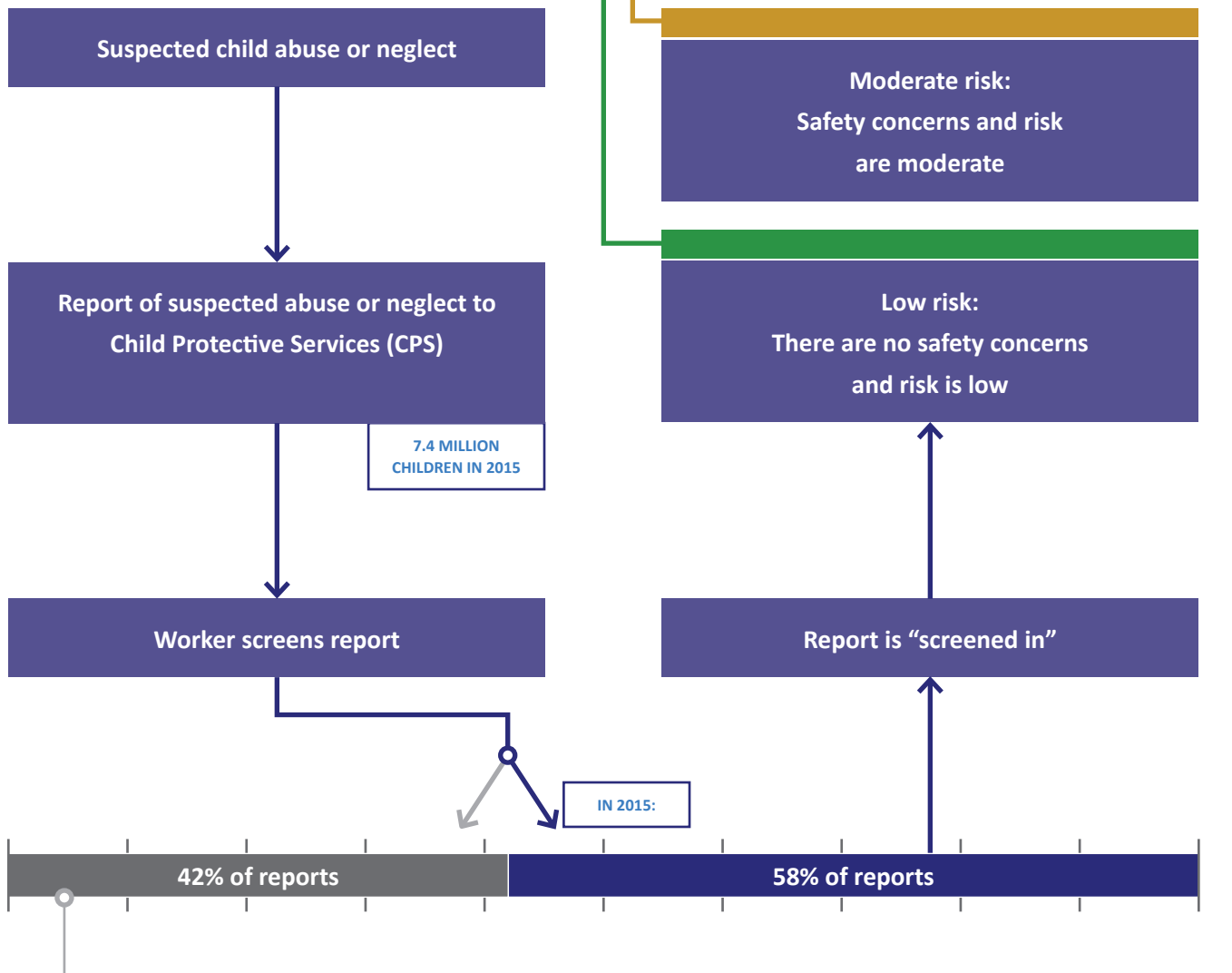


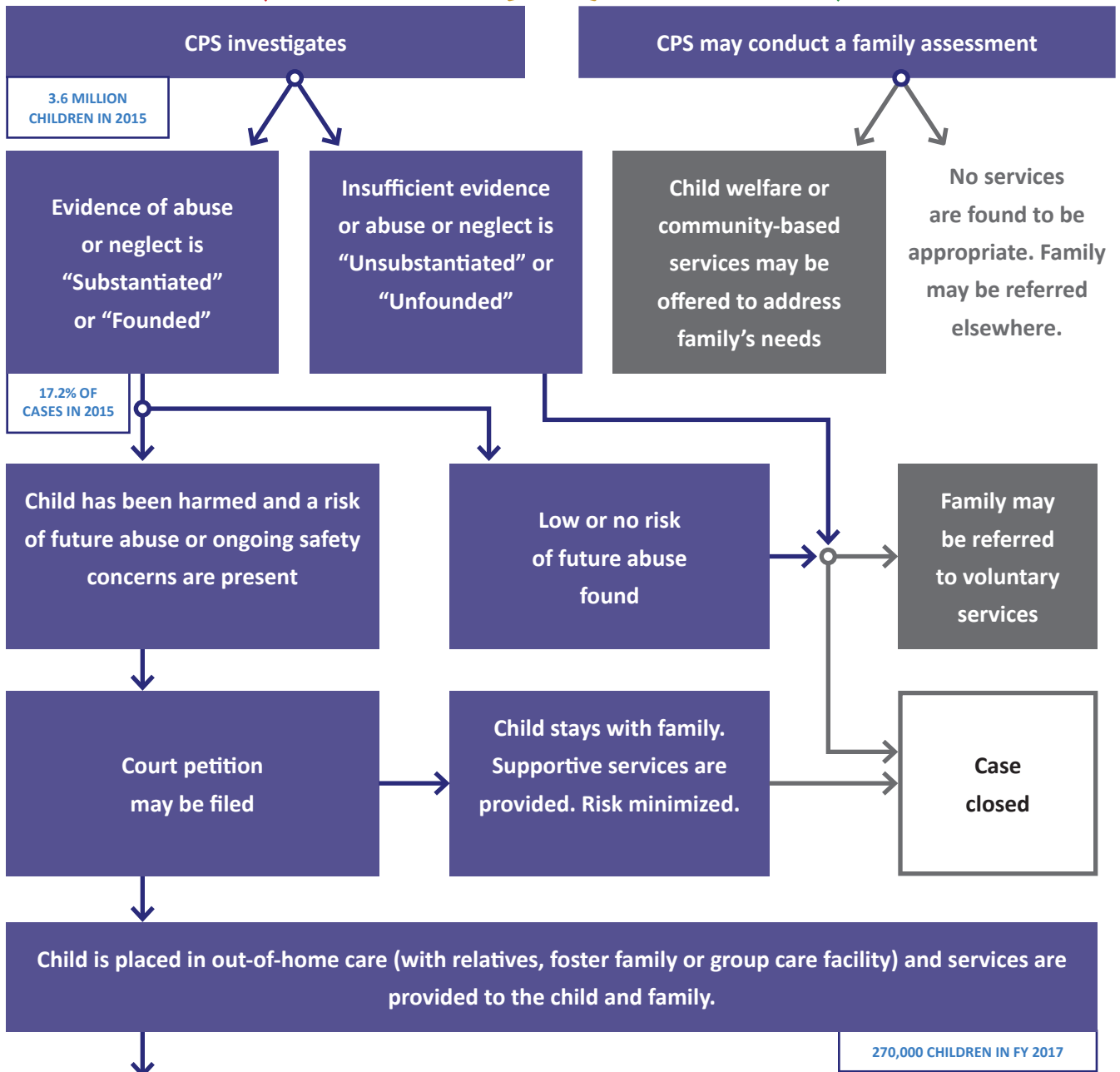
APPENDIX I

# A child's journey through the child-welfare system



Report is "screened out": Situation does not meet the state's definition of maltreatment, or too little information is supplied. Caller may be referred to supportive services.

Data from AFCARS Report #25 and Child Maltreatment 2016 from the Children's Bureau of the U.S. Department of Human Services Administration for Children and Families



Outcomes for children in FY 2017

