

Environmental Management (EM) Nevada Program Activities at the NNSS



Rob Boehlecke

Program Manager

DOE EM Nevada Program

November 20, 2019



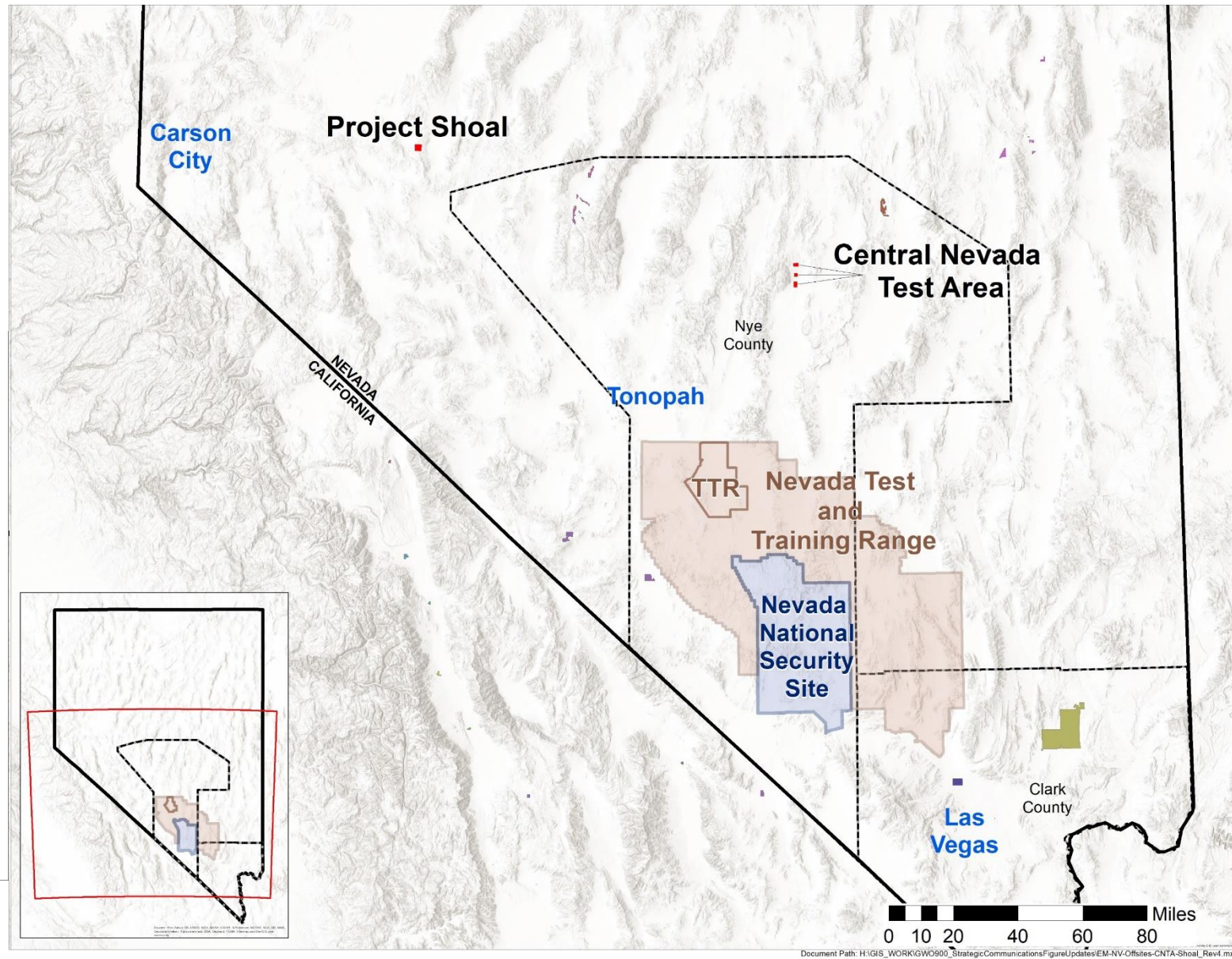
EM *Environmental Management*

safety ❖ performance ❖ cleanup ❖ closure

www.nnss.gov

Consolidated Group of Tribes and Organizations

- Benton Paiute Reservation
- Big Pine Reservation
- Bishop Reservation
- Chemehuevi Reservation
- Colorado River Indian Reservation
- Duckwater Reservation
- Ely Reservation
- Fort Independence Reservation
- Kaibab Indian Reservation
- Las Vegas Indian Colony
- Lone Pine Reservation
- Moapa River Indian Reservation
- Timbi-Sha Shoshone Reservation
- Yomba Reservation



EM Environmental Management

safety ❖ performance ❖ cleanup ❖ closure

www.nnss.gov

EM Nevada Program Overview

- Environmental corrective actions: 3,000+ sites on the Nevada National Security Site (NNSS) and the Tonopah Test Range (TTR)
 - Baseline for completion is 2030 but acceleration is anticipated
 - Work conducted under the Federal Facility Agreement and Consent Order (FFACO)
 - Facilities: D&D of two historic nuclear test facilities remain (99% complete)
 - Soils: All physical work completed and one closure report remains (99% complete)
 - Groundwater: One of the four groundwater characterization areas transitioned into long-term monitoring and another two close behind
- Waste disposal: waste generated by cleanup at sites involved in nuclear research, development and testing, and ongoing national security and science missions
 - Need for disposal locations goes beyond environmental corrective action baseline
 - Disposal area will remain the responsibility of DOE in perpetuity
 - Responsible agency for future operation of the facility to be determined



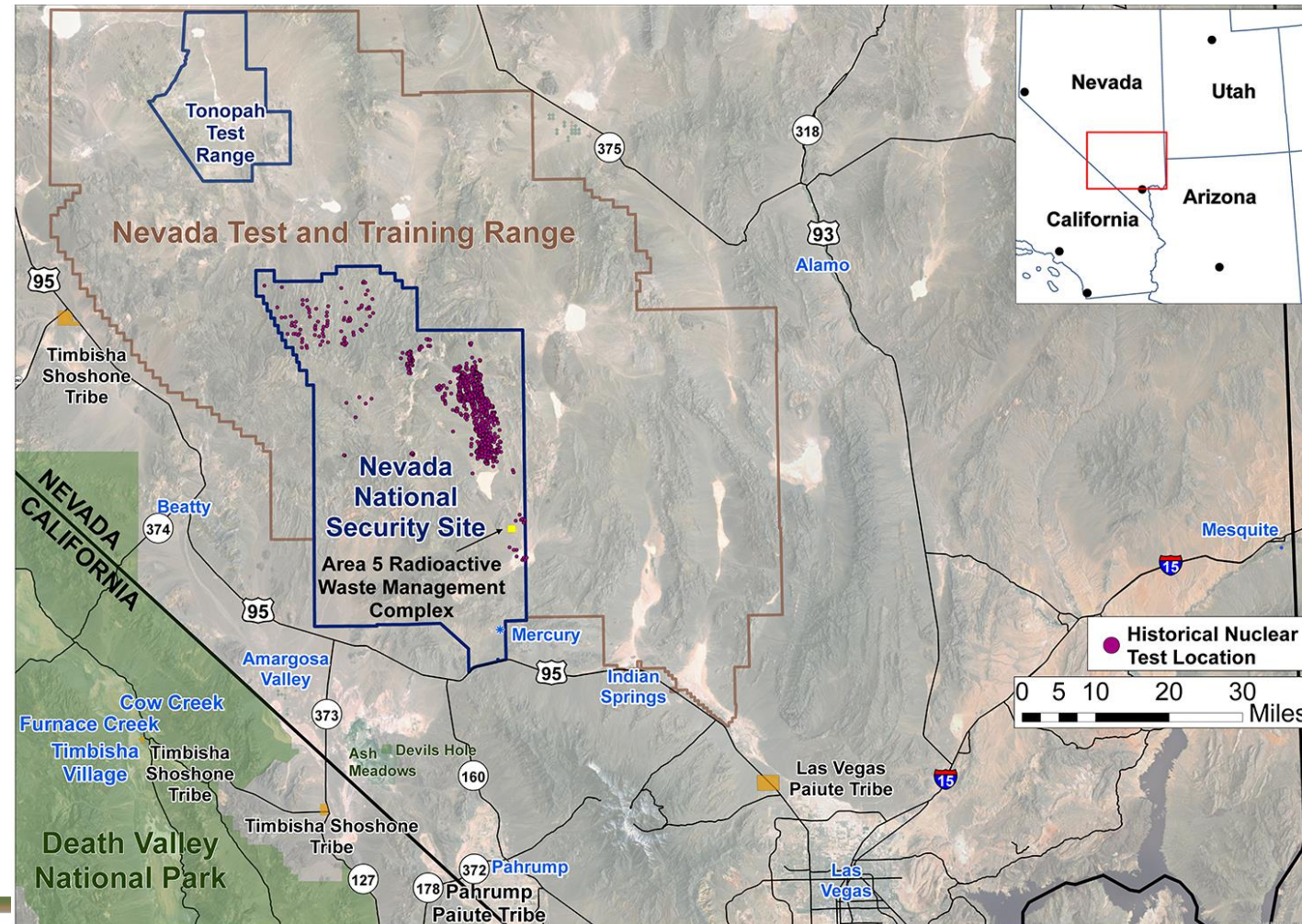
EM *Environmental Management*

safety ❖ performance ❖ cleanup ❖ closure

www.nnss.gov

EM Nevada Program Future

- TTR sites will be transferred to Office of Legacy Management by September 2020
- NNSS sites are planned for eventual transfer to the National Nuclear Security Administration (NNSA) for long-term stewardship



Document Path: K:\Public-Affairs\Public Affairs Common\MXD Maps\NNSSLocationMapArea5RWMSwTests_LndscpWM2019.mxd



EM Environmental Management

safety ❖ performance ❖ cleanup ❖ closure

www.nnss.gov