



## Convention Center Rooms

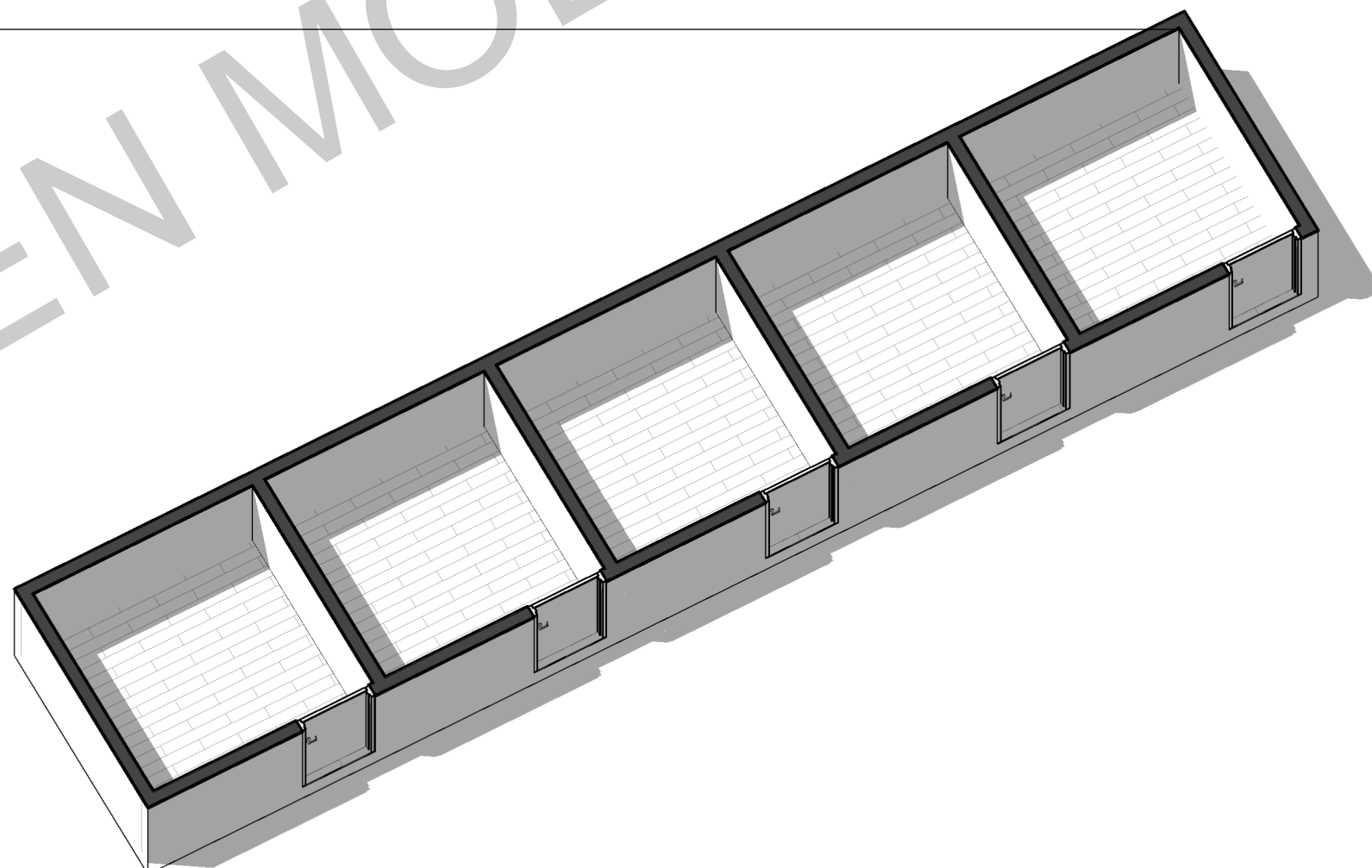
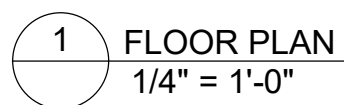
- **Convert units to multi-family housing when the crisis is over.**
- **Slide them right into a convention center or open-room facility**
- A single module consists of five, six, or seven connected rooms
  - Five room, 11'x52' module \$27,500
  - Six room, 11'x65' module \$33,000
  - Seven room, 11'x75' module \$38,000
  - All modules F.O.B. our factory
- Internal room dimensions of 10 x 10'
- Surface mount lighting and electrical fixtures
- Electrical wired to central J box
- Vinyl flooring
- Manufactured out of high-grade SPF lumber with 2x6 exterior walls.
- Gypsum walls covered with FRP on internal walls and ceiling for easy cleaning
- Zip material on outside wall
- 23/32 OSB outer roof
- Port for central exhaust (supplied by others)
- Corner fan to circulate facility air (non-conditioned)
- Metal door with window
- Re-purpose units to apartments after crisis by adding code-required ADA units.
- Finished surfaces are easy-to-clean and sanitize; including the walls, floors, and ceilings
- Exterior walls will be framed for future window installation
- Kitchen and bathroom modules available for future re-purposing
- Can be shrink-wrapped and stored for future use.

Full, turnkey hospital solutions also available. Email [emergency@bestgen.com](mailto:emergency@bestgen.com) or call 605-718-1001.

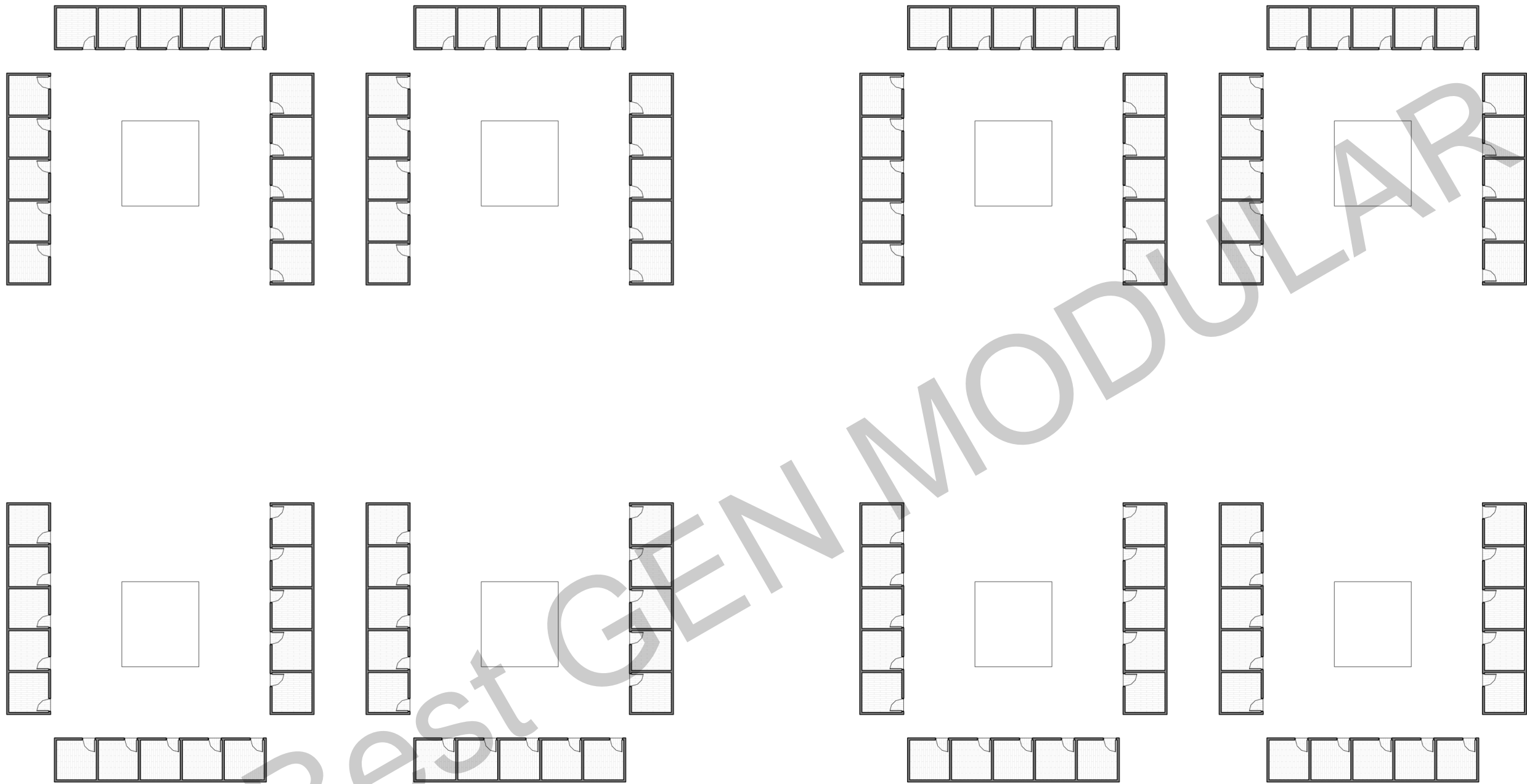
## About Best GEN Modular, Inc.

Best GEN Modular, headquartered in Rapid City, SD, acquired the Superior Building Systems factories in 2019. The factories were rebranded as Best GEN on January 1, 2020. We've been manufacturing for 60+ years. In 2014 we transitioned from manufacturing modular homes to manufacturing commercial modular structures; such as hotels, apartments, student housing, and senior living facilities. We have manufactured complete hotels for all the major chains; including Marriott, IHG, and Choice. The rooms are 100% finished in our factory and all the FF&E; such as beds, tables, chairs, artwork, etc. are installed inside the room prior to shipping them to their destination. This saves the owner/developer an incredible amount of time and hassle. Our modular structures can reduce the building completion time up to 50%; saving construction loan costs and adding several months of revenue.





# SITE PLAN



1 SITE PLAN  
1" = 30'-0"