

BUILDING SUCCESS

Strategies for Effectively Advancing Your Governor's Education Priorities

June 12, 2019



EducationCounsel
Policy | Strategy | Law | Advocacy

Webinar Overview

1

Opportunities to Advance
Education Policies &
Priorities

2

Overview of NGA Support
for GEPAs

3

State Trends in Education
Policy Priorities

4

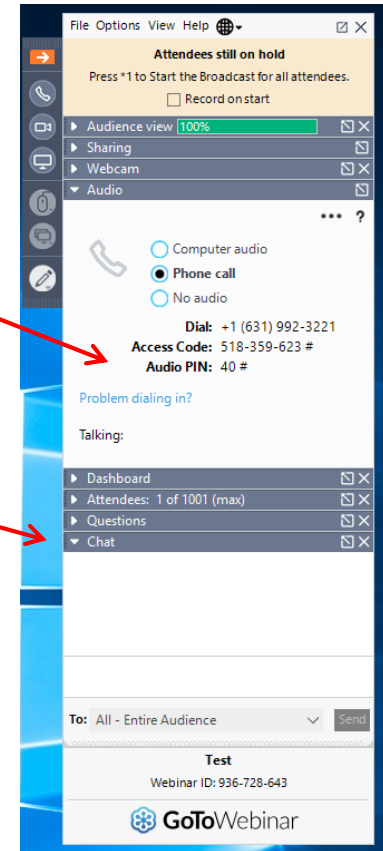
A Conversation with
GEPAs

5

Q & A

Webinar Logistics and Reminders

- Please make sure you have entered your audio pin. This will allow you to participate in the question and answer portion.
- If you are having technical difficulties at any point during the webinar, please send us a message through the chat box, located at the bottom right of the control panel.
- Thank you in advance for muting yourself when you are not speaking, in order to minimize background noise.



Panelists



Scott Palmer
Managing Partner
& Co-Founder,
EducationCounsel



Lindsay Dworkin
Director of Policy Development
& State Government Relations,
Alliance for Excellent Education
*Former GEPA to Delaware
Governor Jack Markell*



Jon Alfuth
Policy Analyst,
Education Division,
National Governors
Association



Nick Moore
GEPA to Alabama
Governor Kay Ivey

10 Opportunities for Governors to Advance Education Policies & Priorities

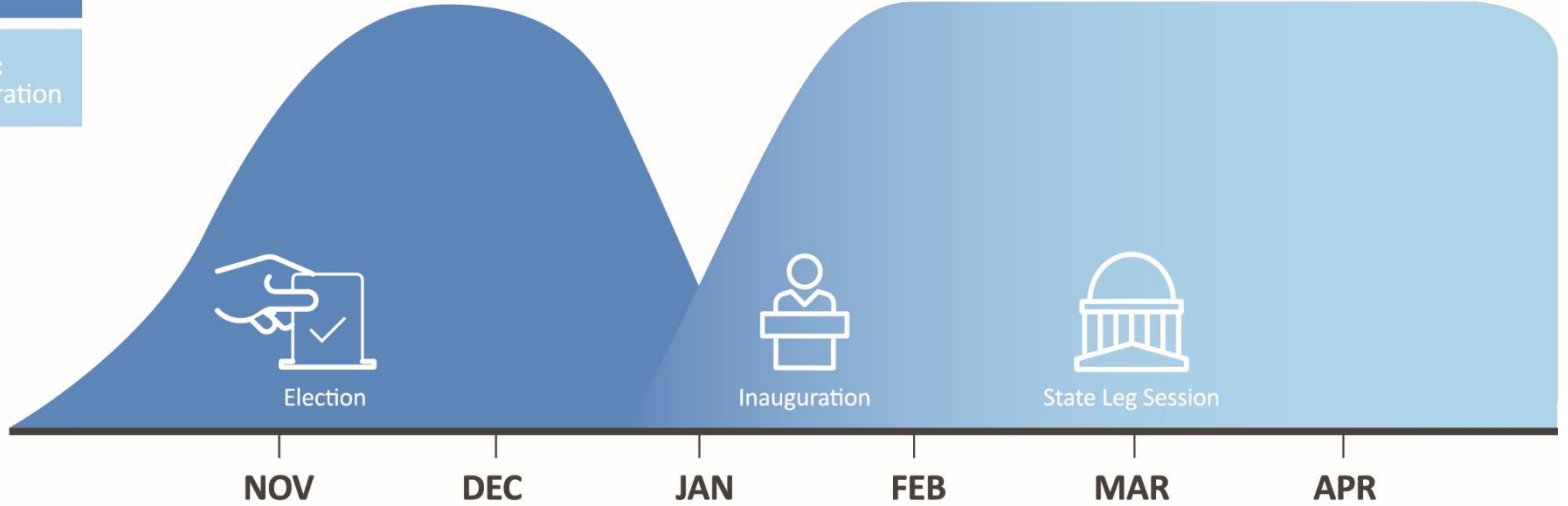
Context

- Education is at an inflection point providing an opportunity for state leadership.
- Transitions create opportunities & risks
- It doesn't end at transition

THE LIFECYCLE OF STATE EDUCATION LEADERSHIP TRANSITIONS

PHASE 1:
Transition Team

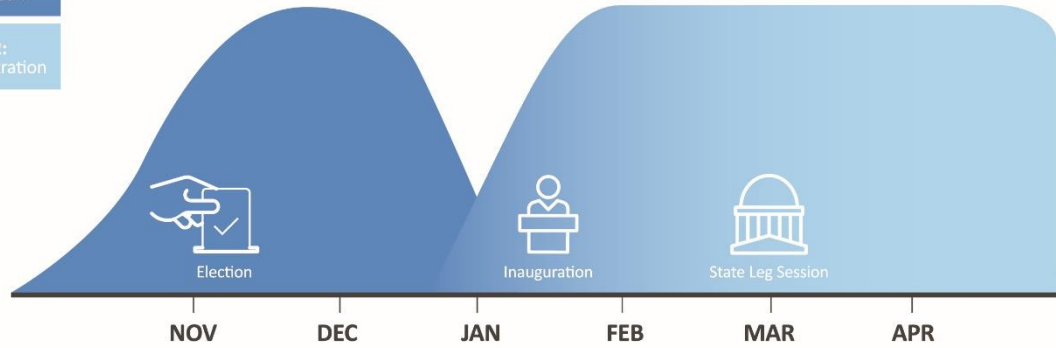
PHASE 2:
New Administration



PHASE 1:
Transition Team

PHASE 2:
New Administration

THE LIFECYCLE OF STATE EDUCATION LEADERSHIP TRANSITIONS



1. Establish education as a clear priority
2. Set initial vision for education
3. Appoint key state education leaders and staff
4. Engage key stakeholders
5. Analyze state context in education and more broadly
6. Examine state education agencies and program implementation
7. Review education research and lessons from the field
8. Identify and develop initial education policy priorities
9. Identify key partners and resources
10. Leave room and plan for continuous improvement

10 Opportunities for Action

1. Establish education as a clear priority



2. Set initial vision for education



3. Appoint key state education leaders and staff



4. Engage key stakeholders



5. Analyze state context in education and more broadly



6. Examine state education agencies and program implementation



7. Review education research and lessons from the field



8. Identify and develop initial education policy priorities



9. Identify key partners and resources

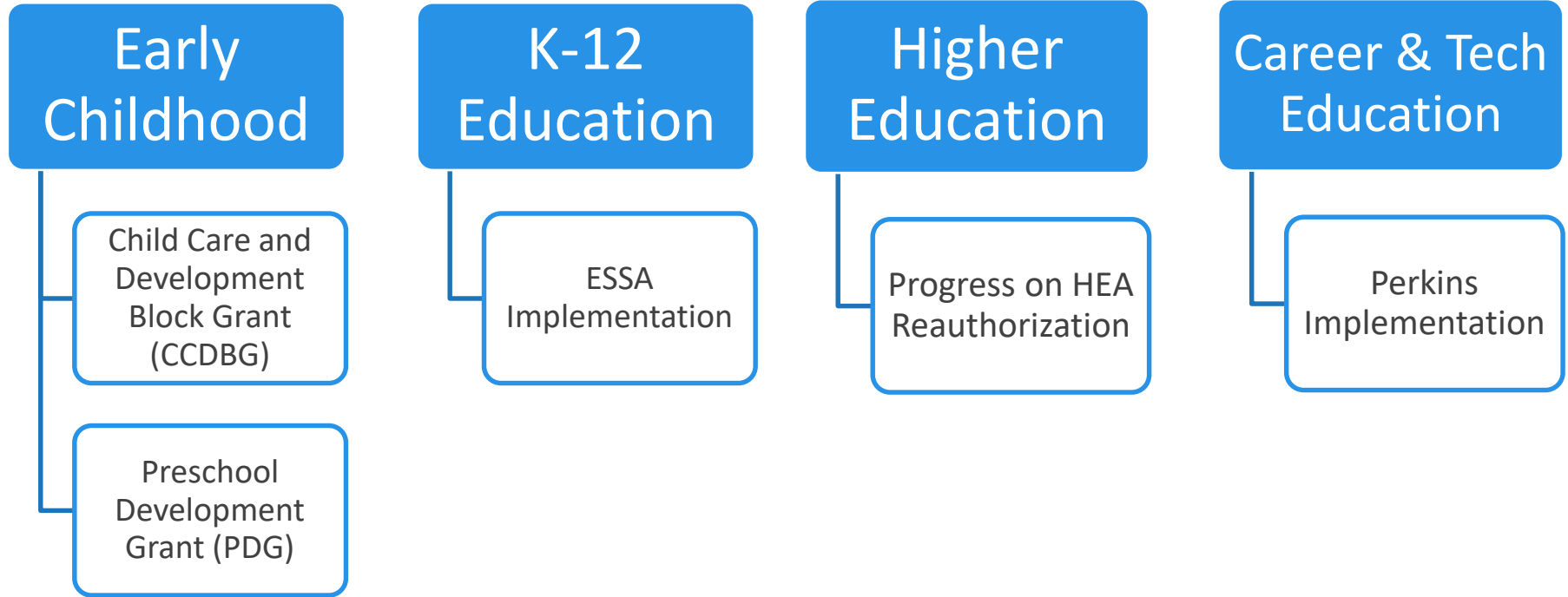


10. Leave room and plan for continuous improvement

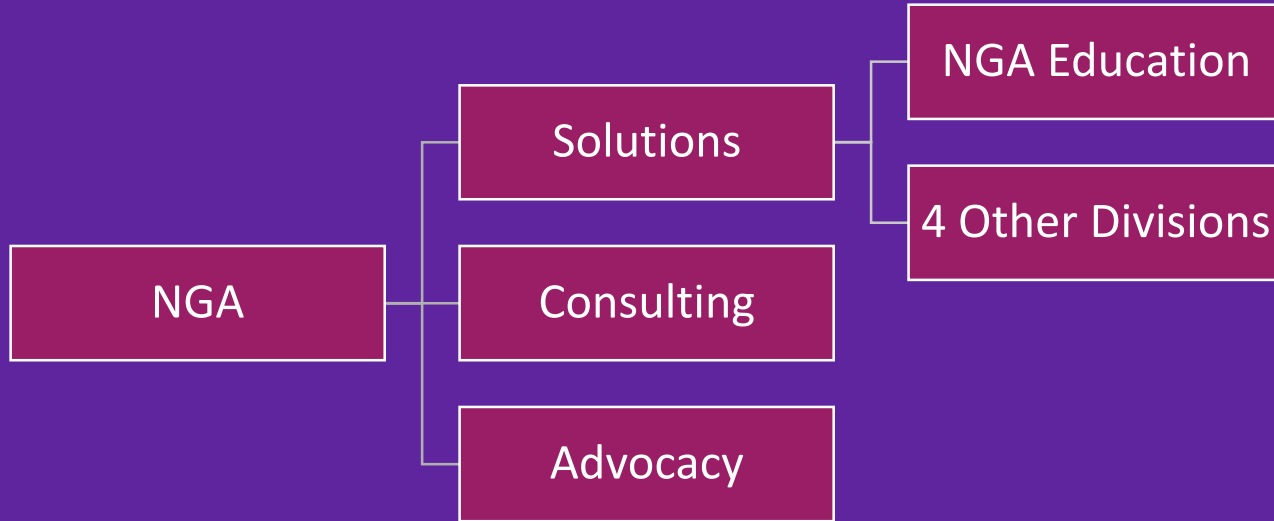


Federal Context and Update

Federal Context and Update



NGA Overview - How Education Fits In



NGA Education Team



Beth Caron
Interim Division Director

Oversees all NGA
Education projects
Focus area: Early Care
and Education

bcaron@nga.org
202-624-5332



Seth Gerson
Program Director

Focus areas: K-12-
Charter Schools, Human
Capital Development,
Social Emotional
Learning

sgerson@nga.org
202-719-2875



Mandy Sorge
Senior Policy Analyst

Focus areas: Early Care
and Education

msorge@nga.org
202-624-5486



April Mellion
Project Coordinator

Focus areas: Grants
Management and
Reporting

amellion@nga.org
202-624-7801



Tiffany Ferrette
Program Assistant

Focus areas: Early Care
and Education, School
Safety and Prevention

tferrette@nga.org
202-624-5496



Jon Alfuth
Policy Analyst

Focus areas: Governors
Education Policy Profiles,
Postsecondary Education

jalfuth@nga.org
202-624-5394



Alyssa Thibodeau
Program Assistant

Focus areas: K-12-
Charter Schools, Human
Capital Development,
Social Emotional
Learning

athibodeau@nga.org
202-624-5319

NGA Education: What We Do

- Governors Response Team
- Technical Assistance
- Ongoing Learning Opportunities
- Convenings

NGA Education: 2019 Work Areas



Human Capital

- Early Care and Education Workforce
- Human Capital Policy Playbook
- School Leadership



Whole Child

- Social Emotional Learning
- School Safety and Prevention (in collaboration with NGA Health and NGA Homeland Security and Public Safety)



Standards, Assessment and Accountability

- Work-based Learning (in collaboration with NGA Economic Opportunity)



Governance and Finance

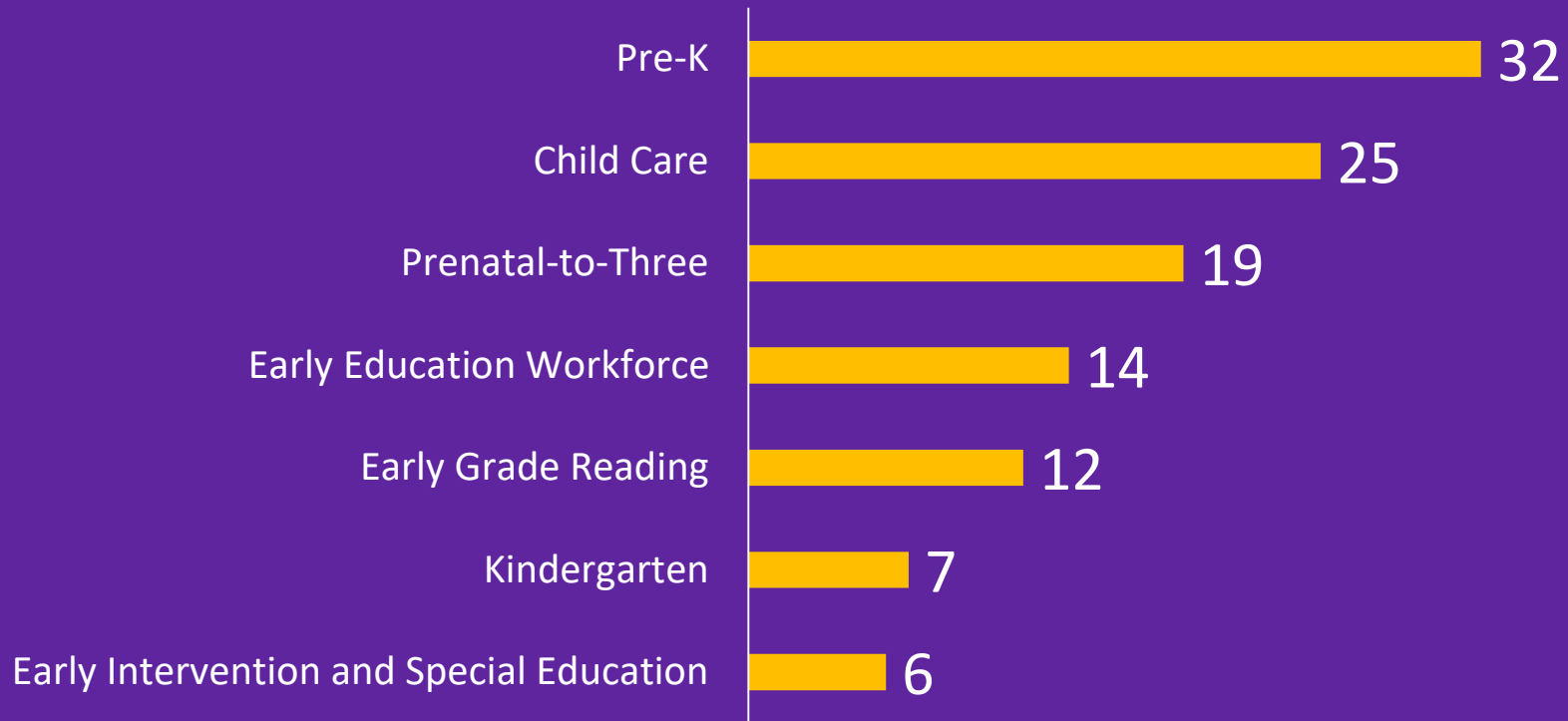
- Gubernatorial Education Policy Profiles
- Pre-K to Third Grade System Alignment
- Prenatal to Age Three Policies



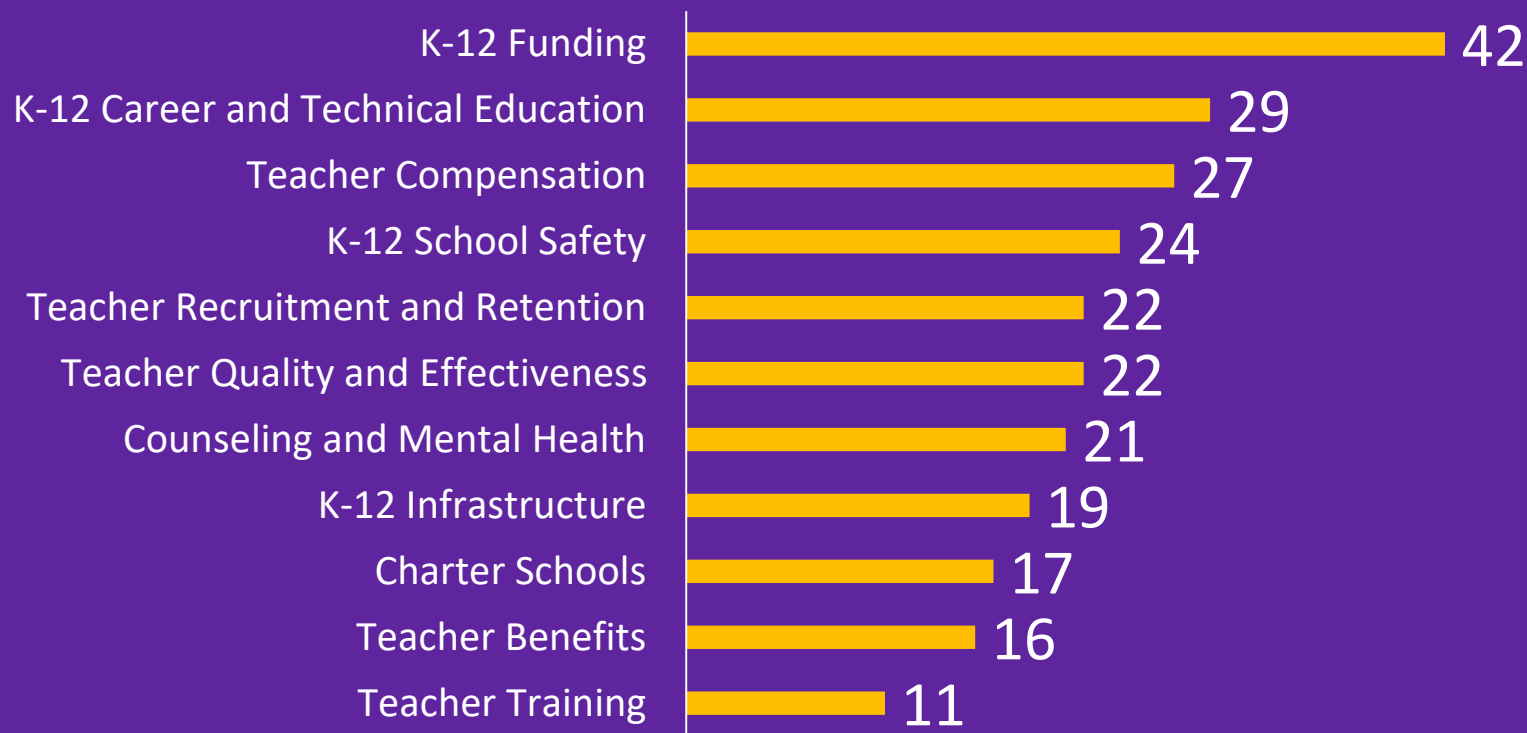
Personalized Education

- Charter Schools

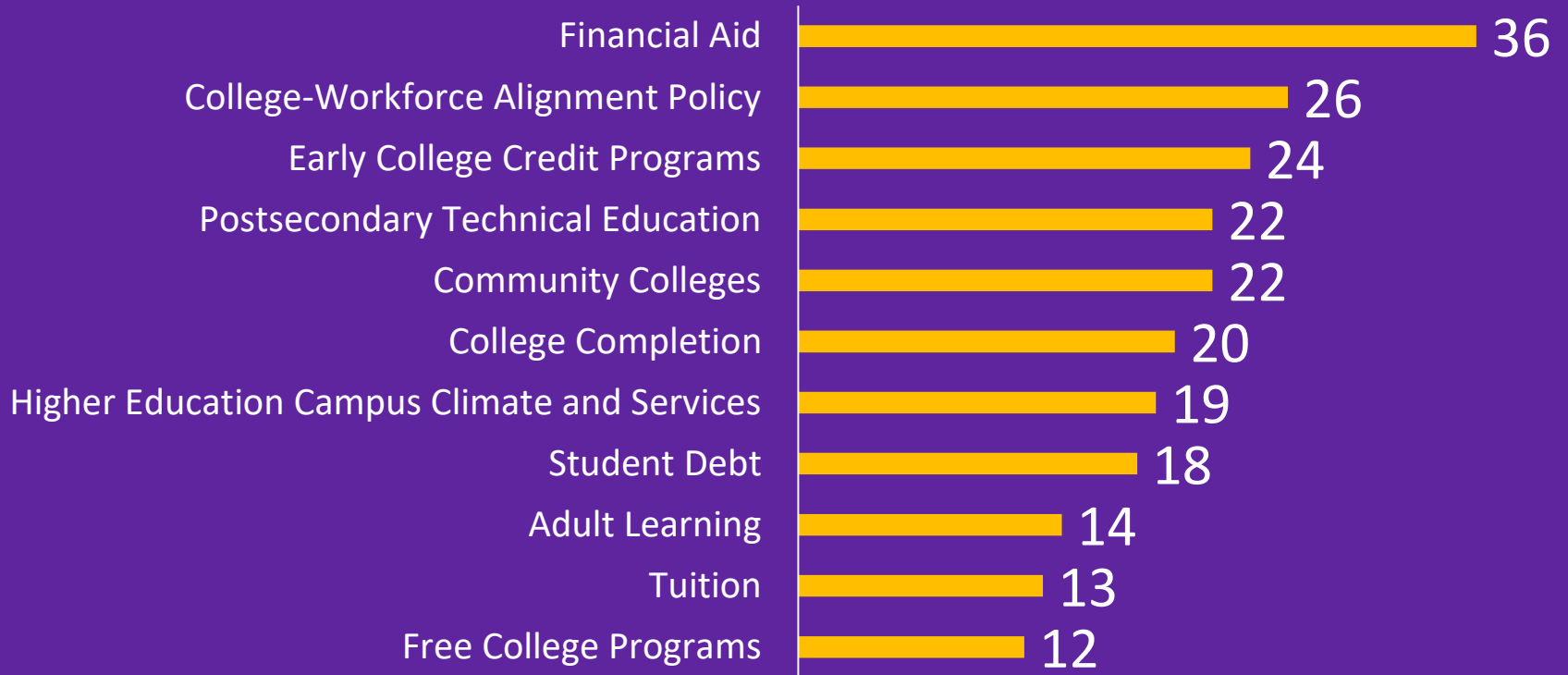
Early Education - Governors Mentioning in 2019



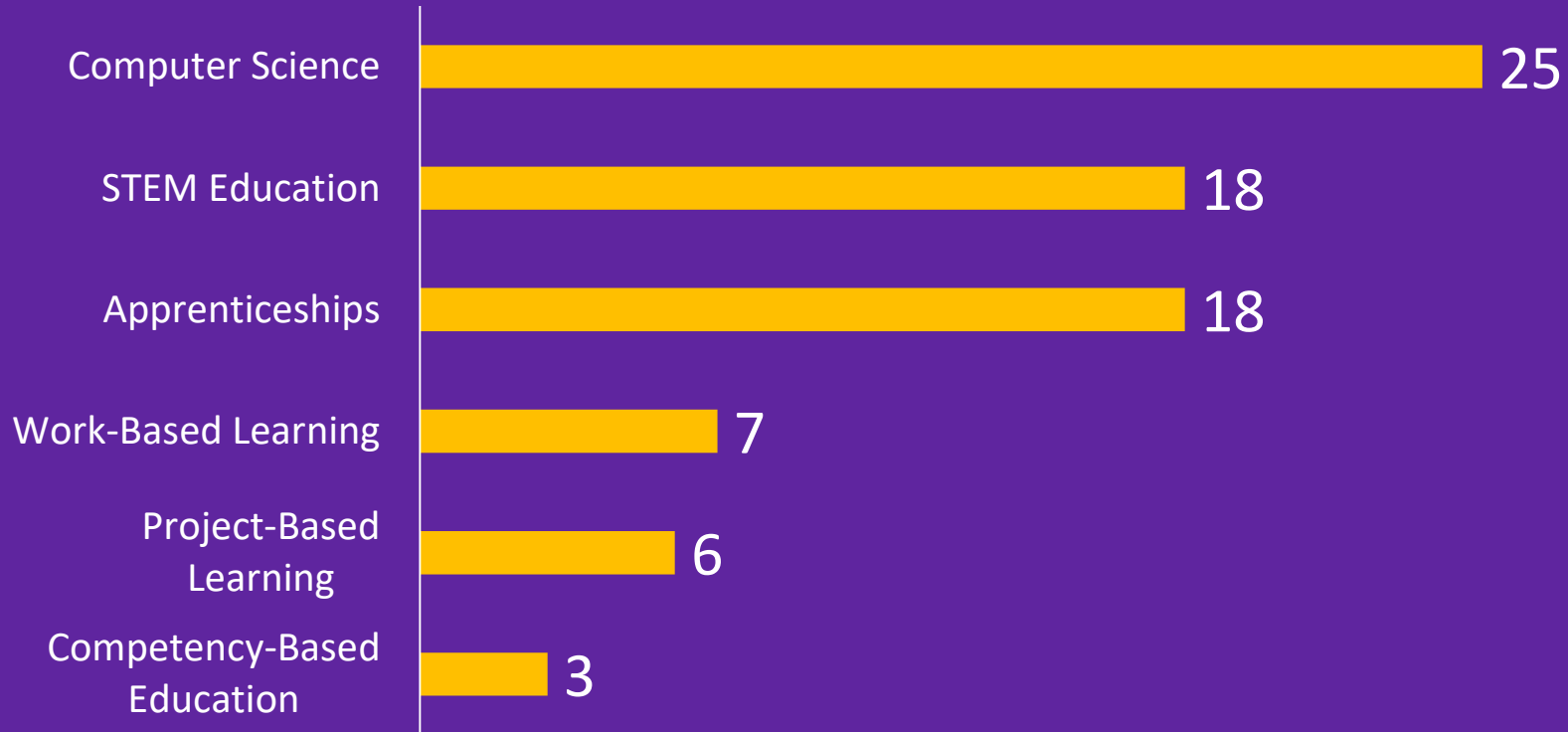
K-12 Education - Governors Mentioning in 2019



Postsecondary Education - Governors Mentioning in 2019



Workforce Education - Governors Mentioning in 2019



Experienced Discussion and Q&A



Lindsay Dworkin

Director of Policy Development & State
Government Relations,
Alliance for Excellent Education
*Former GEPA to Delaware Governor Jack
Markell*



Nick Moore

GEPA to Alabama
Governor Kay Ivey