

DEVELOPING A REGIONAL APPROACH FOR COST EFFECTIVENESS

New Jersey Stormwater Utility
Virtual In-State Retreat



September 17, 2020



Speakers and Moderator



PAM SHELLENBERGER

- Chief, Long Range Planning
York County Planning Commission
- Administrator, York County Stormwater Consortium
- Contact: 717-771-9870, x1768, pshellenberger@ycpc.org



FERNANDO PASQUEL

- Senior Vice President, Arcadis
- National Director, Stormwater and Watershed Management
- Chair, WEF Stormwater Institute Advisory Committee
- Contact: 703-842-5621, fernando.pasquel@arcadis.com



BEVIN BUCHHEISTER

- Senior Policy Analyst,
National Governors Association
- Contact: 202-595-2681 , bbuchheister@nga.org

PRESENTATION OUTLINE



Benefits of Regional Cooperation



Approach and Considerations



Case Studies



Q & A

Why is a Regional Approach Needed?

560 jurisdictions with similar stormwater requirements

Lack of funding for addressing stormwater needs

Economies of scale for SWU implementation

Stormwater problems do not follow municipal boundaries

Cost sharing of compliance and project costs

It works for other sectors (Water, Sewer, Electricity)

Benefits of Regional Cooperation

Improve acceptance
by having a uniform
stormwater funding
approach and
policies

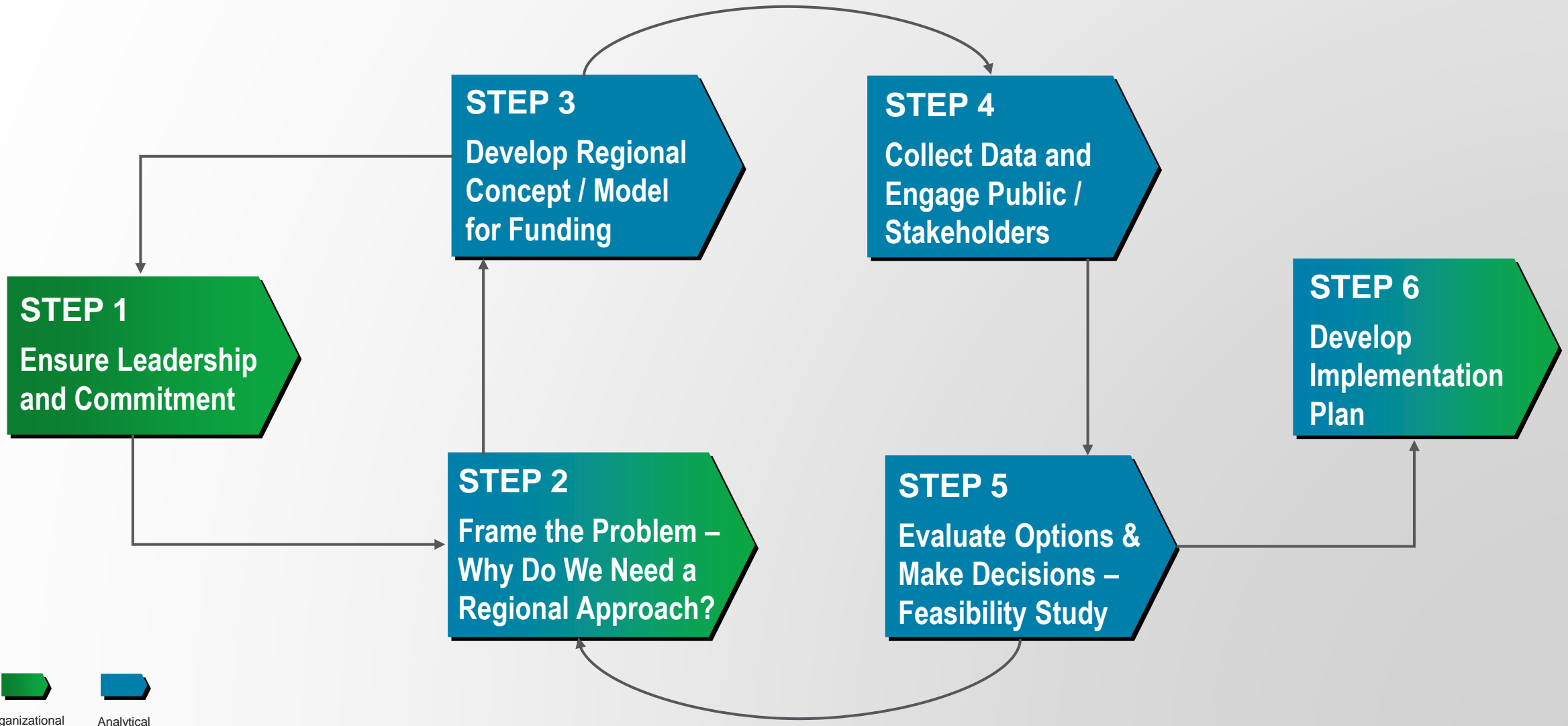
Create opportunities
for developing
watershed solutions
and reduce project
costs

Leverage existing
cooperation and
regional agreements

Streamline program
implementation to
reduce regulatory
compliance and O&M
costs

Increase access to
grants and innovative
funding sources

Regional Approach Decision Process



Implementation Considerations

- Scale and levels of participation
- Regulatory agency interaction
- Leadership and roles - Governance
- Services to be provided
 - At regional level
 - At municipal level
- Elected officials buy-in
- Funding strategy
 - Sources – diversify and leverage
 - Performance metrics



Policy Considerations



- Which communities participate in regional study?

- How would the regional utility impact local organization and staffing?

- How are funds going to be collected (billing) and distributed?

- Who implements the projects and O&M activities – regional and local roles?

- How do we maintain uniformity in rates and policies?

- Who is accountable and responsible for compliance and reporting of regional operations?

Albany Pool Communities, NY

Overview of Feasibility Study Project

Regional Stormwater In-Lieu Fee and Credit Banking Programs

Task 1: Data Collection and Review

Compile background information on Albany Pool Communities (APCs) stormwater programs

Task 2: Regulatory Authority and Governance

Identify regulatory and legal factors in to be considered in developing an organizational structure that supports regional funding

Task 3: Research ILF and Credit Banking Programs

Compile information from other established ILF and Credit Banking programs

Task 4: ILF and Credit Banking Concept Workshop

Discuss merits, pitfalls, lessons learned and overall applicability to Albany Pool Communities

Task 5: Feasibility Assessment and Report

Presentation of findings and the assessment of the feasibility for the Albany Pool Communities

Feasibility Study Findings

1. Regional approaches are growing in popularity as a way to enhance the cost effectiveness of stormwater management
2. A limited number of programs have been implemented mostly by larger municipalities. Municipalities had flexibility to meet onsite requirements with offsite mitigation.
3. Advantages:
 - Flexibility to achieve stormwater compliance through either offsite or onsite options.
 - Ability to drive compliance measures to priority areas
4. Challenges or Limitations
 - Scale needed for viable credit banking/trading program
 - Eligibility across watershed boundaries
 - Program implementation and administration cost

Options Considered for the APCs

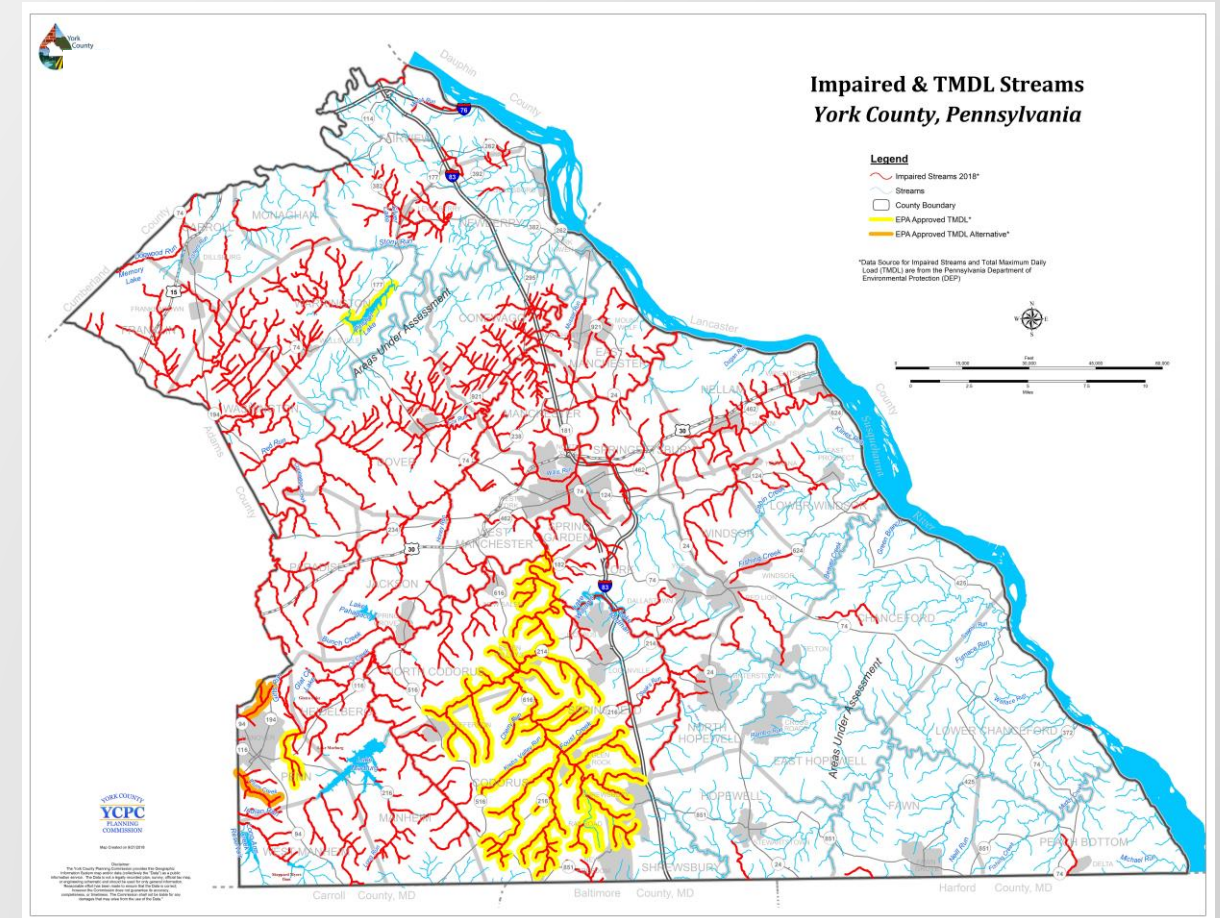
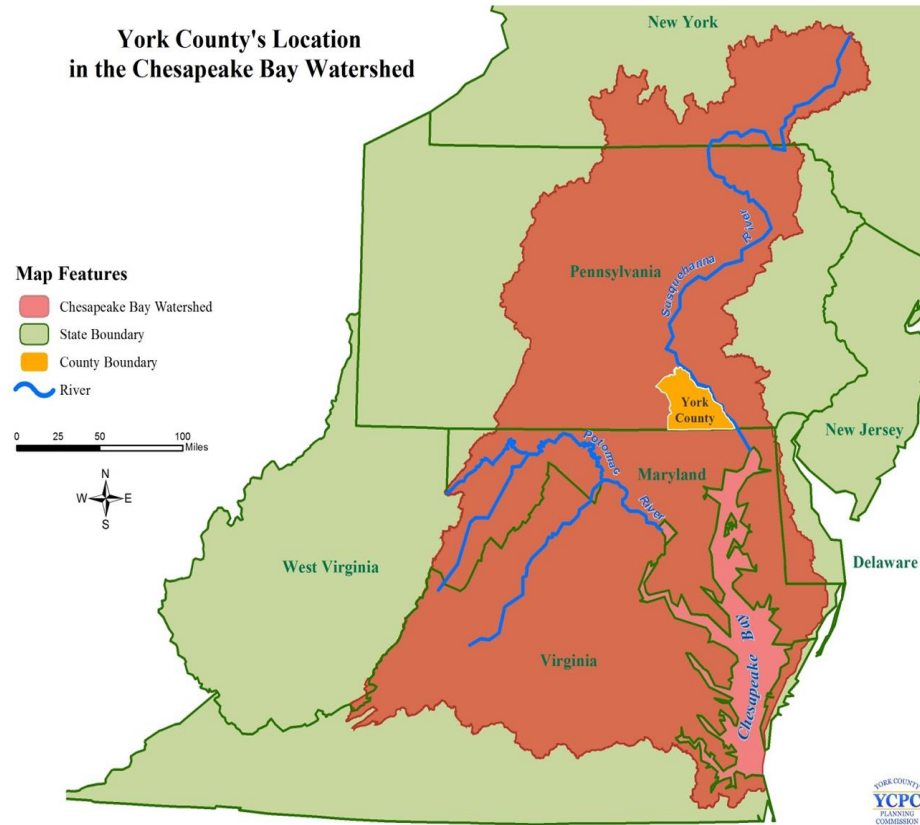
- Establish only in-lieu fee program
- Establish both in-lieu fees and credit banking / trading programs
- Implement planning and administration separately
- Implement planning regionally, but administer programs separately
- Implement planning and administration regionally

Sample Potential Program Suitability

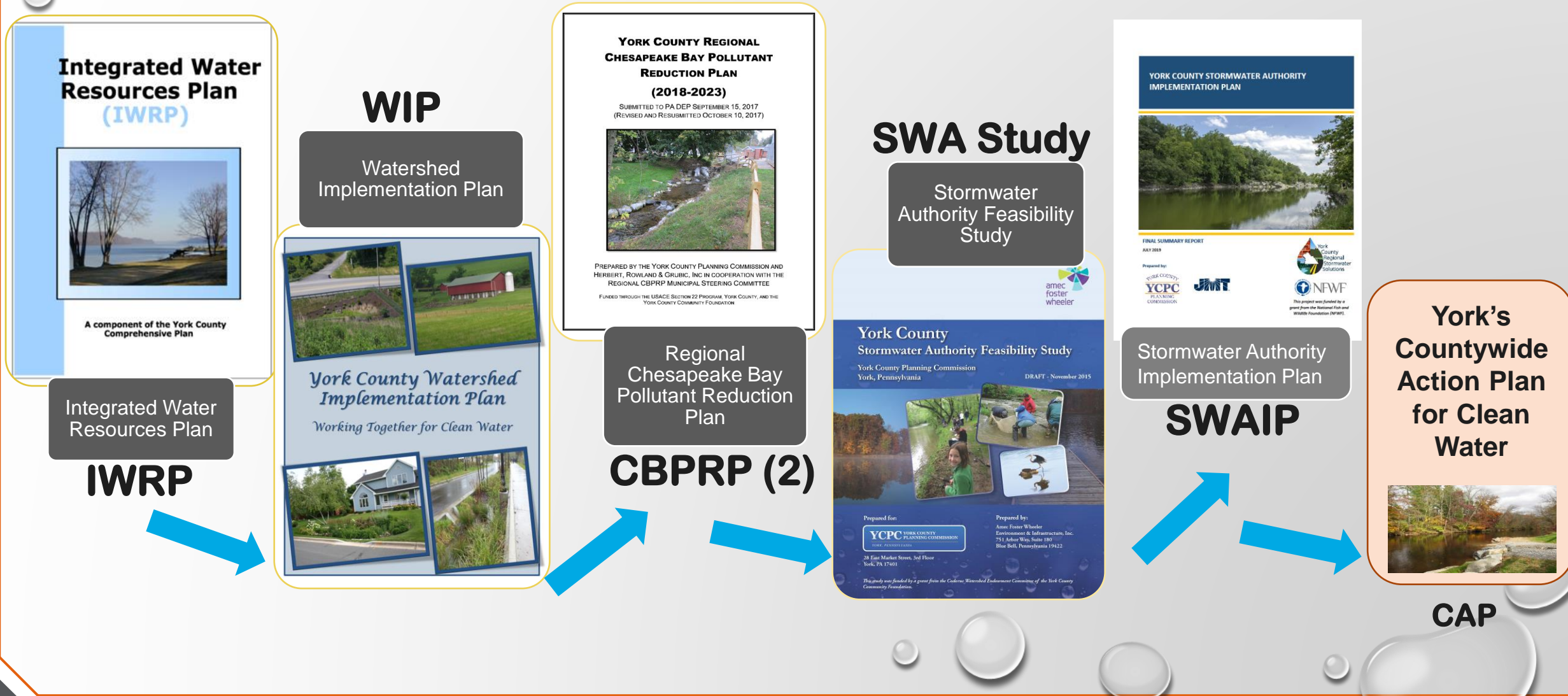
Community	In-Lieu Fees	Credit Banking
City of Albany		
City of Cohoes		
City of Rensselaer		
City of Troy		
City of Watervliet		
Village of Green Island		

York County, PA

Location in the Chesapeake Bay Watershed



York County's Journey to Improve Water Quality



York County Regional CBPRP

**YORK COUNTY REGIONAL
CHESAPEAKE BAY POLLUTANT
REDUCTION PLAN
(2018-2023)**

SUBMITTED TO PA DEP SEPTEMBER 15, 2017
(REVISED AND RESUBMITTED OCTOBER 10, 2017)



PREPARED BY THE YORK COUNTY PLANNING COMMISSION AND
HERBERT, ROWLAND & GRUBIC, INC IN COOPERATION WITH THE
REGIONAL CBPRP MUNICIPAL STEERING COMMITTEE

FUNDED THROUGH THE USACE SECTION 22 PROGRAM, YORK COUNTY, AND THE
YORK COUNTY COMMUNITY FOUNDATION

- Requirement for MS4 Permit holders
- Pollutant reduction goal is 6.5m lbs/sediment/year
- Implemented through an Intergovernmental Cooperation Agreement
- 45 participants together will contribute \$12.8 million over 5 years
- Committed for 5 years (through December 2023)



YCSWC REGIONAL CBPRP BENEFITS

- No cost to municipalities for Plan development
- Participation by DEP throughout Plan development
- Cost efficient for MS4 municipalities & other participants
- Municipalities get credit for pollutant reductions regardless of where project located in the planning area
- Projects located in 4 primary watersheds; not each huc-12 level watershed
- Implement more efficient and effective BMP's
- Priority for grant funding
- Partnership with non-municipal MS4's



YCSWC REGIONAL CBPRP LESSONS LEARNED

- Important to approach DEP with specific requests and justify why the “ask” is essential
- Obtain/Maintain documentation of DEP responses in writing
- Municipalities need to clearly understand their role in Plan implementation
- YCSWC funds are municipal monies, therefore municipal procurement process required
- Public/Private Partnerships can help reduce the municipal financial burden
- Importance of water quality monitoring
- MS4 municipalities struggling to meet the escalating costs of regulatory compliance; SWA options being considered





Ingredients for Success

Lead
Agency
with
Dedicated
Staff

Engage
EPA
&
DEP

Cost
Savings

Regulatory
Consideration

Public Private
Partnerships
&
Patience,
Persistence,
Professional
help



Conclusions



A regional approach to planning and funding improves acceptance and can reduce costs



Use lessons learned from other areas and build on regional cooperation to improve your chances of success



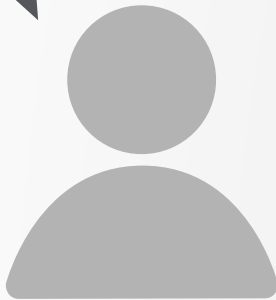
Implementation success: share program vision, obtain leadership and stakeholder buy-in, define benefits and risks



New Jersey has good enabling legislation and stormwater problems are understood, but funding remains a challenge

Q & A

**YOUR COMMENTS
OR QUESTIONS
ON THE
REGIONAL
APPROACH:**



- Concerns with the regional approach?
- Do you have examples of existing regional cooperation – activities, drivers, etc.?
- Other?

THANK YOU!

PAM SHELLENBERGER

717-771-9870, ext. 1768
pshellenberger@ycpc.org

BEVIN BUCHHEISTER

202-595-2681 ,
bbuchheister@nga.org

FERNANDO PASQUEL

703-842-5621
fernando.pasquel@arcadis.com