



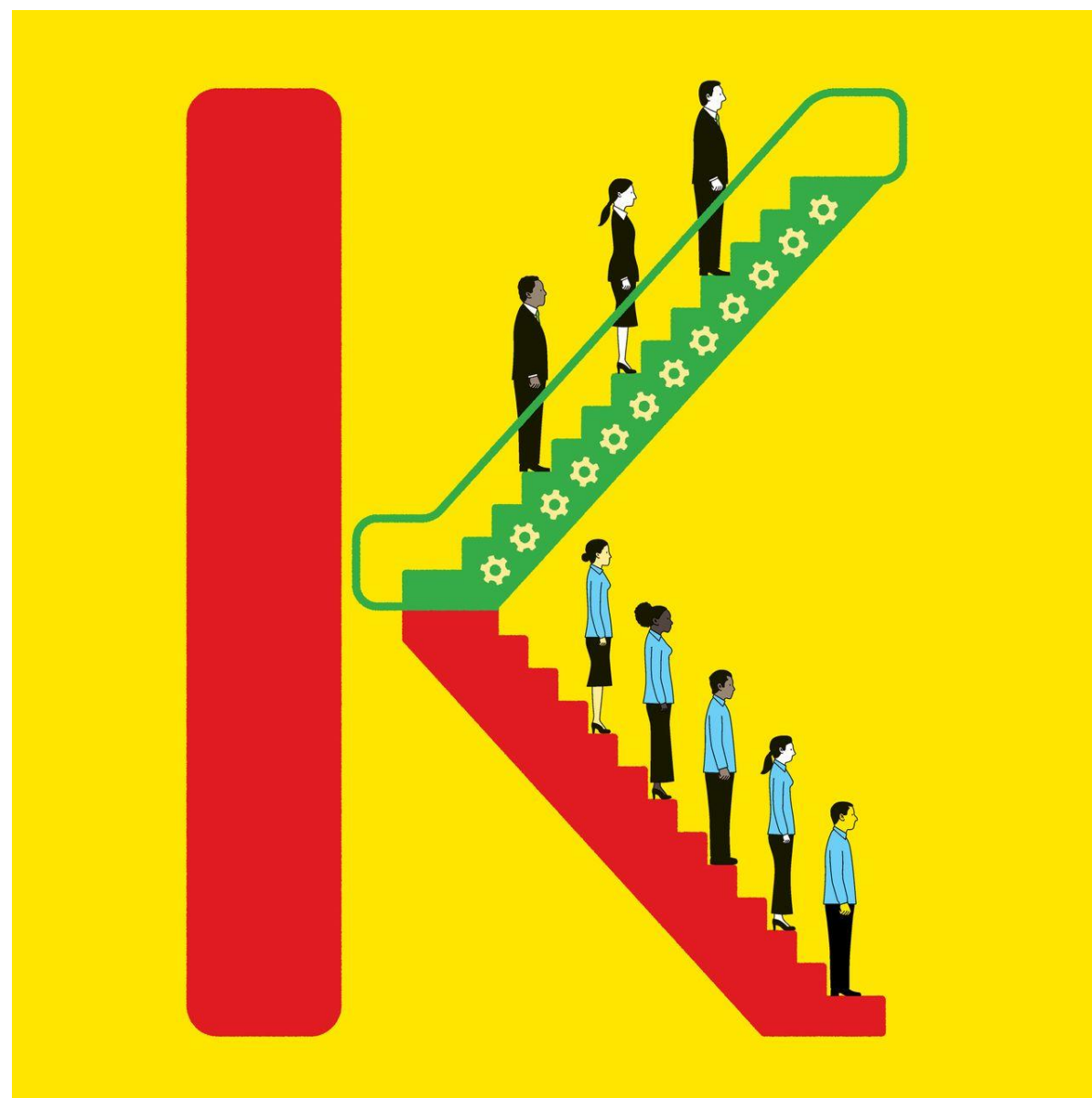
AI-Powered GPS for Career Transitions

AI-Powered Workforce Development

COVID-19 has accelerated inequality & the urgent need for support in reskilling & re-entering the workforce

The Risk of a “K-Shaped” COVID-19 Economic Recovery

*Economists are warning of a recovery with **uneven benefits** to different groups that could further **exacerbate income disparities***



Urgent Need for Reskilling & Re-Entering the Workforce

50 Million Americans lost their jobs due to the COVID-19-induced recession

While jobs are back for the highest wage earners, **fewer than 50% of jobs** lost have returned for those making less than \$20/hr

40% of companies are increasing their adoption of automation during the recovery, further displacing workers

Even before COVID-19, it was estimated that **54% of people** will need to reskill by 2030

FutureFit AI is uniquely positioned to support workers by providing an **AI-Powered Career GPS** that is...



Intelligent

One of **most comprehensive AI-powered data maps of the Future of Work**:

- 350M+ global talent profiles
- Live labor market data and automation projections
- AI-powered career path recommendations

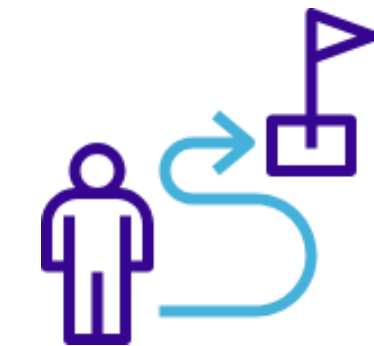


Flexible

A robust **learning program & career support marketplace**:

- AI recommends personalized roadmap given skills gap
- Individual is empowered with budget to choose which resources they would most value

One-size-fits-all solutions don't work.



Human

Human **coaching support until job placement** to drive successful outcomes:

- 1:1 coaching calls to understand needs and challenges
- Peer community to drive collective progress
- Unlimited chat and email support

FutureFit AI is Helping Reimagine Career Transitions

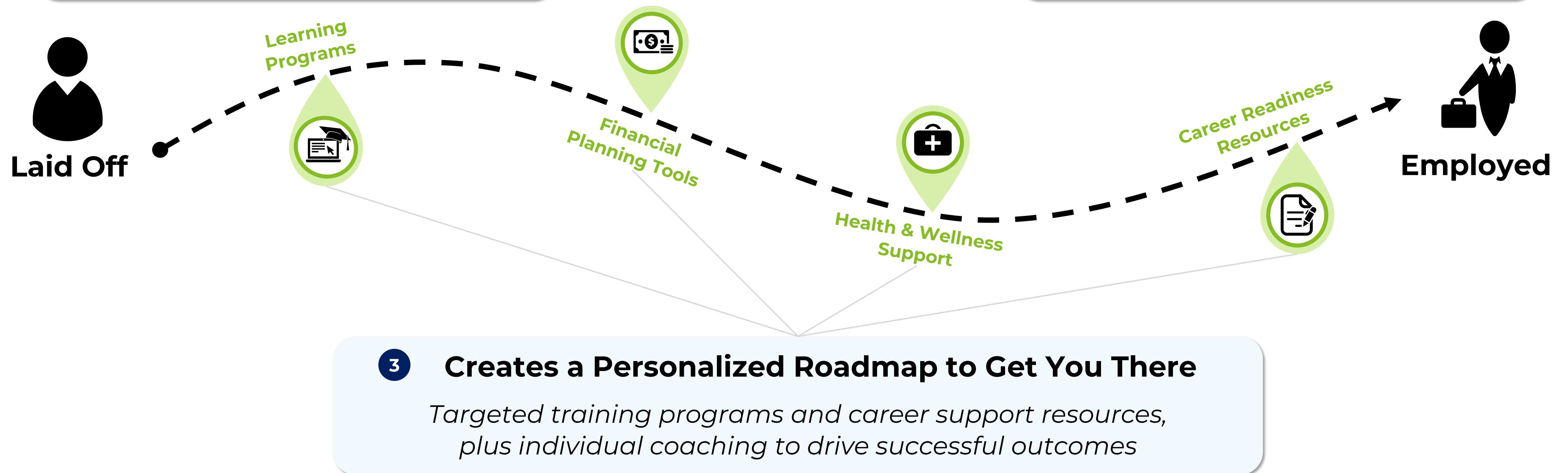
Imagine an AI-Powered Career GPS that...

1 'Locates' You

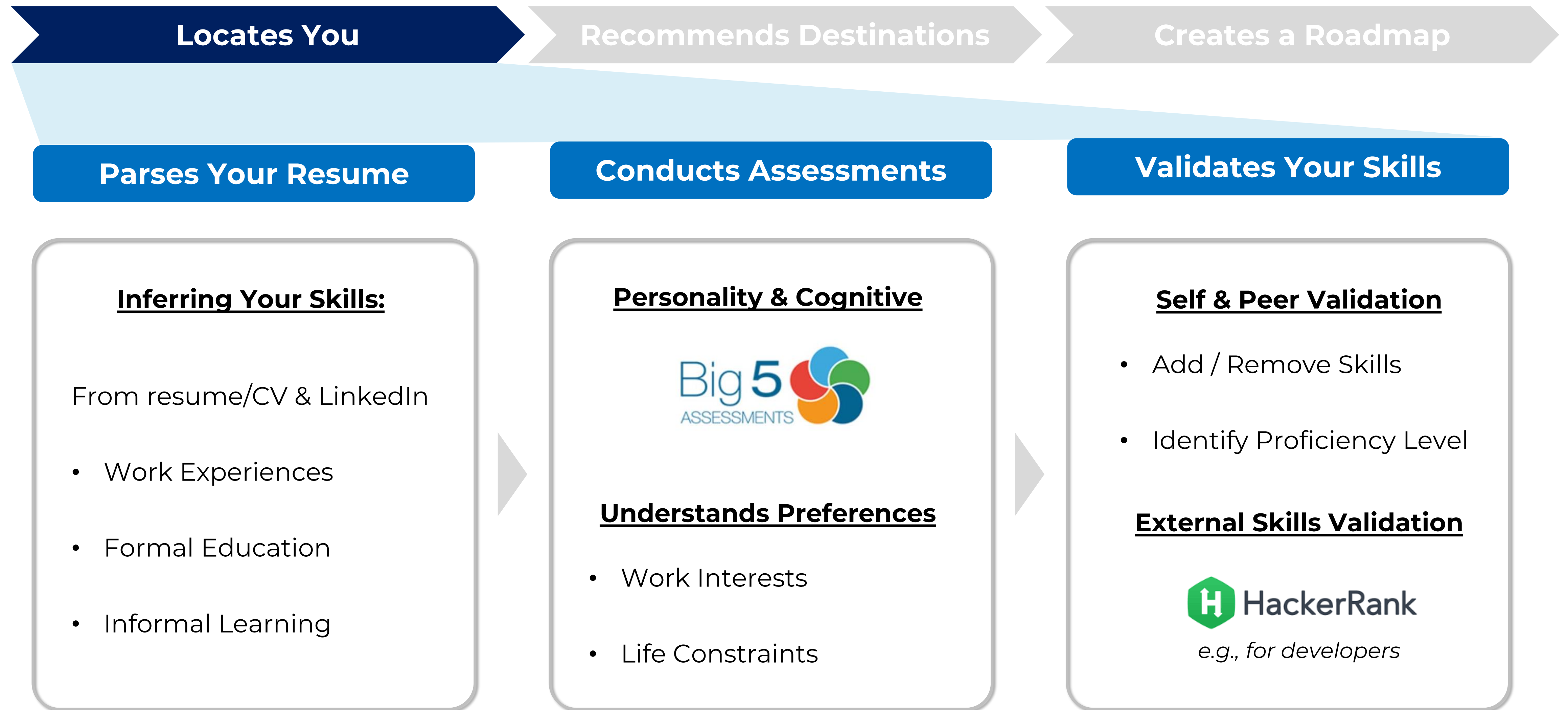
Resume Parsing and 360 Profiling Assessments to Identify Your Skills

2 Recommends 'Destinations'

Real Time Labor Market Data to Recommend Career Paths



1 A Career GPS that... 'Locates' You



2 A Career GPS that... Recommends ‘Destinations’



Based on Your Chosen Path

GROW IN YOUR CURRENT ROLE
Take steps to succeed in your current role by developing your skills.

TRANSITION TO A NEW JOB
Find new opportunities where you are

PURSUE A NEW CAREER
Start a new career in other industries or fields.

TRY SOMETHING DIFFERENT
From going back to school to becoming an entrepreneur, start your next chapter in something new.

I DON'T KNOW YET.
There's no rush! Take more time before defining your goals.

Evaluates Career Matches

Match Score based on 3 Core Dimensions

- A Desirability
- B Feasibility
- C Sustainability

Generates Possible Careers

WEB DESIGNER
\$65,000

INFORMATION TECHNOLOGY

82 JOBS 3-6 MONTHS 5 MISSING SKILLS

70% MATCH

FRONT-END DEVELOPER
\$45,000

INFORMATION TECHNOLOGY

72 JOBS 4-6 MONTHS 15 MISSING SKILLS

80% MATCH

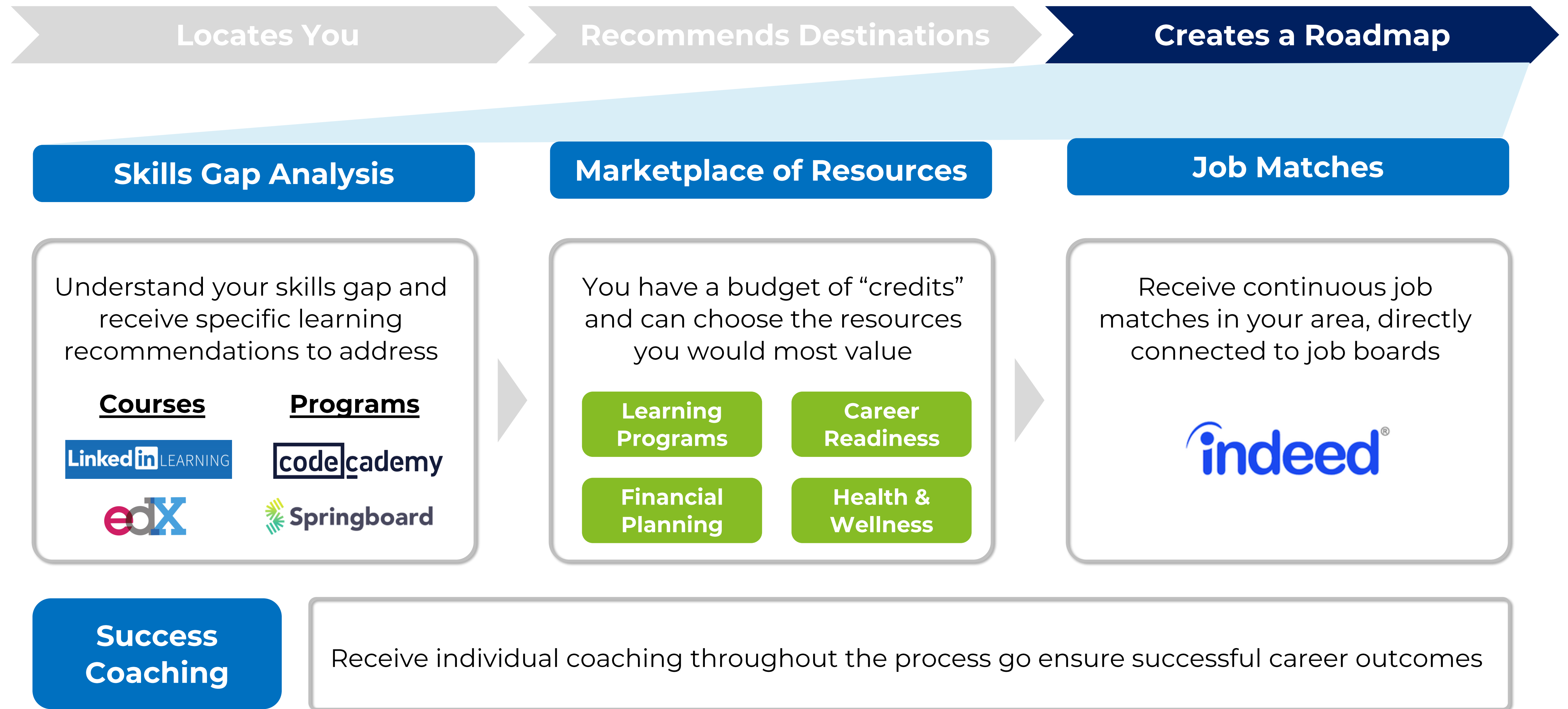
PRODUCT DESIGNER
\$85,000

INFORMATION TECHNOLOGY

32 JOBS 1-3 MONTHS 85 MISSING SKILLS

50% MATCH

3 A Career GPS that... Creates a Personalized Roadmap



FutureFit AI's model has a flexible structure to meet the needs of each economy and community

A Flexible in Budget Allocated

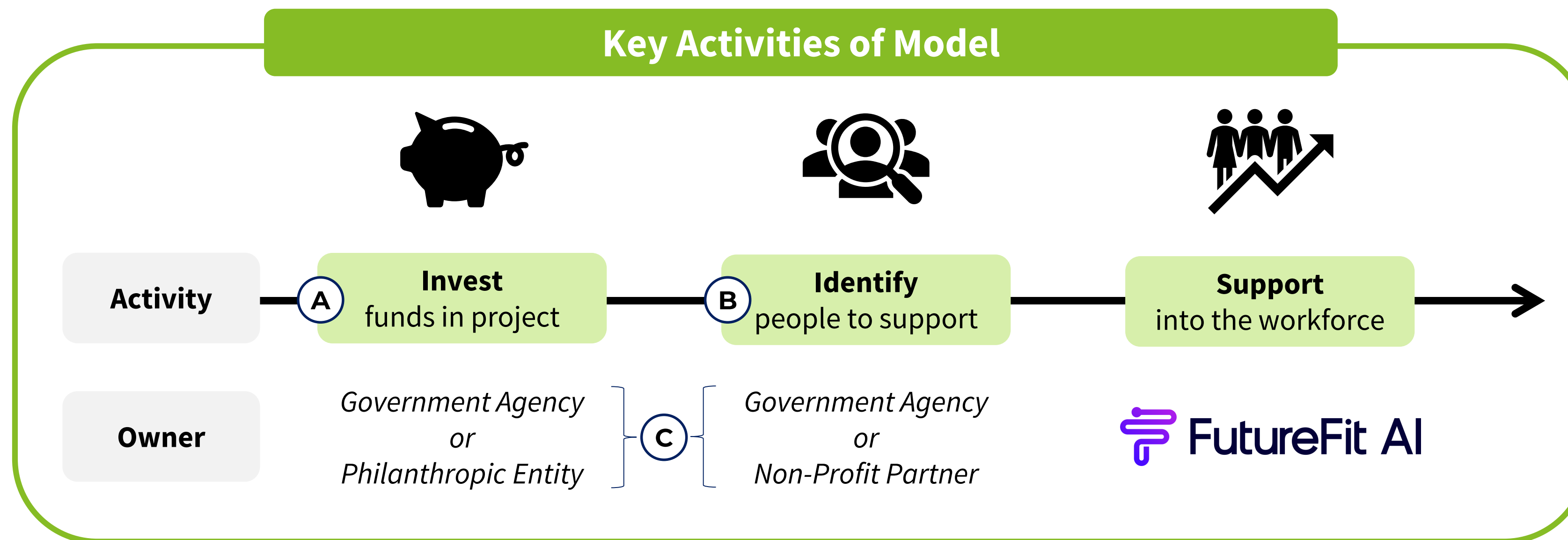
*Can customize support offering to align with the available budget to invest, including **amount of credits individuals can spend in vendor marketplace***

B Flexible in Target Population

*Can focus on general population of job seekers or on **specific segments (e.g., veterans, immigrants, people of color, etc.)** with targeted support and partners*

C Flexible in Stakeholders Involved

*Can engage multiple **public, private, or non-profit partners** in identifying and supporting members of target population to benefit from the platform*





AI-Powered GPS for Career Transitions

Inskilling | Reskilling | Outskilling

Contact – Taylor.Stockton@FutureFit.AI

Global Recognition

