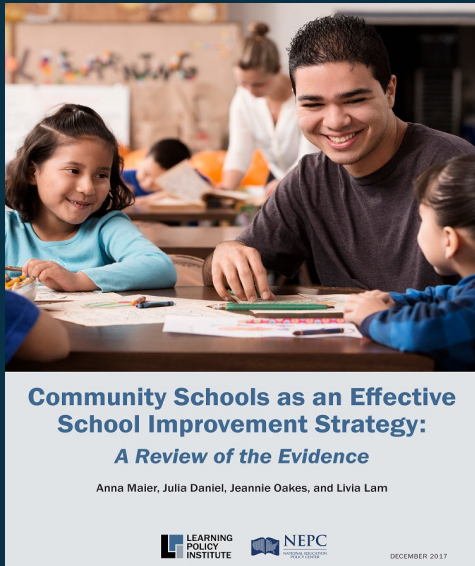
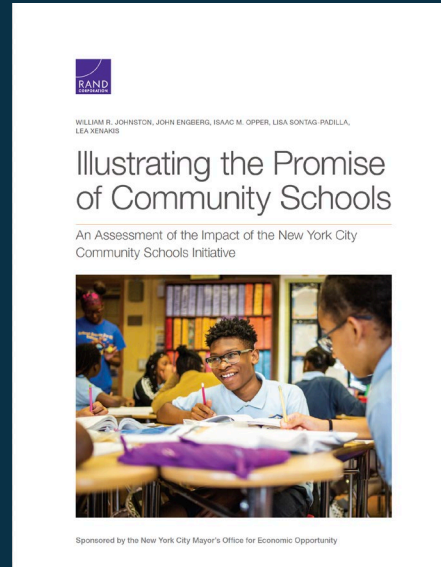


State Support for Community Schools

Community Schools Research



Reviewed 140+ studies of community schools and their associated features



Evaluated the implementation & outcomes of the NYC Community Schools Initiative

Research Findings

- ▶ Research review found benefits associated with community schools, including...
 - Increased academic achievement
 - Increased attendance
 - Higher graduation rates
 - Improved peer/adult relationships and attitudes toward school
 - Reduced racial and economic achievement gaps
- ▶ The RAND study confirmed many of these benefits in NYC
- ▶ Cost-benefit ratio of up to \$15 for every dollar invested

State Support for Community Schools

Illinois

- \$100M in ESSER funding to support competitive Community Partnership grants administered by IL SBE

New York

- School funding formula set aside for high-need districts (\$250M in FY 2022)
- 3 regional technical assistance centers

Vermont

- \$3.4M in ARPA funding to support community school pilot grants in small/rural districts

California

- \$4B investment in competitive state planning, implementation, & extension grants for all high-poverty schools (80% + FRPM) to become CS over 7 years
- 8 regional technical assistance centers with central hub

New Mexico

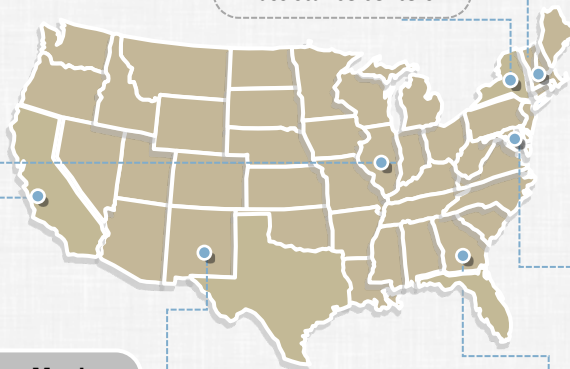
- \$8M investment in competitive planning and implementation grants
- Grantees include small/rural initiatives and tribal partnerships

Georgia

- Whole child/ community school certification process led by GA DOE Office of Whole Child Supports

Maryland

- School funding formula support for high-poverty schools (currently 70% + FRPM) through Concentration of Poverty entitlement grant
- Approx. \$250k annually for CS coordinator & healthcare worker, plus additional per-pupil funding for high-needs students



Blending & Braiding Funding

▶ **Federal resources** include:

- COVID relief funds (ESSER, ARPA)
- Full-Service Community Schools grant program (\$68M in FY 2022)
- Title I funds for low-income schools
- 21st Century Community Learning Center grants for afterschool programming
- ESSA Title IV-A Student Support and Academic Enrichment grants
- Statewide Family Engagement Centers
- Medicaid for school-based health services
- AmeriCorps staffing
- Funding in addition to USED: Health and Human Services (physical/mental health care), Labor (career training), Justice (mentoring), Agriculture (nutrition assistance), HUD (housing resources)

▶ **Plus state, local, and private/philanthropic resources**

- School districts can collaborate with city and county partners to support networks of community schools
- Private philanthropy, local business, and nonprofits/CBOs can partner
- States can offer TA/capacity-building to support these partnerships